

PŁYTKI PROWADZĄCE STALOWE SAMOSMARUJĄCE

SELF-LUBRICATING STEEL WEAR PLATES

PG35

Materiał / Material

CK45 + GRAFIT
CK45 + Graphite

Twardość / Hardness

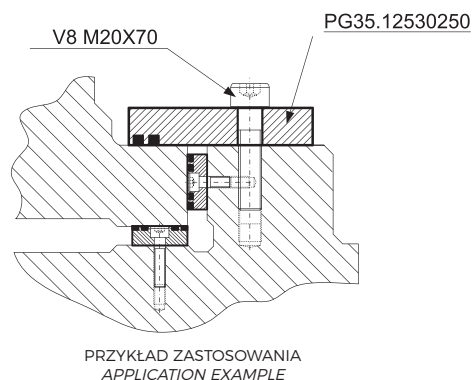
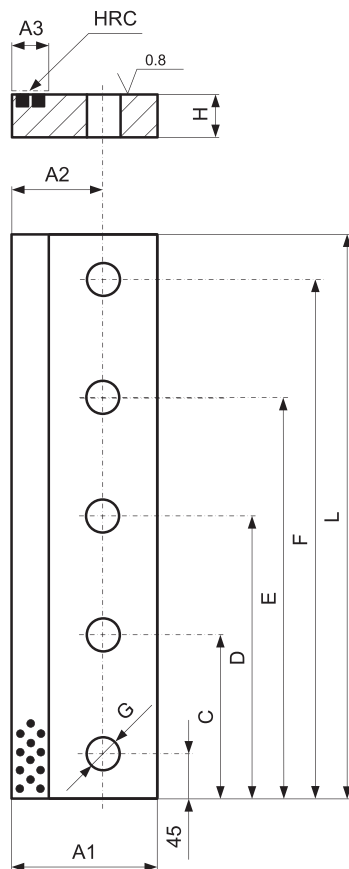
58 ± 60 HRC

Jak zamówić / How to order

Symbol: PG35.12530250

Inne wymiary na żądanie
Other dimensions on demand

Śruby V8 str. 445
Screws V8 page 445



Elementy prowadzące do tłoczników

Symbol	A1	A2	A3	L	H	C	D	E	F	G	ŚRUBY SCREWS
PG35.07525160	75	40	25	160	25	-	-	-	115	17	2x M16x60
PG35.07525200		40	25	200	25	-	-	-	155	17	2x M16x60
PG35.07525250		40	25	250	25	-	125	-	205	17	3x M16x60
PG35.10025160	100	60	30	160	25	-	-	-	115	17	2x M16x60
PG35.10025200		60	30	200	25	-	-	-	155	17	2x M16x60
PG35.10025250		60	30	250	25	-	125	-	205	17	3x M16x60
PG35.10025400	100	60	30	400	25	125	200	275	355	17	5x M16x60
PG35.10030160		60	30	160	30	-	-	-	115	21	2x M20x70
PG35.10030200		60	30	200	30	-	-	-	155	21	2x M20x70
PG35.10030250	100	60	30	250	30	-	125	-	205	21	3x M20x70
PG35.10030400		60	30	400	30	125	200	275	355	21	5x M20x70
PG35.12530160		125	75	30	160	30	-	-	-	115	21
PG35.12530200	75		30	200	30	-	-	-	155	21	2x M20x70
PG35.12530250	75		30	250	30	-	125	-	205	21	3x M20x70
PG35.12530400	75		30	400	30	125	200	275	355	21	5x M20x70