

ŁAPY DOCISKOWE ZĄBKOWANE

TOOTHED CLAMPS

NR 6314Z

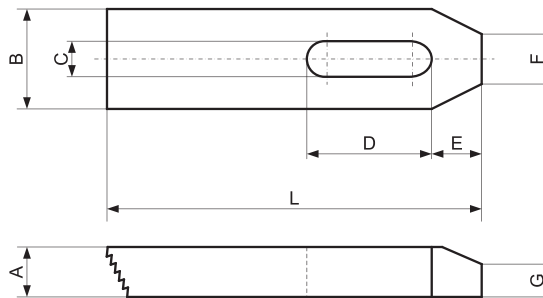
S220

Materiał / Material

Stal hartowana malowana
Hardened painted steel
R > 700N/mm²

Jak zamówić / How to order

Symbol: S220.18125



Symbol	A	B	L	C	D	E	F	G	ŚRUBA / SCREW	WAGA / WEIGHT (G)
S220.07050	10	20	50	7	20	10	8	6	6	55
S220.09060	12	25	60	9	22	13	10	8	8	125
S220.11080	15	30	80	11	30	15	12	10	10	205
S220.14100	20	40	100	14	40	21	14	12	12-14	445
S220.18125	25	50	125	18	45	26	18	15	16-18	930
S220.22160	30	60	160	22	60	30	22	18	20-22	1700
S220.26200	30	70	200	26	80	35	26	18	24	2500

ŁAPY DOCISKOWE Z REGULOWANĄ ŚRUBĄ PODPOROWĄ

ADJUSTABLE CLAMPS WITH METRIC STANDARD PITCH SCREW

NR 6314V

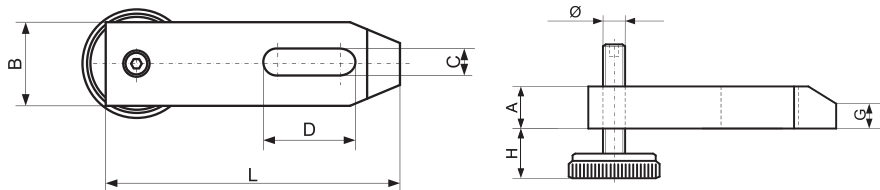
S230

Materiał / Material

Stal hartowana malowana
Hardened painted steel
R > 700N/mm²

Jak zamówić / How to order

Symbol: S230.18125

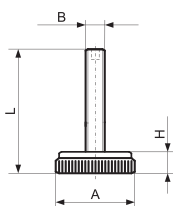


Symbol	A	B	L	H	C	D	Ø	G	ŚRUBA / SCREW	WAGA / WEIGHT (G)
S230.11080	15	30	80	15-45	11	30	M10	10	10	345
S230.14100	20	40	100	15-40	14	40	M12	12	12-14	680
S230.18125	25	50	125	15-45	18	45	M16	15	16-18	1185
S230.22160	30	60	160	15-50	22	60	M20	18	20-22	2030

ŚRUBY DO ŁAP S230 (CZĘŚĆ ZAMIENNA)

SCREWS FOR CLAMPS S230 (SPARE PART)

S231



Symbol	A	B	L	H	WAGA / WEIGHT (G)
S231.00010	40	M10	60	15	150
S231.00012	45	M12	60	15	210
S231.00016	45	M16	70	15	245
S231.00020	45	M20	80	15	300