

ŁAPY DOCISKOWE Z REGULOWANĄ ŚRUBĄ PODPOROWĄ

ADJUSTABLE CLAMPS WITH SQUARE THREAD SCREW
NR 6314AV

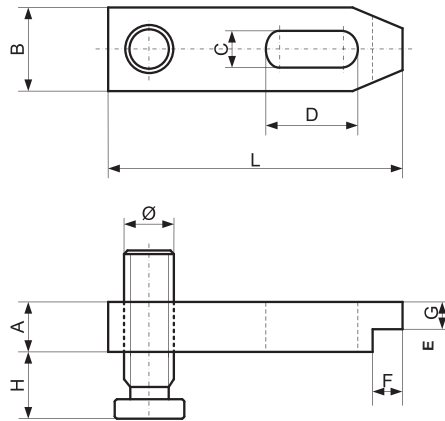
S280

Materiał / Material

Stal hartowana malowana
Hardened painted steel
R > 700N/mm²

Jak zamówić / How to order

Symbol: S280.22160



| Symbol | A | B | L | H | C | D | Ø | E | F | ŚRUBA / SCREW | WAGA / WEIGHT (G) |
|------------|----|----|-----|-------|----|-----|------|----|----|---------------|-------------------|
| S280.14100 | 20 | 40 | 100 | 15-50 | 15 | 40 | 20X4 | 12 | 12 | 12-14 | 620 |
| S280.14125 | 20 | 40 | 125 | 15-50 | 15 | 45 | 20X4 | 12 | 12 | 12-14 | 770 |
| S280.14160 | 20 | 40 | 160 | 15-50 | 15 | 60 | 20X4 | 12 | 12 | 12-14 | 950 |
| S280.18125 | 25 | 50 | 125 | 15-45 | 19 | 45 | 20X4 | 15 | 15 | 16-18 | 1090 |
| S280.18160 | 25 | 50 | 160 | 15-75 | 19 | 60 | 30X6 | 15 | 15 | 16-18 | 1640 |
| S280.18200 | 25 | 50 | 200 | 15-75 | 19 | 80 | 30X6 | 15 | 15 | 16-18 | 1970 |
| S280.22160 | 30 | 60 | 160 | 15-70 | 23 | 60 | 30X6 | 15 | 20 | 20-22 | 2120 |
| S280.22200 | 30 | 60 | 200 | 15-70 | 23 | 80 | 30X6 | 15 | 20 | 20-22 | 2570 |
| S280.26200 | 40 | 70 | 200 | 15-85 | 27 | 80 | 30X6 | 25 | 23 | 24 | 3700 |
| S280.26250 | 40 | 70 | 250 | 15-85 | 27 | 100 | 30X6 | 25 | 23 | 24 | 4620 |
| S280.26300 | 40 | 70 | 300 | 15-85 | 27 | 100 | 30X6 | 25 | 23 | 24 | 5740 |

ŚRUBY DO ŁAP S280 (CZĘŚĆ ZAMIENNA)

SCREWS FOR S280 CLAMPS (SPARE PARTS)
NR 6315GN

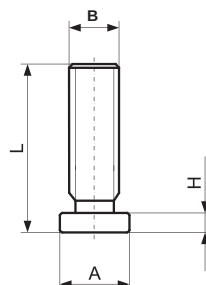
S281

Materiał / Material

Śruby z gwintem
kwadratowym klasa 8.8
Automatyczny stop stalowy
Screw with square thread class 8.8
Automatic alloy steel

Jak zamówić / How to order

Symbol: S281.30006



| Symbol | A | Ø | L | H | WAGA / WEIGHT (G) |
|--------------|----|------|-----|----|-------------------|
| S281.20004 | 35 | 20X4 | 70 | 10 | 190 |
| S281.30006 | 45 | 30X6 | 100 | 15 | 540 |
| S281.30006.A | 70 | 30X6 | 125 | 15 | 1050 |