

ŚRUBY TEOWE KOMPLET POD SZERSZY ROWEK Z NAKRĘTKĄ S340 ORAZ PODKŁADKĄ S390

S315

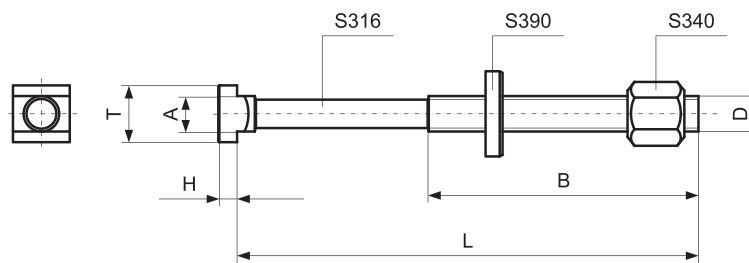
HAMMERHEAD BOLTS COMPLETE WITH NUT S340 AND WASHER S390

Materiał / Material

42CrMoS4 klasa 10.9
Gwint walcowany
42CrMoS4 class 10.9
Rolled thread

Jak zamówić / How to order

Symbol: S315.24200



Symbol	D	L	B	A	T	H		WAGA / WEIGHT (G)
S315.12050	M12	50	35	13,7	22	8	14	145
S315.12063		63	45					150
S315.12080		80	55					165
S315.12125		125	75					185
S315.12200		200	120					245
S315.14063	M14	63	45	15,7	25	9	16	210
S315.14100		100	63					245
S315.14160		160	100					305
S315.14230		230	150					370
S315.16063	M16	63	45	17,7	28	10	18	290
S315.16080		80	55					315
S315.16100		100	63					335
S315.16125		125	85					380
S315.16160		160	100					410
S315.16200		200	125					475
S315.16230		230	150					520
S315.16250		250	150					560
S315.20080	M20	80	55	21,7	35	14	22	515
S315.20100		100	63					565
S315.20125		125	85					615
S315.20160		160	110					675
S315.20200		200	125					755
S315.20230		230	150					830
S315.20315		315	190					1010
S315.24100	M24	100	70	27,7	44	18	28	1020
S315.24125		125	85					1110
S315.24160		160	110					1170
S315.24200		200	125					1320
S315.24230		230	150					1430
S315.24250		250	150					1490
S315.24315		315	240					1860
S315.30125	M30	125	80	35,7	53	22	36	1860
S315.30160		160	110					1940
S315.30200		200	134					2120
S315.30250		250	149					2360
S315.30315		315	190					2670