

ŚRUBY TEOWE POD SZERSZY ROWEK

SINGLE HAMMERHEAD BOLTS

DIN 787

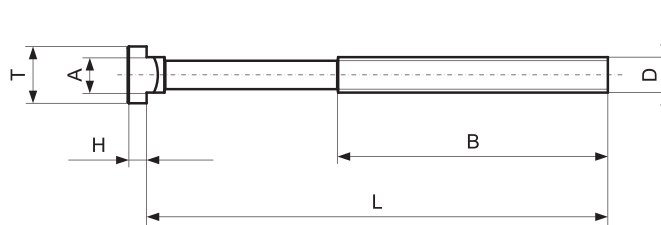
S316


Materiał / Material

42CrMoS4 klasa 10.9
Gwint walcowany
42CrMoS4 class 10.9
Rolled thread

Jak zamówić / How to order

Symbol: S316.24200



Symbol	D	L	B	A	T	H		WAGA / WEIGHT (G)
S316.12050	M12	50	35	13,7	22	8	14	80
S316.12063		63	45					85
S316.12080		80	55					100
S316.12125		125	75					120
S316.12200		200	120					180
S316.14063	M14	63	45	15,7	25	9	16	125
S316.14100		100	63					160
S316.14160		160	100					220
S316.14230		230	150					285
S316.16063	M16	63	45	17,7	28	10	18	160
S316.16080		80	55					185
S316.16100		100	63					205
S316.16125		125	85					250
S316.16160		160	100					280
S316.16200		200	125					345
S316.16230		230	150					390
S316.16250		250	150					430
S316.20080	M20	80	55	21,7	35	14	22	330
S316.20100		100	63					380
S316.20125		125	85					430
S316.20160		160	110					490
S316.20200		200	125					570
S316.20230	230	150	645					
S316.20315	315	190	820					
S316.24100	M24	100	70	27,7	44	18	28	650
S316.24125		125	85					740
S316.24160		160	110					800
S316.24200		200	125					950
S316.24230		230	150					1060
S316.24250		250	150					1120
S316.24315		315	240					1490
S316.30125	M30	125	80	35,7	53	22	36	1250
S316.30160		160	110					1300
S316.30200		200	134					1480
S316.30250		250	149					1720
S316.30315		315	190					2030

Elementy mocujące złączne transportowe