

ŚRUBY DWUSTRONNE KOMPLET Z NAKRĘTKĄ S330 ORAZ PODKŁADKĄ S370

STUDS COMPLETE WITH SHORT NUT S330 AND WASHER S370

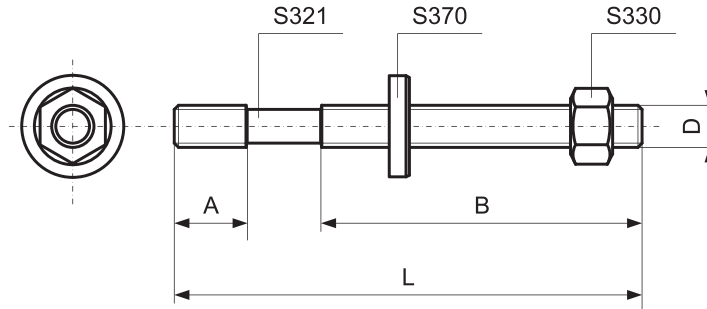
S320

Materiał / Material

42CrMoS4 klasa 10.9
Gwint walcowany
42CrMoS4 class 10.9
Rolled thread

Jak zamówić / How to order

Symbol: S320.24200



Elementy mocujące złączne transportowe

Symbol	D	L	A	B	WAGA / WEIGHT (G)
S320.08040	M8	40	11	20	25
S320.08060		63		40	35
S320.08080		80		50	40
S320.08100		100		63	45
S320.08125		125		75	50
S320.08160		160		100	60
S320.08200	200	100	80		
S320.10050	M10	50	13	25	50
S320.10060		63		35	55
S320.10080		80		50	65
S320.10100		100		75	75
S320.10120		120		75	85
S320.10160		160		100	105
S320.10200	200	125	125		
S320.12050	M12	50	15	25	80
S320.12060		63		32	85
S320.12080		80		50	95
S320.12100		100		63	110
S320.12125		125		75	130
S320.12160		160		100	155
S320.12200	200	125	180		
S320.12225	225	160	205		
S320.12250	250	160	220		
S320.14060	M14	63	17	32	145
S320.14080		80		50	150
S320.14100		100		63	160
S320.14120		120		75	185
S320.14160		160		100	215
S320.14200		200		125	260
S320.14225	225	160	290		
S320.14250	250	160	305		
S320.16065	M16	63	19	35	160
S320.16080		80		50	180
S320.16100		100		63	205
S320.16125		125		75	235
S320.16160		160		100	295
S320.16200		200		125	355
S320.16225	225	160	370		
S320.16250	250	160	400		
S320.16315	315	180	500		
S320.18080	M18	80	23	50	230
S320.18100		100		50	265
S320.18125		125		75	300
S320.18160		160		100	355
S320.18200		200		125	420
S320.18225		225		150	465
S320.18250	250	150	500		
S320.18315	315	180	600		

Symbol	D	L	A	B	WAGA / WEIGHT (G)
S320.20080	M20	80	27	30	305
S320.20100		100		50	325
S320.20125		125		70	375
S320.20160		160		100	450
S320.20200		200		125	530
S320.20225		225		160	585
S320.20250	250	160	630		
S320.20315	315	195	760		
S320.22100	M22	100	31	45	440
S320.22120		120		63	470
S320.22160		160		100	600
S320.22200		200		125	670
S320.22225		225		160	740
S320.22250		250		160	840
S320.22315	315	180	920		
S320.24100	M24	100	35	45	490
S320.24125		125		70	580
S320.24160		160		100	670
S320.24200		200		125	780
S320.24225		225		125	870
S320.24250		250		160	930
S320.24315	315	180	1120		
S320.27125	M27	125	39	56	785
S320.27150		150		80	870
S320.27200		195		125	1070
S320.27225		225		160	1160
S320.27250		250		160	1260
S320.27315		315		195	1410
S320.27400	400	250	1835		
S320.27500	500	315	2230		
S320.30125	M30	125	43	56	960
S320.30150		150		80	1080
S320.30200		195		125	1320
S320.30250		250		160	1550
S320.30315		315		195	1860
S320.30400		400		250	2250
S320.30500	500	315	2730		
S320.30700	700	400	3670		
S320.36160	M36	160	51	80	1725
S320.36200		200		125	1965
S320.36250		250		160	2335
S320.36315		315		195	2775
S320.36400		400		250	3365
S320.36500		500		315	4165
S320.36700	700	400	5405		