

# ŚRUBY DWUSTRONNE

## SINGLE STUDS

### DIN 6379

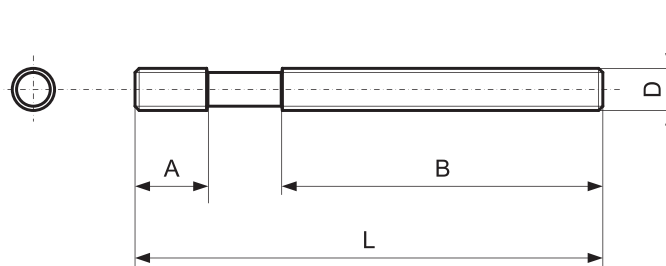
# S321

#### Material / Material

42CrMoS4 klasa 10.9  
Gwint walcowany  
42CrMoS4 class 10.9  
Rolled thread

#### Jak zamówić / How to order

Symbol: S321.24200



Symbol	D	L	A	B	WAGA / WEIGHT (G)
S321.08040		40		20	13
S321.08060		63		40	20
S321.08080		80		50	25
S321.08100	M8	100	11	63	30
S321.08125		125		75	36
S321.08160		160		100	45
S321.08200		200		100	65
S321.10050		50		25	25
S321.10060		63		35	30
S321.10080		80		50	40
S321.10100	M10	100	13	75	50
S321.10120		120		75	65
S321.10160		160		100	80
S321.10200		200		125	100
S321.12050		50		25	37
S321.12060		63		32	45
S321.12080		80		50	55
S321.12100		100		63	70
S321.12125	M12	125	15	75	90
S321.12160		160		100	115
S321.12200		200		125	140
S321.12225		225		160	165
S321.12250		250		160	180
S321.14060		63		32	65
S321.14080		80		50	80
S321.14100		100		63	95
S321.14120	M14	120	17	75	120
S321.14160		160		100	150
S321.14200		200		125	195
S321.14225		225		160	225
S321.14250		250		160	240
S321.16065		63		35	85
S321.16080		80		50	105
S321.16100		100		63	130
S321.16125		125		75	160
S321.16160		160		100	220
S321.16200		200		125	280
S321.16225	M16	225	19	160	295
S321.16250		250		160	325
S321.16315		315		180	425
S321.16350		350		180	450
S321.16400		400		250	500
S321.16450		450		250	550
S321.16500		500		315	600
S321.18080		80		50	130
S321.18100		100		50	165
S321.18125		125		75	200
S321.18160		160		100	255
S321.18200	M18	200	23	125	320
S321.18225		225		150	365
S321.18250		250		150	400
S321.18315		315		180	500
S321.18400		400		250	640
S321.20080		80		30	165
S321.20100	M20	100	27	50	205
S321.20125		125		70	255
S321.20160		160		100	325
S321.20200		200		125	410

Symbol	D	L	A	B	WAGA / WEIGHT (G)
S321.20225		225		160	465
S321.20250		250		160	510
S321.20315		315		195	640
S321.20350		350		195	720
S321.20400		400		250	820
S321.20450	M20	450	27	250	930
S321.20500		500		315	1020
S321.20600		600		315	1220
S321.20650		650		315	1350
S321.20700		700		400	1420
S321.20800		800		400	1630
S321.20900		900		400	1850
S321.22100		100		45	270
S321.22120		120		63	300
S321.22160		160		100	430
S321.22200		200		125	500
S321.22225	M22	225	31	160	570
S321.22250		250		160	670
S321.22315		315		180	750
S321.22350		350		195	840
S321.22400		400		250	950
S321.22500		500		315	1119
S321.24100		100		45	290
S321.24125		125		70	380
S321.24160		160		100	470
S321.24200	M24	200	35	125	580
S321.24225		225		125	670
S321.24250		250		160	730
S321.24315		315		180	920
S321.24350		350		195	1020
S321.24400		400		250	1150
S321.24450		450		250	1300
S321.24500		500		315	1460
S321.24600		600		315	1750
S321.27125		125		56	485
S321.27150	M27	150	39	80	570
S321.27200		200		125	770
S321.27225		225		160	860
S321.27250		250		160	960
S321.27315		315		195	1110
S321.27400		400		250	1535
S321.27500		500		315	1930
S321.30125		125		56	590
S321.30150	M30	150	43	80	710
S321.30200		200		125	950
S321.30250		250		160	1180
S321.30315		315		195	1490
S321.30400		400		250	1880
S321.30500		500		315	2360
S321.30700		700		400	3300
S321.36160		160		80	1100
S321.36200	M36	200	51	125	1340
S321.36250		250		160	1710
S321.36315		315		195	2150
S321.36400		400		250	2740
S321.36500		500		315	3540
S321.36700		700		400	4780

Elementy mocujące złączne transportowe