

# UCHWYTY TRANSPORTOWE ZE SWORZNIAMI

LIFTING BRACKETS WITH PINS

# C105-03



Materiał / Material

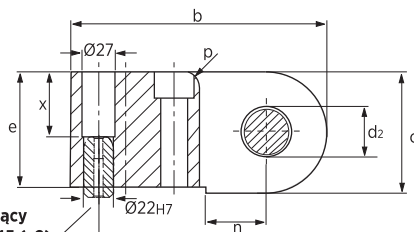
St52

Jak zamówić / How to order

Symbol: C105-03-16000

Uwaga / Attention

Ze względów bezpieczeństwa, należy wziąć pod uwagę, że zawsze waga tłoczniaka musi być obsługiwana przez 2 uchwyty transportowe. Brak śrub w zestawie, zamów osobno, śruby str. 742  
For safety reason, please consider always that the weight of the die has to be supported by just 2 lifting brackets. No screws included, order separately - page 742

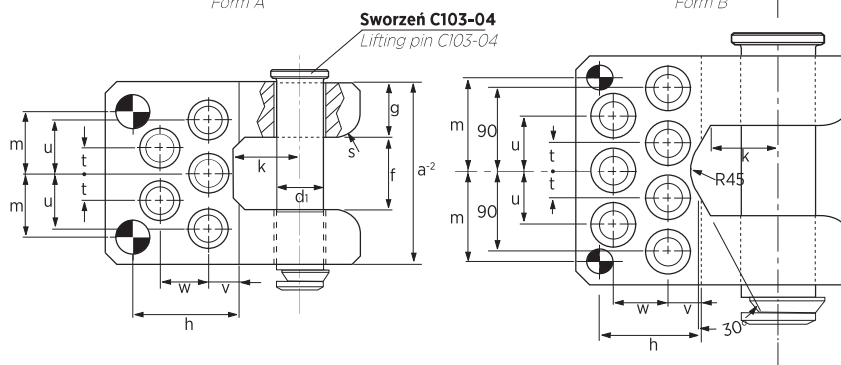


Kolek ustalający  
M303-02-022045 (x2)  
Locating pin  
M303-02-022045 (x2)



Forma A  
Form A

Forma B  
Form B



| Symbol        | Max obciążenie<br>Max load<br>(kg) | Max waga tłoczniaka<br>Max die weight<br>(kg) | Forma<br>Form | a   | b   | c   | d1 | d2 | e   | f   | g  |
|---------------|------------------------------------|-----------------------------------------------|---------------|-----|-----|-----|----|----|-----|-----|----|
| C105-03-06400 | 3200                               | 6400                                          | A             | 126 | 185 | 80  | 30 | 32 | 75  | 50  | 38 |
| C105-03-10000 | 5000                               | 10000                                         | A             | 150 | 210 | 100 | 40 | 42 | 95  | 60  | 45 |
| C105-03-16000 | 8000                               | 16000                                         | A             | 175 | 240 | 120 | 50 | 52 | 115 | 75  | 50 |
| C105-03-25000 | 12500                              | 25000                                         | A             | 200 | 300 | 140 | 60 | 62 | 130 | 80  | 60 |
| C105-03-36000 | 18000                              | 36000                                         | B             | 250 | 300 | 160 | 80 | 82 | 150 | 100 | 75 |

| Symbol        | h<br>±0,02 | k  | m    | n  | p  | s  | t    | u  | v  | w  | x   | Śruby<br>Screws |
|---------------|------------|----|------|----|----|----|------|----|----|----|-----|-----------------|
| C105-03-06400 | 85         | 50 | 45   | 40 | 12 | 16 | 20   | 40 | 30 | 35 | 40  | M16x80          |
| C105-03-10000 | 87         | 55 | 52   | 50 | 12 | 20 | 22,5 | 45 | 25 | 40 | 60  | M20x100         |
| C105-03-16000 | 95         | 70 | 62,5 | 60 | 16 | 24 | 25   | 50 | 35 | 45 | 80  | M24x120         |
| C105-03-25000 | 145        | 80 | 77,5 | 65 | 20 | 30 | 35   | 65 | 60 | 65 | 95  | M36x160         |
| C105-03-36000 | 105        | 95 | 100  | 90 | 20 | 30 | 30   | 60 | 30 | 60 | 115 | M30x160         |

Elementy transportowe, mocujące i złączne