

# PODNOŚNIKI DO BLACHY

SHEET LIFTING PIN

# SLP

Symbol	d h6	l -0,5	l1	l2	l3 ±0,1	l4	d1	l5	d2 -0,05/-0,1	d3 -0,2/-0,5
SLP.13.036.025	13	36	-	3	25	3	-	5	7	16
SLP.13.043.032	13	43	-	3	32	3	-	5	7	16
SLP.13.051.040	13	51	-	3	40	3	-	5	7	16
SLP.13.061.050	13	61	-	3	50	3	-	5	7	16
SLP.16.042.032	16	42	24	3	32	3	10,5	4	7	20
SLP.16.043.032	16	43	-	3	32	3	-	5	8	20
SLP.16.044.032	16	44	24	3	32	5	10,5	4	8	20
SLP.16.050.040	16	50	30	3	40	3	10,5	4	8	20
SLP.16.051.040	16	51	-	3	40	3	-	5	8	20
SLP.16.052.040	16	52	30	3	40	5	10,5	4	8	20
SLP.16.060.050	16	60	40	3	50	3	10,5	4	8	20
SLP.16.061.050	16	61	-	3	50	3	-	5	8	20
SLP.16.062.050	16	62	40	3	50	5	10,5	4	8	20
SLP.20.052.040	20	52	30	5	40	3	12,5	4	12	25
SLP.20.054.040	20	54	30	5	40	5	12,5	4	12	25
SLP.20.062.050	20	62	40	5	50	3	12,5	4	12	25
SLP.20.064.050	20	64	40	5	50	5	12,5	4	12	25
SLP.20.075.063	20	75	50	5	63	3	12,5	4	12	25
SLP.20.077.063	20	77	50	5	63	5	12,5	4	12	25

# KORKI ZAMYKAJĄCE

SCREW PLUG

# KZ

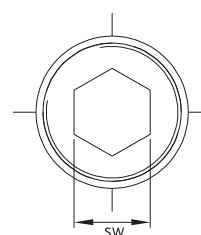
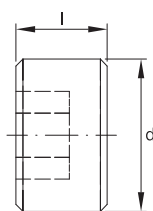
Materiał / Material

Stal / Steel 12.9

Jak zamówić / How to order

Symbol: KZ.016

Inne wymiary na żądanie  
Other dimensions on demand



Symbol	d	l	sw
KZ.012	M12x1,5	10	6
KZ.014	M14x1,5	10	6
KZ.016	M16x1,5	10	8
KZ.018	M18x1,5	10	10
KZ.020	M20x1,5	12	10
KZ.022	M22x1,5	12	12
KZ.024	M24x1,5	12	14
KZ.027	M27x1,5	12	14
KZ.036	M36x1,5	12	17

Elementy transportowe, mocujące i złączne