

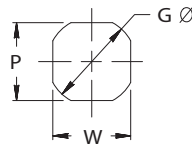
STANDARDOWE KSZTAŁY

Views are shown looking through the shank of punch and top of button, as in true die position. Standard ballseat location is at 90°, standard flat location is at 0°. Points are centered on shanks unless noted by drawing. Female corners on buttons will be furnished with a .2 radius to facilitate wire EDM. To order the first character is M, then specify body type similar to other standard items, (second alpha characters), then "U" as the third alpha character. ADD an alteration code U-__ to describe universal shape.

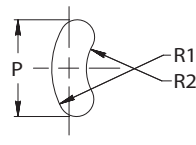
ORDER EXAMPLE: MHU 32-090 P=24.5 W=16.6 R=1.5, U-17

MISCELLANEOUS

U-05

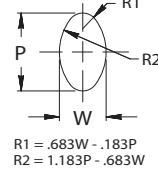


U-06

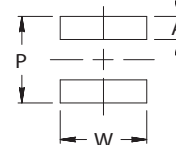


90°

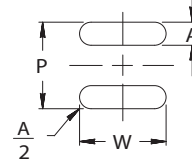
U-07



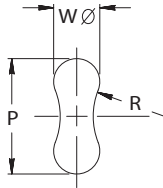
U-08



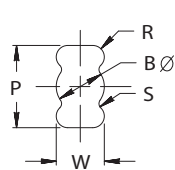
U-09



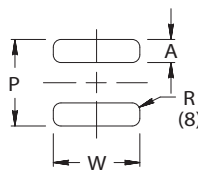
U-10



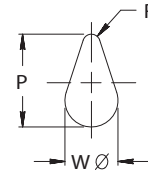
U-11



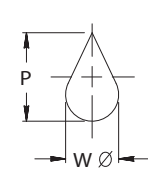
U-12



U-13

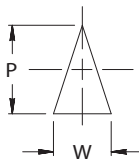


U-14

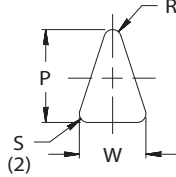


TRIANGLES/TRAPEZOIDS

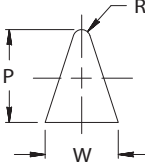
U-15



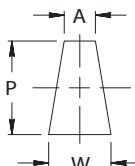
U-16



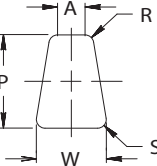
U-17



U-18



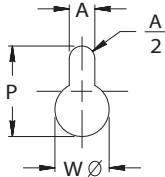
U-19



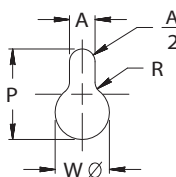
MONO LOBES

180°

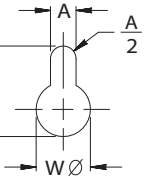
U-20



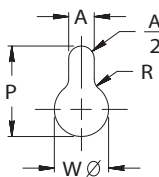
U-21



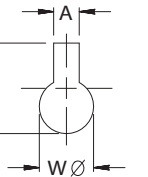
U-22



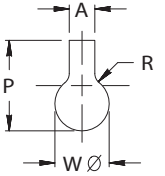
U-23



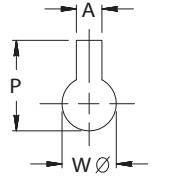
U-24



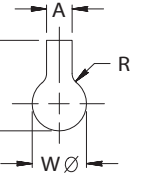
U-25



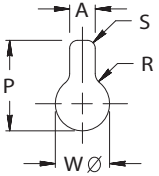
U-26



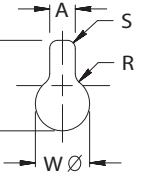
U-27



U-28

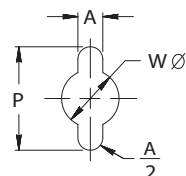


U-29

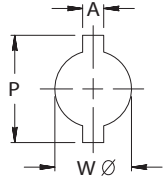


MULTI LOBES

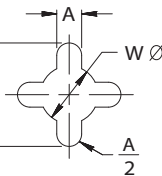
U-30



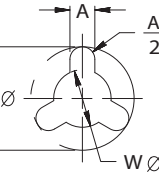
U-31



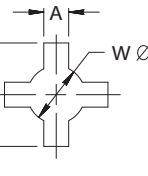
U-32



U-33



U-34



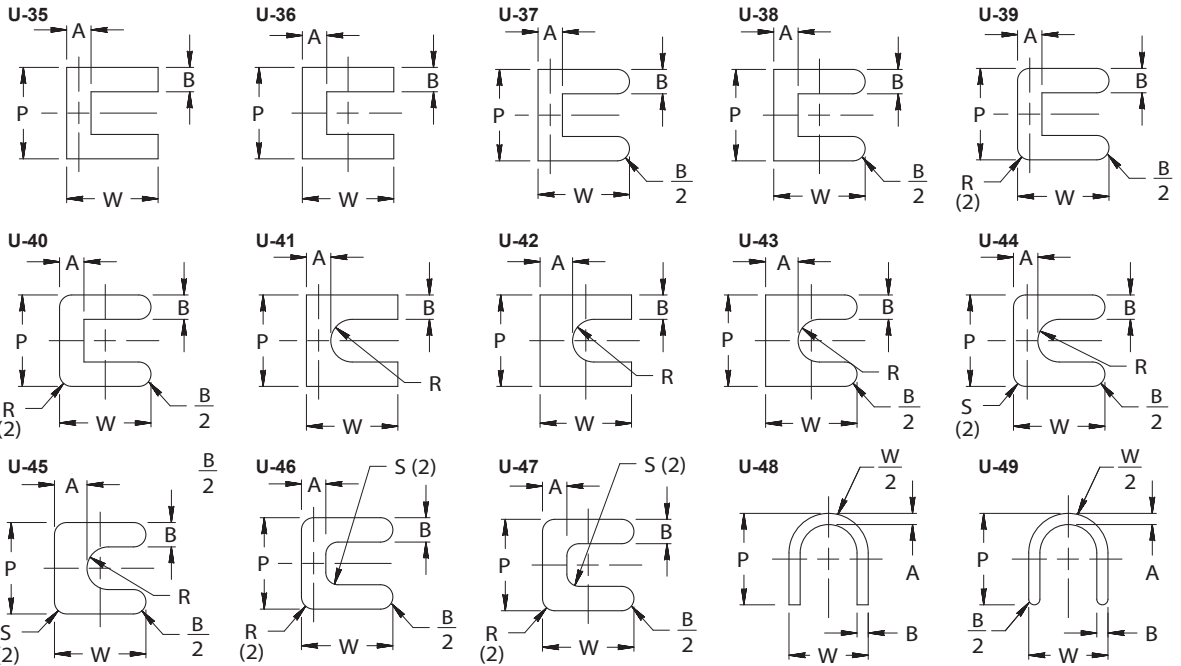
270°

STANDARDOWE KSZTAŁY

Views are shown looking through the shank of punch and top of button, as in true die position. Standard ballseat location is at 90°, standard flat location is at 0°. Points are centered on shanks unless noted by drawing. Female corners on buttons will be furnished with a .2 radius to facilitate wire EDM. To order, the first character is M, then specify body type similar to other standard items, (second alpha characters), then "U" as the third alpha character. ADD an alteration code U-__ to describe universal shape.

ORDER EXAMPLE: MHU32-090 P=24.5 W=16.6 B=5.5 A=5.5, U-38

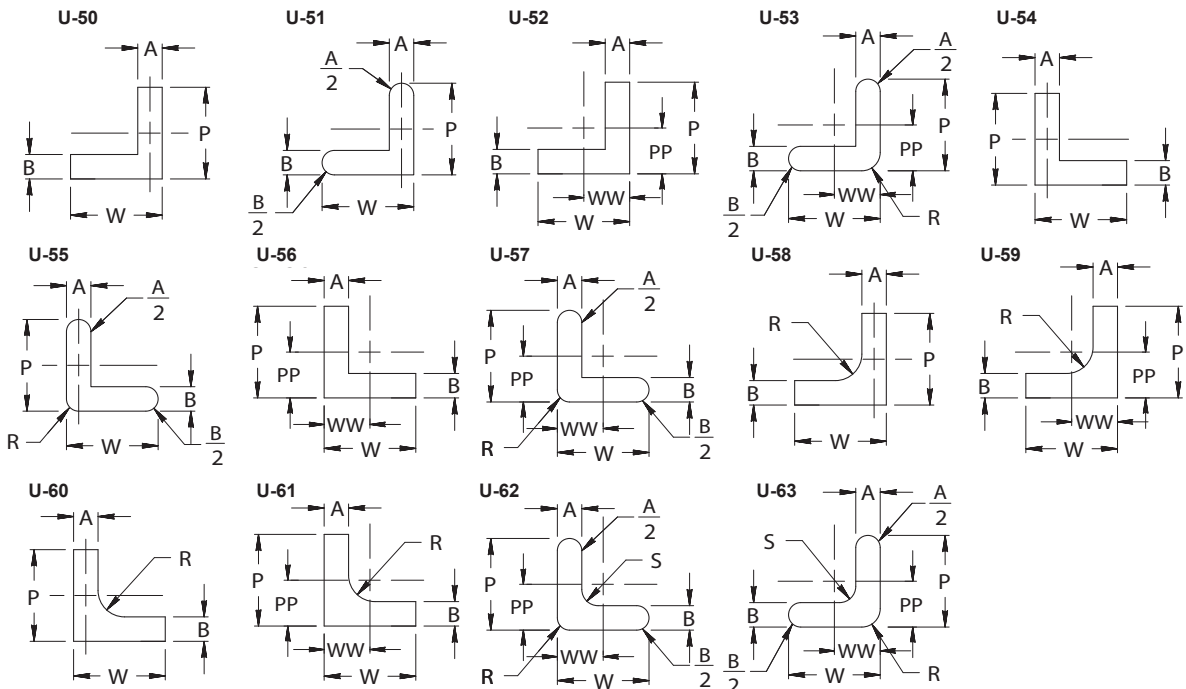
U's



90°

L's

180°



0°

270°