

WPUSTY PASOWANE

KEYS

M317-08



Materiał / Material

90MnCrV8

Twardość / Hardness

58 + 60 HRC

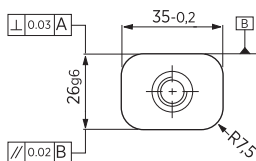
Jak zamówić / How to order

Symbol: **M317-08-2660**

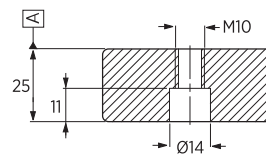
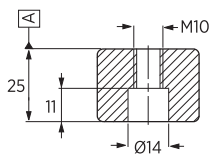
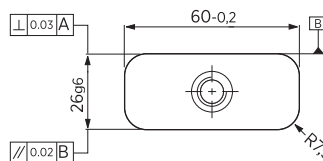
Inne wymiary na żądanie
Other dimensions on demand



Forma - A
Form - A



Forma - B
Form - B



Symbol	Forma Form
M317-08-2635	A
M317-08-2660	B

Elementy transportowe, mocujące i złączne