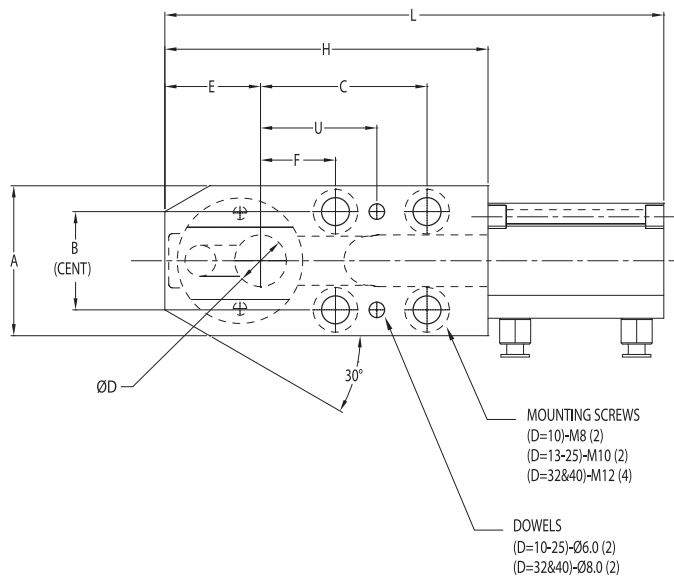


RETRACTABLE RETAINERS

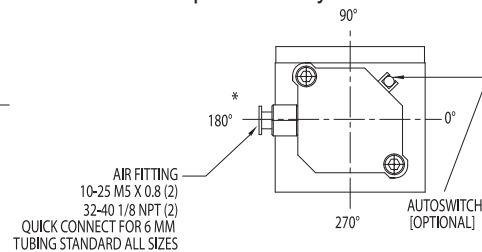
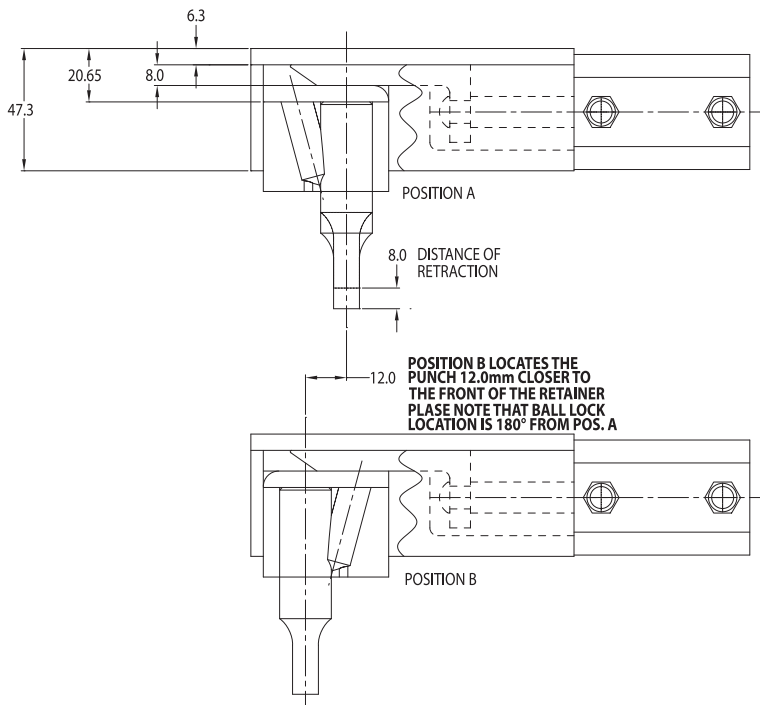


BALL-LOCK STYLE/HEAVY DUTY



Moeller dual-position ball lock retractable retainers provide the capability to add, or subtract, holes quickly without affecting demanding production schedules, and without the added cost of additional tooling.

Moeller dual-position ball lock retractable retainers are available to conform to NAAMS, and leading automotive standards. Position B facilitates close-space applications by moving the punch 12mm closer to the front end of the retainer. Moeller dual-position ball lock retainers feature a strong and convenient one-piece body, eliminating the need for a separate safety shield.



RECOMMENDED AIR PRESSURE:
4.60-5.3 kgf/cm² (65-75 PSI)

MINIMUM PRESSURE:
3.2 kgf/cm² (45 PSI)

MAXIMUM PRESSURE:
10.2 kgf/cm² (145 PSI)

NOTE:
CHANGE RETAINER SET INCLUDES ALL NECESSARY SCREWS AND DOWELS, AIR CYLINDER AND FITTINGS. TUBING FOR AIR SUPPLY AND AUTOSWITCH ARE NOT INCLUDED AND MUST BE ORDERED SEPARATELY.
CONSULT FACTORY FOR ADDITIONAL ACCESSORIES.

NUMER KATALOGOWY	D	L	A	±.01 B	C		E		F		H	U ±.01		SCREW SIZE
					POS.A	POS.B	POS.A	POS.B	POS.A	POS.B		POS.A	POS.B	
MRA 10	10	161	46	30			28	16	21	33	93.5	37	49	M8
MRA 13	13	172.5	50	30			28	16	25	37	100	41	53	M10
MRA 16	16	177	50	30			31	19	25	37	104.5	41	53	M10
MRA 20	20	191.5	58	38			32.5	20.5	29	41	113.5	45	57	M10
MRA 25	25	206.5	58	38			35	23	29	41	123.5	45	57	M10
MRA 32	32	260	80	56	100	112	38	26	38	50	152	60	72	M12
MRA 40	40	264	80	56	100	112	42	30	38	50	156	60	72	M12

ORDERING EXAMPLE: MRA 13, OR MRA 13 POSITION B