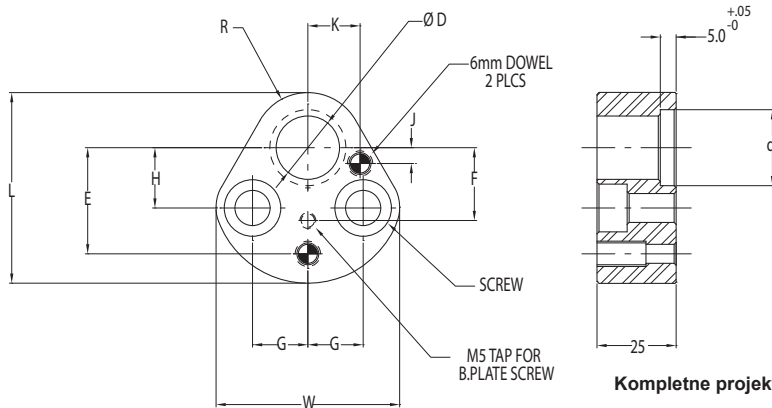




SHOULDER PUNCH RETAINERS



TRUE SET MRN STYLE For Round Punches

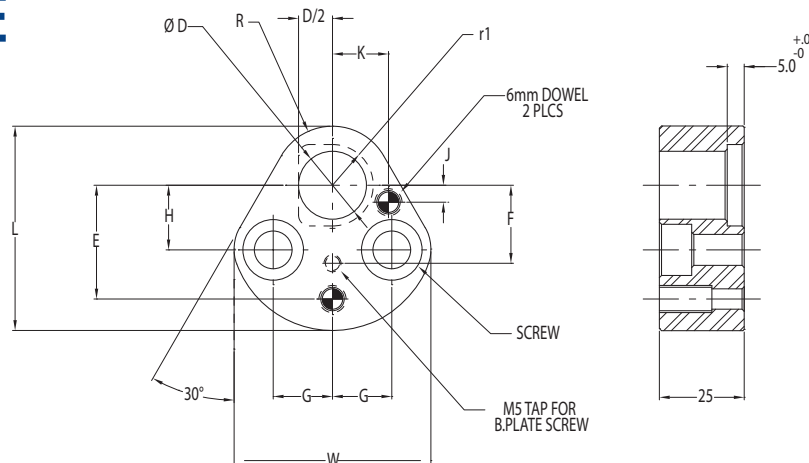


FOR ACCESSORIES AND BACKING PLATES
SEE PAGE 61.

Kompletne projekty oraz pliki CAD odwiedź WWW.MOELLERMCAD.COM

NUMER KATALOGOWY	D	d1	L	W	R	H	±.01 J	±.01 K	G	±.01 E	F	SCREW SIZE
MRN 10	10	14.0	44.5	39.9	9.5	19.05	7.50	9.00	11.12	26.924	16.00	M8
MRN 13	13	17.0	50.8	48.3	12.7	19.05	6.50	12.00	14.27	29.972	16.00	M8
MRN 16	16	20.0	54.0	51.6	14.3	19.05	6.00	13.50	15.87	31.750	16.00	M8
MRN 20	20	24.0	60.3	58.2	17.5	19.05	5.00	16.50	17.47	33.528	23.00	M10
MRN 25	25	29.0	69.9	66.5	22.2	23.82	7.00	22.00	19.84	40.640	30.00	M12
MRN 32	32	36.0	69.9	66.5	22.2	23.82	7.00	22.00	19.84	40.640	30.00	M12

MRO STYLE For Shaped Punches



Kompletne projekty oraz pliki CAD odwiedź WWW.MOELLERMCAD.COM

NUMER KATALOGOWY	D	r1	L	W	R	H	±.01 J	±.01 K	G	±.01 E	F	SCREW SIZE
MRO 10	10	7.0	44.5	39.9	9.5	19.05	7.50	9.00	11.12	26.924	16.00	M8
MRO 13	13	8.5	50.8	48.3	12.7	19.05	6.50	12.00	14.27	29.972	16.00	M8
MRO 16	16	10.0	54.0	51.6	14.3	19.05	6.00	13.50	15.87	31.750	16.00	M8
MRO 20	20	12.0	60.3	58.2	17.5	19.05	5.00	16.50	17.47	33.528	23.00	M10
MRO 25	25	14.5	69.9	66.5	22.2	23.82	7.00	22.00	19.84	40.640	30.00	M12
MRO 32	32	18.0	69.9	66.5	22.2	23.82	7.00	22.00	19.84	40.640	30.00	M12

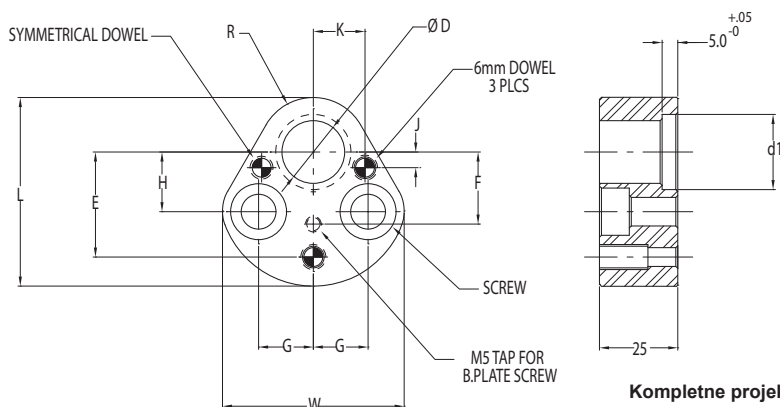


SHOULDER PUNCH RETAINERS



TRUE SET MRP STYLE

with Symmetrical 3rd Dowel
For Round Punches

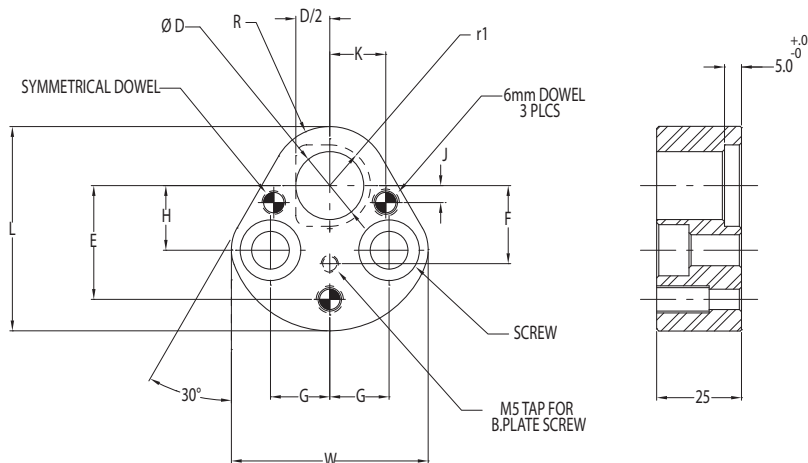


FOR ACCESSORIES AND BACKING PLATES
SEE PAGE 61.

Kompletne projekty oraz pliki CAD odwiedź WWW.MOELLERMCAD.COM

NUMER KATALOGOWY	D	d1	L	W	R	H	±.01 J	±.01 K	G	±.01 E	F	SCREW SIZE
MRP 10	10	14.0	44.5	39.9	9.5	19.05	7.50	9.00	11.12	26.924	16.00	M8
MRP 13	13	17.0	50.8	48.3	12.7	19.05	6.50	12.00	14.27	29.972	16.00	M8
MRP 16	16	20.0	54.0	51.6	14.3	19.05	6.00	13.50	15.87	31.750	16.00	M8
MRP 20	20	24.0	60.3	58.2	17.5	19.05	5.00	16.50	17.47	33.528	23.00	M10
MRP 25	25	29.0	69.9	66.5	22.2	23.82	7.00	22.00	19.84	40.640	30.00	M12
MRP 32	32	36.0	69.9	66.5	22.2	23.82	7.00	22.00	19.84	40.640	30.00	M12
MRP 40	40	44.0	77.4	77.8	26.0	27.00	10.00	26.00	24.00	43.993	33.35	M12

MRQ STYLE with Symmetrical 3rd Dowel For Shaped Punches



Kompletne projekty oraz pliki CAD odwiedź WWW.MOELLERMCAD.COM

NUMER KATALOGOWY	D	r1	L	W	R	H	±.01 J	±.01 K	G	±.01 E	F	SCREW SIZE
MRQ 10	10	7.0	44.5	39.9	9.5	19.05	7.50	9.00	11.12	26.924	16.00	M8
MRQ 13	13	8.5	50.8	48.3	12.7	19.05	6.50	12.00	14.27	29.972	16.00	M8
MRQ 16	16	10.0	54.0	51.6	14.3	19.05	6.00	13.50	15.87	31.750	16.00	M8
MRQ 20	20	12.0	60.3	58.2	17.5	19.05	5.00	16.50	17.47	33.528	23.00	M10
MRQ 25	25	14.5	69.9	66.5	22.2	23.82	7.00	22.00	19.84	40.640	30.00	M12
MRQ 32	32	18.0	69.9	66.5	22.2	23.82	7.00	22.00	19.84	40.640	30.00	M12
MRQ 40	40	22.0	77.4	77.8	26.0	27.00	10.00	26.00	24.00	43.993	33.35	M12