

PODNOŚNIKI DO BLACHY

SHEET LIFTING PIN

SLP

Materiał / Material

1.7131

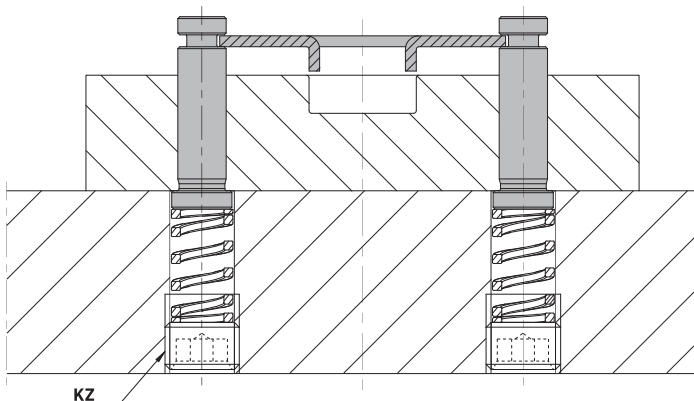
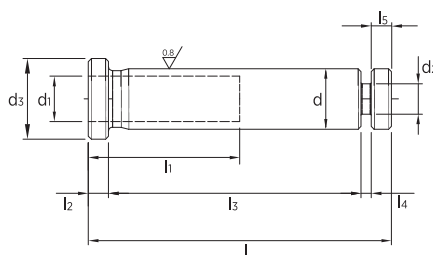
Twardość / Hardness

58 + 60 HRC

Jak zamówić / How to order

Symbol: SLP.10040

Inne wymiary na żądanie
Other dimensions on demand



Symbol	d h6	l -0.5	l1	l2	l3 ±0.1	l4	d1	l5	d2 -0.05/-0.1	d3 -0.2/-0.5
SLP.06.029.025	6	29.5	-	2	25	0.5	-	2	3	8
SLP.06.030.025	6	30	-	2	25	1	-	2	3	8
SLP.06.036.032	6	36.5	-	2	32	0.5	-	2	3	8
SLP.06.037.032	6	37	-	2	32	1	-	2	3	8
SLP.08.031.020	8	31	-	3	20	3	-	5	5	10
SLP.08.031.025	8	31	-	3	25	1	-	2	5	10
SLP.08.032.025	8	32	-	3	25	2	-	2	5	10
SLP.08.036.025	8	36	-	3	25	3	-	5	5	10
SLP.08.038.032	8	38	-	3	32	1	-	2	5	10
SLP.08.039.032	8	39	-	3	32	2	-	2	5	10
SLP.08.043.032	8	43	-	3	32	3	-	5	5	10
SLP.08.046.040	8	46	-	3	40	1	-	2	5	10
SLP.08.047.040	8	47	-	3	40	2	-	2	5	10
SLP.08.051.040	8	51	-	3	40	3	-	5	5	10
SLP.10.033.025	10	33	18	3	25	2	6.5	3	6	12.5
SLP.10.034.025	10	34	18	3	25	3	6.5	3	6	12.5
SLP.10.036.025	10	36	-	3	25	3	-	5	6	12
SLP.10.040.032	10	40	24	3	32	2	6.5	3	6	12.5
SLP.10.041.032	10	41	24	3	32	3	6.5	3	6	12.5
SLP.10.043.032	10	43	-	3	32	3	-	5	6	12
SLP.10.048.040	10	48	30	3	40	2	6.5	3	6	12.5
SLP.10.049.040	10	49	30	3	40	3	6.5	3	6	12.5
SLP.10.051.040	10	51	-	3	40	3	-	5	6	12
SLP.10.061.050	10	61	-	3	50	3	-	5	6	12
SLP.12.033.025	12	33	18	3	25	2	8.5	3	7	16
SLP.12.034.025	12	34	18	3	25	3	8.5	3	7	16
SLP.12.040.032	12	40	24	3	32	2	8.5	3	7	16
SLP.12.041.032	12	41	24	3	32	3	8.5	3	7	16
SLP.12.048.040	12	48	30	3	40	2	8.5	3	7	16
SLP.12.049.040	12	49	30	3	40	3	8.5	3	7	16

Elementy transportowe, mocujące i złączne

PODNOŚNIKI DO BLACHY

SHEET LIFTING PIN

SLP

Symbol	d h6	l -0,5	l1	l2	l3 ±0,1	l4	d1	l5	d2 -0,05/-0,1	d3 -0,2/-0,5
SLP.13.036.025	13	36	-	3	25	3	-	5	7	16
SLP.13.043.032	13	43	-	3	32	3	-	5	7	16
SLP.13.051.040	13	51	-	3	40	3	-	5	7	16
SLP.13.061.050	13	61	-	3	50	3	-	5	7	16
SLP.16.042.032	16	42	24	3	32	3	10,5	4	7	20
SLP.16.043.032	16	43	-	3	32	3	-	5	8	20
SLP.16.044.032	16	44	24	3	32	5	10,5	4	8	20
SLP.16.050.040	16	50	30	3	40	3	10,5	4	8	20
SLP.16.051.040	16	51	-	3	40	3	-	5	8	20
SLP.16.052.040	16	52	30	3	40	5	10,5	4	8	20
SLP.16.060.050	16	60	40	3	50	3	10,5	4	8	20
SLP.16.061.050	16	61	-	3	50	3	-	5	8	20
SLP.16.062.050	16	62	40	3	50	5	10,5	4	8	20
SLP.20.052.040	20	52	30	5	40	3	12,5	4	12	25
SLP.20.054.040	20	54	30	5	40	5	12,5	4	12	25
SLP.20.062.050	20	62	40	5	50	3	12,5	4	12	25
SLP.20.064.050	20	64	40	5	50	5	12,5	4	12	25
SLP.20.075.063	20	75	50	5	63	3	12,5	4	12	25
SLP.20.077.063	20	77	50	5	63	5	12,5	4	12	25

KORKI ZAMYKAJĄCE

SCREW PLUG

KZ

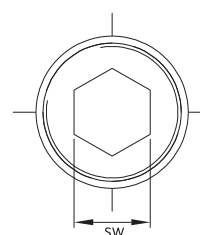
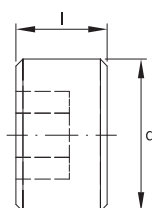
Materiał / Material

Stal / Steel 12.9

Jak zamówić / How to order

Symbol: KZ.016

Inne wymiary na żądanie
Other dimensions on demand



Symbol	d	l	sw
KZ.012	M12x1,5	10	6
KZ.014	M14x1,5	10	6
KZ.016	M16x1,5	10	8
KZ.018	M18x1,5	10	10
KZ.020	M20x1,5	12	10
KZ.022	M22x1,5	12	12
KZ.024	M24x1,5	12	14
KZ.027	M27x1,5	12	14
KZ.036	M36x1,5	12	17

Elementy transportowe, mocujące i złączne