

SŁUPY PROWADZĄCE

GUIDE PILLARS

C20M

Materiał / Material

1.7131

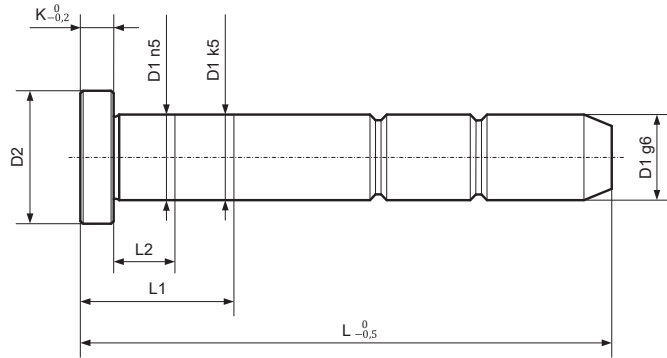
Twardość / Hardness

61 ± 63 HRC

Jak zamówić / How to order

Symbol: C20M30140

Inne wymiary na życzenie
Other dimensions on demand



Symbol	D1	L	L1	L2	D2	K
C20M1460	14	60	22	6	17	6
C20M1480		80				
C20M14100		100				
C20M14120		120	27	10		
C20M14140		140				
C20M14160		160				
C20M14180	180	15	22	6	18	6
C20M1560	60					
C20M1580	80					
C20M15100	100					
C20M15120	120		27	10		
C20M15140	140					
C20M15160	160					
C20M1680	16	80	22	6	19	6
C20M16100		100				
C20M16120		120				
C20M16140		140	27	10		
C20M16160		160				
C20M16180		180				
C20M1880	18	80	22	6	21	6
C20M18100		100				
C20M18120		120				
C20M18140		140	27	10		
C20M18160		160				
C20M18180		180				
C20M18200	200	20	36	23	6	
C20M18220	220					
C20M2080	80					
C20M20100	100		27			10
C20M20120	120					
C20M20140	140					
C20M20160	160	36	10			
C20M20180	180					
C20M20200	200					
C20M20220	220	22	10	25	6	
C20M20250	250					
C20M22100	100					
C20M22120	120		27			10
C20M22140	140					
C20M22160	160					
C20M22180	180	36	10			
C20M22200	200					
C20M22220	220					
C20M22250	250	24	46	27	6	
C20M22280	280					
C20M22320	320					
C20M24100	100		27			10
C20M24120	120					
C20M24140	140					
C20M24160	160	36	10			
C20M24180	180					
C20M24200	200					
C20M24220	220	46	10			
C20M24250	250					
C20M24280	280					
C20M24320	320	30	36	35	6	
C20M30120	120					
C20M30140	140					
C20M30160	160		10			10
C20M30180	180					
C20M30200	200					
C20M30220	220	76	15			
C20M30250	250					

Symbol	D1	L	L1	L2	D2	K	
C20M30280	30	280	46	10	35	6	
C20M30320		320					
C20M30360		360					
C20M30400		400					
C20M32120	32	120	36	10	37	6	
C20M32140		140					
C20M32160		160					
C20M32180		180	46				
C20M32200		200					
C20M32220		220					
C20M32250	250	56					
C20M32280	280						
C20M32320	320						
C20M32360	360						
C20M32400	400	40	46	15	45	10	
C20M40160	160						
C20M40180	180						
C20M40200	200		56				
C20M40220	220						
C20M40250	250						
C20M40280	280	66					
C20M40320	320						
C20M40360	360						
C20M40400	400						
C20M40450	450	76					
C20M40500	500						
C20M42160	160		42	46	15	47	10
C20M42180	180						
C20M42200	200						
C20M42220	220	56					
C20M42250	250						
C20M42280	280						
C20M42320	320	66					
C20M42360	360						
C20M42400	400						
C20M42450	450						
C20M42500	500	76					
C20M50200	200		50	56	15	55	10
C20M50250	250						
C20M50280	280						
C20M50320	320	66					
C20M50360	360						
C20M50400	400						
C20M50450	450	76					
C20M50500	500						
C20M50550	550		52	86	15	57	10
C20M52200	200						
C20M52250	250						
C20M52280	280	56					
C20M52320	320						
C20M52360	360						
C20M52400	400	76					
C20M52450	450						
C20M52500	500						
C20M52550	550						
C20M60250	250	60	66	15	68	10	
C20M60280	280						
C20M60320	320						
C20M60360	360		76				
C20M60400	400						
C20M60500	500						

Elementy prowadzące do form wtryskowych