

# SŁUPY PROWADZĄCE

## STRIPPER MOUNTED PILLARS

# CEAS

Materiał / Material

1.7131

Twardość / Hardness

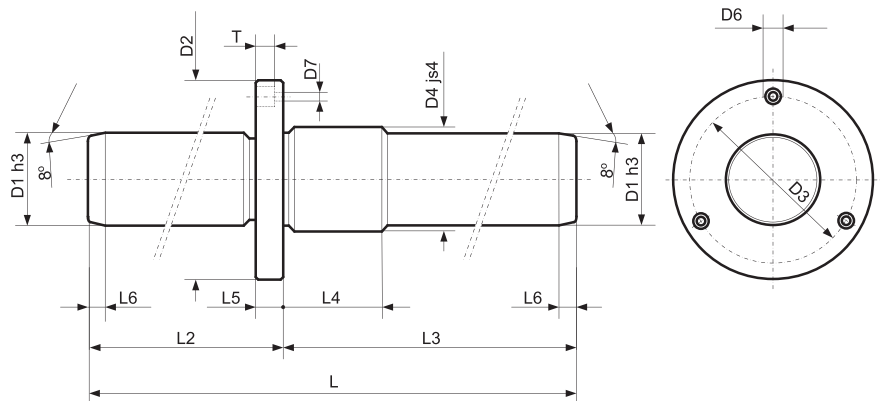
61 + 63 HRC

Jak zamówić / How to order

Symbol: CEAS4090110

Zaczepty str. H58  
Retaining clamps page H58

Inne wymiary na żądanie  
Other dimensions on demand



Symbol	D1	L2	L3	L	D2	D3	D4	D6	D7	L4	L5	L6	T
CEAS124050	12	40	50	90	28	20	13	6	3,4	12	6	3	3,4
CEAS124060		40	60	100									
CEAS125060		50	60	110									
CEAS125070		50	70	120									
CEAS126070		60	70	130									
CEAS127070		70	70	140									
CEAS166080	16	60	80	140	38	28	18	8	4,5	16	8	4	4,6
CEAS166090		60	90	150									
CEAS167090		70	90	160									
CEAS1670100		70	100	170									
CEAS1680100		80	100	180									
CEAS1690100		90	100	190									
CEAS197090	19	70	90	160	42	32	22	8	4,5	20	8	4	4,6
CEAS1970100		70	100	170									
CEAS1980100		80	100	180									
CEAS1980110		80	110	190									
CEAS1990110		90	110	200									
CEAS19100110		100	110	210									
CEAS2580100	25	80	100	180	48	38	26	8	4,5	22	8	6	4,6
CEAS2580110		80	110	190									
CEAS2590110		90	110	200									
CEAS2590120		90	120	210									
CEAS25100120		100	120	220									
CEAS25110120		110	120	230									
CEAS3280100	32	80	100	180	60	48	34	10	5,5	25	10	7	5,7
CEAS3280110		80	110	190									
CEAS3290110		90	110	200									
CEAS3290120		90	120	210									
CEAS32100120		100	120	220									
CEAS32100130		100	130	230									
CEAS32110130		110	130	240									
CEAS32110140		110	140	250									
CEAS4090110	40	90	110	200	70	56	42	11	6,6	27	12	7	6,8
CEAS4090120		90	120	210									
CEAS40100120		100	120	220									
CEAS40100130		100	130	230									
CEAS40110130		110	130	240									
CEAS40110140		110	140	250									
CEAS40120140		120	140	260									

Elementy prowadzące do tloczników