

WYPYCHACZE AZOTOWANE, OKSYDOWANE Z ŁBEM CYLINDRYCZNYM

ECB

EJECTOR PINS NITRIDED, OXIDIZED WITH CYLINDRICAL HEAD

DIN 1530 / ISO 6751

Materiał / Material

WS 1.2344
Łeb spęczany
Trzpień szlifowany i azotowany,
oksydowany
Cylindrical head hot folded.
Shaft fine ground finished, nitrided
and black oxidized.

Twardość / Hardness

Powierzchnia / Surface **70 HRC**
Łeb / Head **45±5 HRC**

Warunki pracy / working conditions

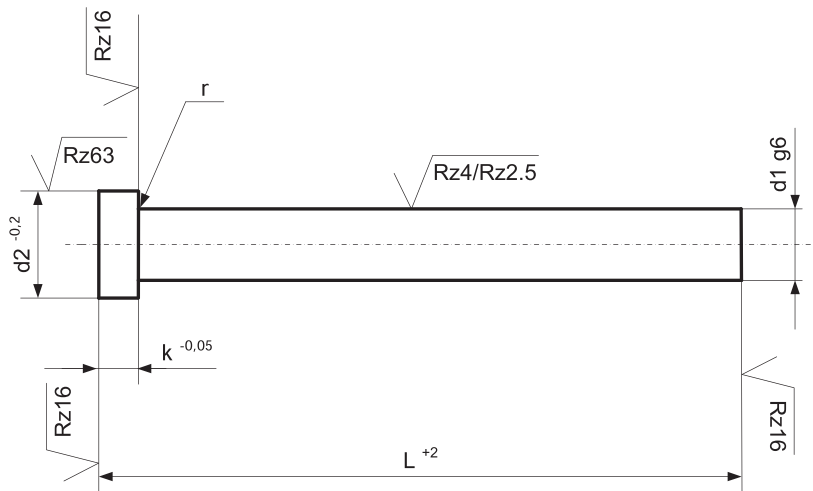
Odporność temp./ Temp. resistance: **650 °C**
Wytrzymałość rdzenia / Core STRENGTH approx.
150Kp/mm²

Jak zamówić / How to order

Symbol: **ECB**
+
d1: **10,0**
+
L: **500**

ECB.1000.0500

Inne wymiary na żądanie Other dimensions on demand



d1	d2	k	r	L +2													
				100	125	160	200	250	315	400	500	630	800	1000	1250		
1,0	2,5	1,2	0,2	x	x	x	x										
1,5	3,0	1,5	0,2	x	x	x	x										
2,0	4,0	2,0	0,2	x	x	x	x	x	x								
2,2	4,0	2,0	0,2	x	x	x	x	x	x								
2,5	5,0	2,0	0,3	x	x	x	x	x	x								
2,7	5,0	2,0	0,3	x	x	x	x	x	x								
3,0	6,0	3,0	0,3	x	x	x	x	x	x	x	x						
3,2	6,0	3,0	0,3	x	x	x	x	x	x	x	x						
3,5	7,0	3,0	0,3	x	x	x	x	x	x	x	x	x					
3,7	7,0	3,0	0,3	x	x	x	x	x	x	x	x						
4,0	8,0	3,0	0,3	x	x	x	x	x	x	x	x	x	x				
4,2	8,0	3,0	0,3	x	x	x	x	x	x	x	x	x					
4,5	8,0	3,0	0,3	x	x	x	x	x	x	x	x						
5,0	10,0	3,0	0,3	x	x	x	x	x	x	x	x	x	x	x			
5,2	10,0	3,0	0,3	x	x	x	x	x	x	x	x						
5,5	10,0	3,0	0,3	x	x	x	x	x	x	x	x	x					
6,0	12,0	5,0	0,5	x	x	x	x	x	x	x	x	x	x	x			
6,2	12,0	5,0	0,5	x	x	x	x	x	x	x	x	x					
6,5	12,0	5,0	0,5	x	x	x	x	x	x	x	x	x	x				
7,0	12,0	5,0	0,5	x	x	x	x	x	x	x	x	x	x				
7,5	12,0	5,0	0,5	x	x	x	x	x	x	x	x						
8,0	14,0	5,0	0,5	x	x	x	x	x	x	x	x	x	x	x	x		
8,2	14,0	5,0	0,5	x	x	x	x	x	x	x	x	x	x				
8,5	14,0	5,0	0,5	x	x	x	x	x	x	x	x	x	x				
9,0	14,0	5,0	0,5	x	x	x	x	x	x	x	x	x	x				
9,5	14,0	5,0	0,5	x	x	x	x	x	x	x	x						
10,0	16,0	5,0	0,5	x	x	x	x	x	x	x	x	x	x	x	x		
10,2	16,0	5,0	0,5	x	x	x	x	x	x	x	x	x	x				
10,5	16,0	5,0	0,5	x	x	x	x	x	x	x	x	x					
11,0	16,0	5,0	0,5	x	x	x	x	x	x	x	x	x					
12,0	18,0	7,0	0,8	x	x	x	x	x	x	x	x	x	x	x	x		
12,2	18,0	7,0	0,8	x	x	x	x	x	x	x	x	x	x				
12,5	18,0	7,0	0,8	x	x	x	x	x	x	x	x	x	x				
14,0	22,0	7,0	0,8	x	x	x	x	x	x	x	x	x	x	x			
16,0	22,0	7,0	0,8	x	x	x	x	x	x	x	x	x	x	x	x		
18,0	24,0	7,0	0,8	x	x	x	x	x	x	x	x	x	x	x			
20,0	26,0	8,0	1,1	x	x	x	x	x	x	x	x	x	x	x	x		
25,0	32,0	10,0	1,1					x	x	x	x	x	x	x			
32,0	40,0	10,0	1,1					x	x	x	x	x	x	x	x		