

RDZENIE FORMUJĄCE

FORMING CORES

ISO 6751

ECC

Materiał / Material

WS - 1.2344
 Łeb spęczany
 Trzpień szlifowany,
 wstępnie hartowany
 Cylindrical head hot folded.
 Shaft fine ground finished,
 pre hardened

Twardość / Hardness

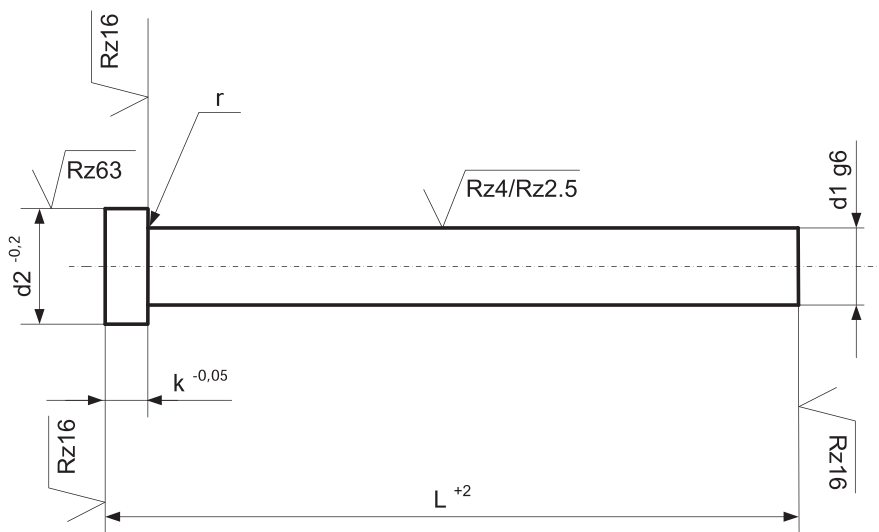
Powierzchnia / Surface 40-45 HRC
 Rdzeń / Core 40-45 HRC
 Łeb / Head 45±5 HRC

Jak zamówić / How to order

Symbol: ECC
 +
 d1: 10,0
 +
 L: 500

ECC.1000.0500

Inne wymiary na życzenie
 Other dimensions on demand



d1 g6	d2 -0,2	k -0,05	r	L +2												
				100	125	160	200	250	315	400	500	630	800			
1,5	3,0	1,5	0,2	x												
2,0	4,0	2,0	0,2	x	x	x	x	x								
2,2	4,0	2,0	0,2	x	x	x										
2,5	5,0	2,0	0,3	x	x	x	x	x								
2,7	5,0	2,0	0,3	x	x	x										
3,0	6,0	3,0	0,3	x	x	x	x	x	x	x						
3,2	6,0	3,0	0,3	x	x	x	x									
3,5	7,0	3,0	0,3	x	x	x	x	x	x							
3,7	7,0	3,0	0,3	x	x											
4,0	8,0	3,0	0,3	x	x	x	x	x	x	x	x					
4,2	8,0	3,0	0,3	x	x	x	x	x	x							
4,5	8,0	3,0	0,3	x	x	x	x	x	x							
5,0	10,0	3,0	0,3	x	x	x	x	x	x	x						
5,2	10,0	3,0	0,3	x	x	x	x	x	x							
5,5	10,0	3,0	0,3	x	x	x	x	x	x	x						
6,0	12,0	5,0	0,5	x	x	x	x	x	x	x	x	x				
6,2	12,0	5,0	0,5	x	x	x	x	x	x	x						
6,5	12,0	5,0	0,5	x	x	x	x	x	x	x						
7,0	12,0	5,0	0,5	x	x	x	x	x	x	x						
7,5	12,0	5,0	0,5	x	x	x	x	x	x	x						
8,0	14,0	5,0	0,5	x	x	x	x	x	x	x	x	x				
8,2	14,0	5,0	0,5	x	x	x	x	x	x	x						
8,5	14,0	5,0	0,5	x	x	x	x	x	x	x						
9,0	14,0	5,0	0,5	x	x	x	x	x	x	x	x					
10,0	16,0	5,0	0,5	x	x	x	x	x	x	x	x	x				
10,2	16,0	5,0	0,5	x	x	x	x	x	x	x						
10,5	16,0	5,0	0,5	x	x	x	x	x	x	x	x					
11,0	16,0	5,0	0,5	x	x	x	x	x	x	x	x					
12,0	18,0	7,0	0,8	x	x	x	x	x	x	x	x	x	x			
12,5	18,0	7,0	0,8	x	x	x	x	x	x	x	x	x				
13,0	18,0	7,0	0,8			x	x	x	x	x						
14,0	22,0	7,0	0,8	x	x	x	x	x	x	x	x	x	x			
16,0	22,0	7,0	0,8	x	x	x	x	x	x	x	x	x	x	x		
18,0	24,0	7,0	0,8	x	x	x	x	x	x	x	x	x	x			
20,0	26,0	8,0	1,1	x	x	x	x	x	x	x	x	x				
25,0	32,0	10,0	1,1					x		x	x					

Wypychacze do form wtryskowych