

WYPYCHACZE HARTOWANE Z ŁBEM CYLINDRYCZNYM

EJECTOR PINS HARDENED WITH CYLINDRICAL HEAD

DIN 1530AH / ISO 6751

ECT

Materiał / Material

WS - 1.2510
 Łeb odpżężany
 Trzpień szlifowany
 Head annealed.
 Shaft through hardened,
 fine ground finished.

Twardość / Hardness

Trzpień / Shaft 60±2 HRC
 Łeb / Head 45±5 HRC

Warunki pracy / working conditions

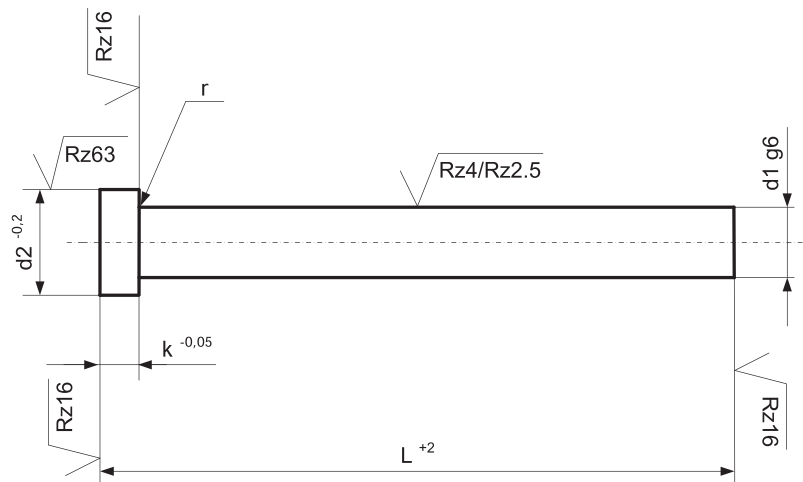
Odporność temp./ Temp. resistance: 220 °C

Jak zamówić / How to order

Symbol: ECT
 +
 d1: 10,0
 +
 L: 500

ECT.1000.0500

Inne wymiary na żądanie
 Other dimensions on demand



d1	d2	k	r	L +2												
				40	63	80	100	125	160	200	250	315	400	500		
1.0	25	1.2	0.2				x	x	x	x						
1.1	25	1.2	0.2				x	x	x	x						
1.2	25	1.2	0.2				x	x	x	x						
1.3	30	1.5	0.2				x	x	x	x						
1.4	30	1.5	0.2				x	x	x	x						
1.5	30	1.5	0.2				x	x	x	x						
1.6	30	1.5	0.2				x	x	x	x						
1.7	30	1.5	0.2				x	x	x	x						
1.8	30	1.5	0.2				x	x	x	x						
1.9	30	1.5	0.2				x	x	x	x						
2.0	40	2.0	0.2	x	x	x	x	x	x	x	x	x				
2.1	40	2.0	0.2				x	x	x	x						
2.2	40	2.0	0.2				x	x	x	x	x	x				
2.3	40	2.0	0.2					x	x	x						
2.4	40	2.0	0.2					x	x	x						
2.5	50	2.0	0.3	x	x	x	x	x	x	x	x	x				
2.6	50	2.0	0.3				x	x	x	x						
2.7	50	2.0	0.3				x	x	x	x	x	x				
2.8	50	2.0	0.3					x	x	x						
2.9	50	2.0	0.3					x	x	x						
3.0	60	3.0	0.3	x	x	x	x	x	x	x	x	x	x	x	x	x
3.1	60	3.0	0.3				x	x	x	x	x					
3.2	60	3.0	0.3				x	x	x	x	x	x	x			
3.3	60	3.0	0.3					x	x	x						
3.4	60	3.0	0.3						x	x						
3.5	70	3.0	0.3			x	x	x	x	x	x	x	x	x	x	x
3.6	70	3.0	0.3				x	x	x	x	x					
3.7	70	3.0	0.3				x	x	x	x	x	x	x			
3.8	70	3.0	0.3						x	x						
3.9	70	3.0	0.3						x	x						
4.0	80	3.0	0.3	x	x	x	x	x	x	x	x	x	x	x	x	x
4.1	80	3.0	0.3				x	x	x	x						
4.2	80	3.0	0.3				x	x	x	x	x	x	x	x		
4.3	80	3.0	0.3						x	x						
4.4	80	3.0	0.3						x	x						
4.5	80	3.0	0.3				x	x	x	x	x	x	x	x		
4.6	80	3.0	0.3				x	x	x	x	x					
4.7	80	3.0	0.3						x	x						
4.8	80	3.0	0.3						x	x						
4.9	80	3.0	0.3						x	x						

Wypychacze do form wtryskowych

WYPYCHACZE HARTOWANE Z ŁBEM CYLINDRYCZNYM

EJECTOR PINS HARDENED WITH CYLINDRICAL HEAD

DIN 1530AH / ISO 6751

ECT

Materiał / Material

WS - 1.2510
 łeb odpreżony
 Trzpień szlifowany
 Head annealed.
 Shaft through hardened,
 fine ground finished.

Twardość / Hardness

Trzpień / Shaft 60±2 HRC
 Łeb / Head 45±5 HRC

Warunki pracy / working conditions

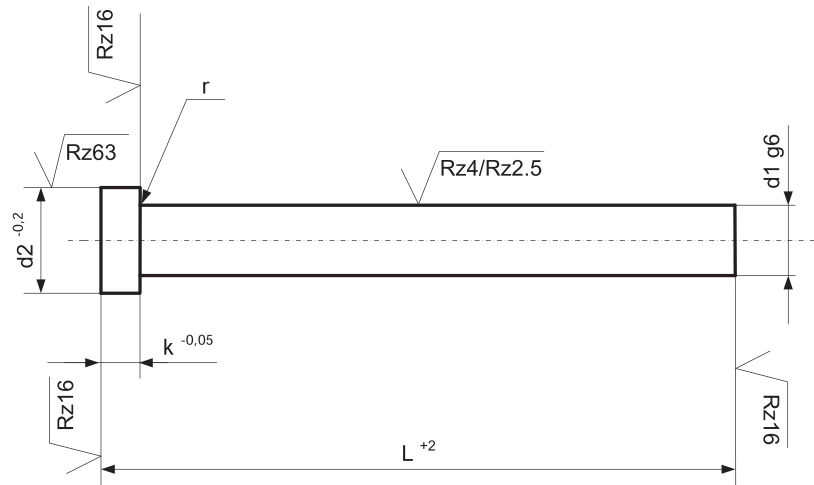
Odporność temp./ Temp. resistance: 220 °C

Jak zamówić / How to order

Symbol: ECT
 +
 d1: 10,0
 +
 L: 500

ECT.1000.0500

Inne wymiary na żądanie
 Other dimensions on demand



d1	d2	k	r	L +2															
				40	63	80	100	125	160	200	250	315	400	500	630	800			
5.0	100	3.0	0.3	x	x	x	x	x	x	x	x	x	x	x					
5.1	100	3.0	0.3				x	x	x	x	x								
5.2	100	3.0	0.3				x	x	x	x	x	x	x						
5.3	100	3.0	0.3						x	x	x								
5.4	100	3.0	0.3						x	x									
5.5	100	3.0	0.3				x	x	x	x	x	x	x						
5.6	100	3.0	0.3						x										
5.7	100	3.0	0.3						x										
5.8	100	3.0	0.3						x		x								
5.9	100	3.0	0.3						x		x								
6.0	120	5.0	0.5	x	x	x	x	x	x	x	x	x	x	x					
6.1	120	5.0	0.5				x	x	x	x	x								
6.2	120	5.0	0.5				x	x	x	x	x	x	x						
6.5	120	5.0	0.5				x	x	x	x	x	x	x						
7.0	120	5.0	0.5				x	x	x	x	x	x	x	x					
7.2	120	5.0	0.5					x		x									
7.5	120	5.0	0.5				x	x	x	x	x								
8.0	140	5.0	0.5	x	x	x	x	x	x	x	x	x	x	x	x	x			
8.2	140	5.0	0.5				x	x	x	x	x	x	x						
8.5	140	5.0	0.5				x	x	x	x	x	x	x						
9.0	140	5.0	0.5				x	x	x	x	x	x	x						
9.5	140	5.0	0.5				x	x	x	x		x	x						
10.0	160	5.0	0.5		x	x	x	x	x	x	x	x	x	x	x	x			
10.2	160	5.0	0.5				x	x	x	x	x	x	x						
10.5	160	5.0	0.5				x	x	x	x	x	x	x						
11.0	160	5.0	0.5				x	x	x	x	x	x	x						
12.0	180	7.0	0.8			x	x	x	x	x	x	x	x	x	x	x			
12.2	180	7.0	0.8				x	x	x	x	x	x	x						
12.5	180	7.0	0.8				x	x	x	x	x	x	x						
13.0	180	7.0	0.8					x	x	x	x	x	x						
14.0	220	7.0	0.8				x	x	x	x	x	x	x	x					
16.0	220	7.0	0.8				x	x	x	x	x	x	x	x	x	x			
18.0	240	7.0	0.8				x	x	x	x	x	x	x						
20.0	260	8.0	1.0				x	x	x	x	x	x	x	x					

Wypychacze do form wtryskowych