

PODKŁADKI OKRĄGŁE

FLAT WASHERS

ISO 7089 / DIN 125

FW

Klasa / Class

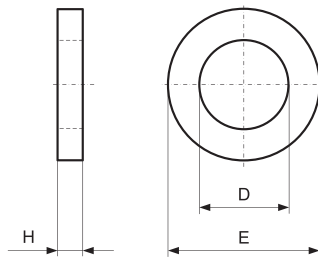
140HV/200HV

Jak zamówić / How to order

Symbol: FW + M:
M: M4

FW.040

Inne wymiary na żądanie
Other dimensions on demand



D	2.2	3.2	4.3	5.3	6.4	7.4	8.4	10.5	13	15	17	19	21	23	25	28	31	34	37	40	43	46	50	54	58	62	66	74
E	5	7	9	10	12	14	16	20	24	28	30	34	37	39	44	50	56	60	66	72	78	85	92	98	105	110	115	125
H	0.3	0.5	0.8	1	1.6	1.6	1.6	2	2.5	2.5	3	3	3	3	4	4	4	5	5	6	7	7	8	8	9	9	9	10
M	M2	M3	M4	M5	M6	M7	M8	M10	M12	M14	M16	M18	M20	M22	M24	M27	M30	M33	M36	M39	M42	M45	M48	M52	M56	M60	M64	M72
	X	X	X	X	X	X	X	X	X	X	X	X	X	X	X	X	X	X	X	X	X	X	X	X	X	X	X	X

PODKŁADKI OKRĄGŁE POWIĘKSZONE

FLAT WASHERS LARGE DIAMETER

ISO 7093 / DIN 9021

FWP

Klasa / Class

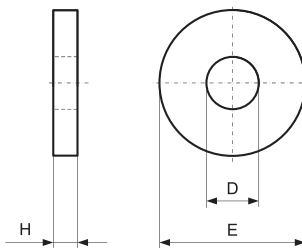
140HV/200HV

Jak zamówić / How to order

Symbol: FWP + M:
M: M6

FWP.060

Inne wymiary na żądanie
Other dimensions on demand



D	3.2	4.3	5.3	6.4	7.4	8.4	10.5	13	15	17	20	22	26	33	39
E	9	12	15	18	22	24	30	37	44	50	56	60	72	92	110
H	0.8	1	1.2	1.6	2	2	2.5	3	3	3	4	4	5	6	8
M	M3	M4	M5	M6	M7	M8	M10	M12	M14	M16	M18	M20	M24	M30	M36
	X	X	X	X	X	X	X	X	X	X	X	X	X	X	X

PODKŁADKI SPRĘŻYSTE

SPRING WASHERS

DIN 127B

SW

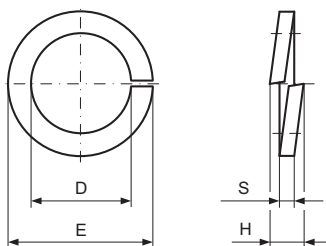
Klasa / Class

5.8

Jak zamówić / How to order

Symbol: SW.0100

Inne wymiary na żądanie
Other dimensions on demand



Symbol	M	D	E	S	H
SW.020	M2	2.1	4.4	0.5	1.2
SW.025	M2.5	2.6	5.1	0.6	1.4
SW.030	M3	3.1	6.2	0.8	1.9
SW.035	M3.5	3.6	6.7	0.8	1.9
SW.040	M4	4.1	7.6	0.9	2.1
SW.050	M5	5.1	9.2	1.2	2.8
SW.060	M6	6.1	11.8	1.6	3.8
SW.070	M7	7.1	12.8	1.6	3.8
SW.080	M8	8.1	14.8	2	4.7

Symbol	M	D	E	S	H
SW.100	M10	10.2	18.1	2.2	5.2
SW.120	M12	12.2	21.1	2.5	5.9
SW.140	M14	14.2	24.1	3	7.1
SW.160	M16	16.2	27.4	3.5	8.3
SW.180	M18	18.2	29.4	3.5	8.3
SW.200	M20	20.2	33.6	4	9.4
SW.220	M22	22.5	35.9	4	9.4
SW.240	M24	24.5	40	5	11.8
SW.270	M27	27.5	43	5	11.8

Symbol	M	D	E	S	H
SW.300	M30	30.5	48.2	6	14.2
SW.330	M33	33.5	55.2	6	14.2
SW.360	M36	36.5	58.2	6	14.2
SW.390	M39	39.5	61.2	6	14.2
SW.420	M42	42.5	68.2	7	16.5
SW.450	M45	45.5	71.2	7	16.5
SW.480	M48	49	75	7	16.5
SW.520	M52	53	83	8	18.9
SW.560	M56	57	87	8	18.9