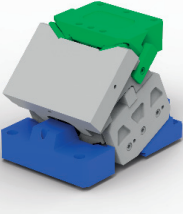




# SUWAKI DODATKOWA SPECYFIKACJA

## CAM UNITS ADDITIONAL SPECIFICATION TABLE



Typ Type	Symbol: Catalog No:	Powierzchnia Montażowa Mounting Face		Kąt Pracy Working Angle	Skok Stroke	Szerokość Całkowita Overall Width	Wysokość Zamknięcia Shut Height	Siła Sprężyny Spring Force (N)		Siła Powrotu Return Force (N)	Max Siła Robocza Max Working Force (kN)	Siła Wyciągu Extraction Force (kN)	Waga Weight (kg)		
		Szerokość Width	Początkowa Initial					Końcowa Final							
	K802-06-085.70	85	70	95,0	140	225		230,000	11900	285	11,9	28			
	K802-06-085.75		75	95,1					12000	293	12,0				
	K802-06-110.00	110	0	30,9	160	275		360,000	11300	357	11,4				
	K802-06-110.05		5	34,1					366						
	K802-06-110.10		10	34,5	12100				369	12,2					
	K802-06-110.15		15	38,1					372						
	K802-06-110.20		20	41,8	12800				375	12,8					
	K802-06-110.25		25	43,4					378						
	K802-06-110.30		30	48,0	13400				381	13,4					
	K802-06-110.35		35	50,8					384						
	K802-06-110.40		40	56,8	13600				387	13,6					
	K802-06-110.45		45	61,5					390						
	K802-06-110.50		50	48,2	14000				393	14,0					
	K802-06-110.55		55	54,1					396						
	K802-06-110.60		60	63,8	14300				399	14,3					
	K802-06-110.65		65	75,4					402						
	K802-06-110.70		70	95,0	14400				405	14,4					
	K802-06-110.75		75	95,1					407						
	K802-06-150.00		150	0	32,1				160	300		480,000	16400	421	16,4
	K802-06-150.05			5	35,5				180				435	17,5	
	K802-06-150.10	10		35,9	448										
	K802-06-150.15	15		39,7	18400	476	18,4								
	K802-06-150.20	20		43,6		489									
	K802-06-150.25	25		45,2	19100	503	19,2								
	K802-06-150.30	30		50,0		517									
	K802-06-150.35	35		52,9	19800	528	19,8								
	K802-06-150.40	40		59,2		540									
	K802-06-150.45	45		64,1	20300	551	20,3								
	K802-06-150.50	50		73,1		558									
	K802-06-150.55	55		81,9	20500	565	20,5								
	K802-06-150.60	60		96,6		571									
	K802-06-150.65	65		91,4	20700	578	20,7								
	K802-06-150.70	70		84,7		584									
	K802-06-150.75	75		76,1	16100	584	20,6								
	K802-06-180.00	180		0		32,1		160	500,000					16100	474
	K802-06-180.05			5	35,5	180	488								
	K802-06-180.10		10	35,9	17300		503	17,3							
	K802-06-180.15		15	39,7		518									
	K802-06-180.20		20	43,6	18200	533	18,2								
	K802-06-180.25		25	45,2		542									
	K802-06-180.30		30	50,0	18900	543	18,9								
	K802-06-180.35		35	52,9		550									
	K802-06-180.40		40	59,2	19500	557	19,5								
	K802-06-180.45		45	64,1		564									
	K802-06-180.50		50	73,1	20000	571	20,0								
	K802-06-180.55		55	81,9		571									

# SUWAKI DODATKOWA SPECYFIKACJA

## CAM UNITS ADDITIONAL SPECIFICATION TABLE



Typ Type	Symbol: Catalog No:	Powierzchnia Montażowa Mounting Face		Kąt Pracy Working Angle	Skok Stroke	Szerokość Całkowita Overall Width	Wysokość Zamknięcia Shut Height	Siła Sprężyny Spring Force (N)		Siła Powrotu Return Force (N)	Max Siła Robocza Max Working Force (kN)	Siła Wyciągu Extraction Force (kN)	Waga Weight (kg)
		Szerokość Width	Początkowa Initial					Końcowa Final					
	K802-06-180.60	180	60	96,6	200	300	-	-	500,000	20000	578	20,0	80
	K802-06-180.65									20200	584	20,2	
	K802-06-180.70									20400	591	20,4	
	K802-06-180.75									20300	598	20,3	
	K802-06-220.00	220	0	32,1	160					18800	635	18,8	96
	K802-06-220.05									19300	648	19,3	
	K802-06-220.10									20100	661	20,1	
	K802-06-220.15									20900	674	20,9	
	K802-06-220.20				21800					687	21,8		
	K802-06-220.25				22700					700	22,7		
	K802-06-220.30				24100					714	24,1		
	K802-06-220.35				24800					727	24,8		
	K802-06-220.40				26800					729	26,8		
	K802-06-220.45				27500					728	27,5		
	K802-06-220.50				30400					729	30,4		
	K802-06-220.55				31100					730	31,1		
	K802-06-220.60				35300					730	35,3		
	K802-06-220.65				37100					731	37,1		
	K802-06-220.70				43900					731	43,9		
	K802-06-220.75				44400					732	44,5		
	K802-06-260.00	260	0	32,1	160					30400	536	30,5	112
	K802-06-260.05									30700	564	30,8	
	K802-06-260.10									31300	593	31,3	
	K802-06-260.15									31700	621	31,7	
	K802-06-260.20				32300					650	32,4		
	K802-06-260.25				32700					673	32,7		
	K802-06-260.30				33700					690	33,7		
	K802-06-260.35				33900					708	33,9		
	K802-06-260.40				35200					737	35,2		
	K802-06-260.45				744					747	37,0		
	K802-06-260.50				37000					747	37,0		
	K802-06-260.55				36900					751	36,9		
	K802-06-260.60				39500					755	39,5		
	K802-06-260.65				40700					759	40,7		
	K802-06-260.70				45700					763	45,7		
	K802-06-260.75				45300					767	45,3		
	K802-06-330.00	330	0	37,3	180					63900	1006	63,9	227
	K802-06-330.05									64600	1005	64,6	
	K802-06-330.10									66600	1005	66,6	
	K802-06-330.15									67800	1007	67,8	
	K802-06-330.20				69500					1007	69,5		
	K802-06-330.25				71200					1009	71,2		
	K802-06-330.30				73700					1010	73,7		
	K802-06-330.35				75100					1012	75,1		
	K802-06-330.40				78500					1013	78,5		
K802-06-330.45	79600				1014	79,6							

# SUWAKI DODATKOWA SPECYFIKACJA

## CAM UNITS ADDITIONAL SPECIFICATION TABLE

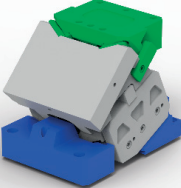


Typ Type	Symbol: Catalog No:	Powierzchnia Montażowa Mounting Face	Kąt Pracy Working Angle	Stok Stroke	Szerokość Całkowita Overall Width	Wysokość Zamknięcia Shut Height	Siła Sprężyny Spring Force (N)		Siła Powrotu Return Force (N)	Max Siła Robocza Max Working Force (kN)	Siła Wyciągu Extraction Force (kN)	Waga Weight (kg)				
							Początkowa Initial	Końcowa Final								
	K802-06-330.50	330	50	84,8	220	375	101,000		84400	1015	84,4	227				
	K802-06-330.55		55	95,0					85100	1016	85,1					
	K802-06-330.60		60	112,1					91800	1017	91,8					
	K802-06-330.65		65	102,9					94800	1018	94,8					
	K802-06-330.70		70	127,1					94900	1019	94,9					
	K802-06-330.75		75	114,2					95900	1020	95,9					
	K802-06-400.00	400	0	37,3	180				273	105,000		63900	1055	63,9		
	K802-06-400.05		5	41,2								64600		64,6		
	K802-06-400.10		10	41,6								66600	66,6			
	K802-06-400.15		15	46,0	67800							67,8				
	K802-06-400.20		20	50,6												
	K802-06-400.25		25	52,4	71200							71,2				
	K802-06-400.30		30	58,0												
	K802-06-400.35		35	61,3	75100		75,1									
	K802-06-400.40		40	68,6												
	K802-06-400.45		45	74,3	79600		79,6									
	K802-06-400.50		50	84,8												
	K802-06-400.55		55	95,0	84400		84,4									
	K802-06-400.60		60	112,1												
	K802-06-400.65		65	102,9	91800		91,8									
	K802-06-400.70		70	127,9												
	K802-06-400.75		75	114,2	94800		1053	94,8								
	K802-06-500.00		500	0	37,3		180	355				115,500		87000		87,0
	K802-06-500.05			5	41,2									85700		85,7
	K802-06-500.10	10		41,6	83800				83,8							
	K802-06-500.15	15		46,0												
	K802-06-500.20	20		50,6	81200		81,2									
	K802-06-500.25	25		52,4												
	K802-06-500.30	30		58,0	78000		78,0									
	K802-06-500.35	35		61,3												
	K802-06-500.40	40		68,6	74100		74,1									
	K802-06-500.45	45		74,3												
	K802-06-500.50	50		84,8	69300		69,3									
	K802-06-500.55	55		95,0												
	K802-06-500.60	60		112,1	64500		64,5									
	K802-06-500.65	65		102,9												
	K802-06-500.70	70		127,9	66800		66,8									
	K802-06-500.75	75		114,2												
	K802-06-600.00	600		0	37,3		200		436	120,000				98000		98,1
	K802-06-600.05			5	41,2									98500		1202
	K802-06-600.10		10	41,6	98100		98,2									
	K802-06-600.15		15	46,0												
K802-06-600.20	20		50,6	97100	97,1											
K802-06-600.25	25		52,4													
K802-06-600.30	30		58,0													
K802-06-600.35	35		61,3	250												

# SUWAKI DODATKOWA SPECYFIKACJA

## CAM UNITS ADDITIONAL SPECIFICATION TABLE

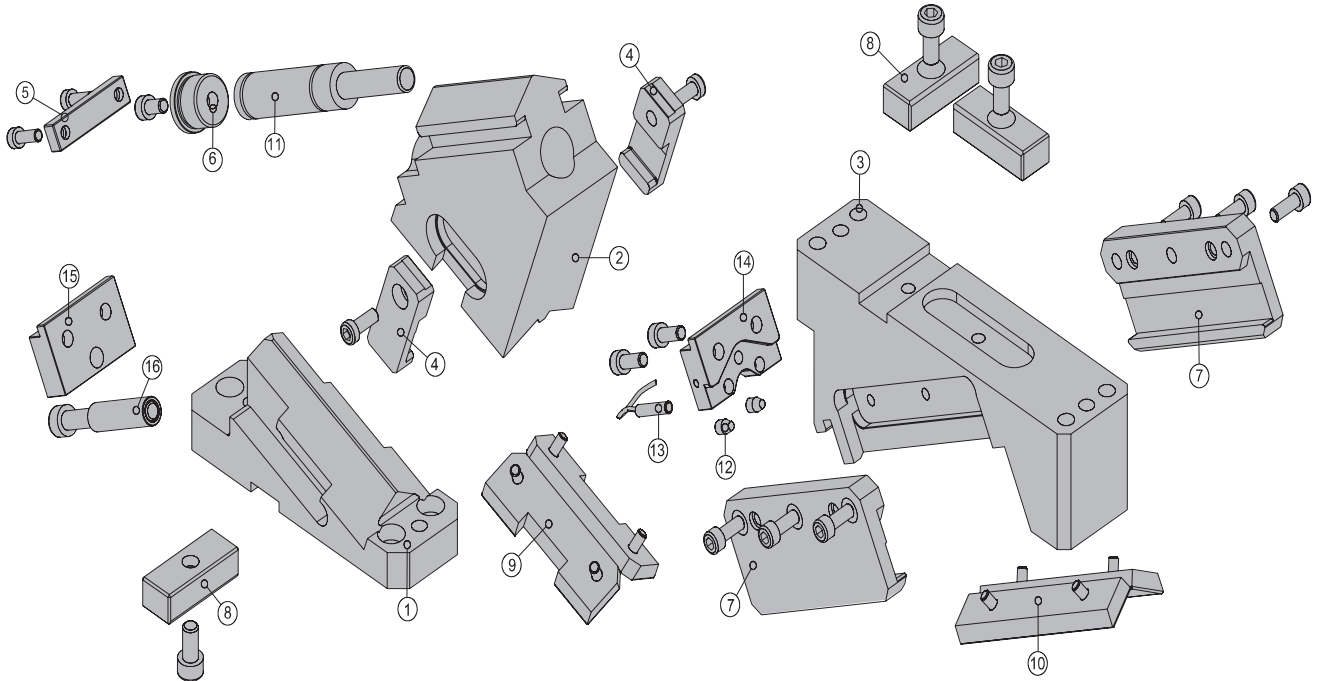


Typ Type	Symbol: Catalog No:	Powierzchnia Montażowa Mounting Face	Kąt Pracy Working Angle	Skok Stroke	Szerokość Całkowita Overall Width	Wysokość Zamknięcia Shut Height	Siła Sprężyny Spring Force (N)		Siła Powrotu Return Force (N)	Max Siła Robocza Max Working Force (kN)	Siła Wyciągu Extraction Force (kN)	Waga Weight (kg)
		Szerokość Width					Początkowa Initial	Końcowa Final				
	K802-06-600.40	600	40	68,6	250	400	-	120,000	97100	1202	97,1	436
	K802-06-600.45		45	74,3					95200		95,2	
	K802-06-600.50		50	84,8					92600		92,6	
	K802-06-600.55		55	95,0	88700				88,8			
	K802-06-600.60		60	112,1	84900				84,9			
	K802-06-600.65		65	102,9	84200				84,2			
	K802-06-600.70		70	127,1								
	K802-06-600.75		75	114,2								

# SUWAKI PODWIESZANE

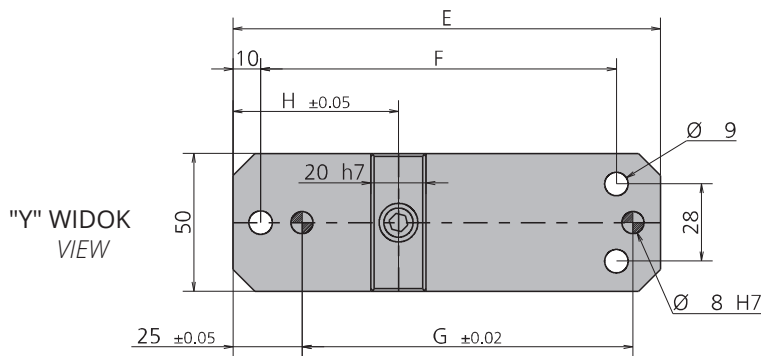
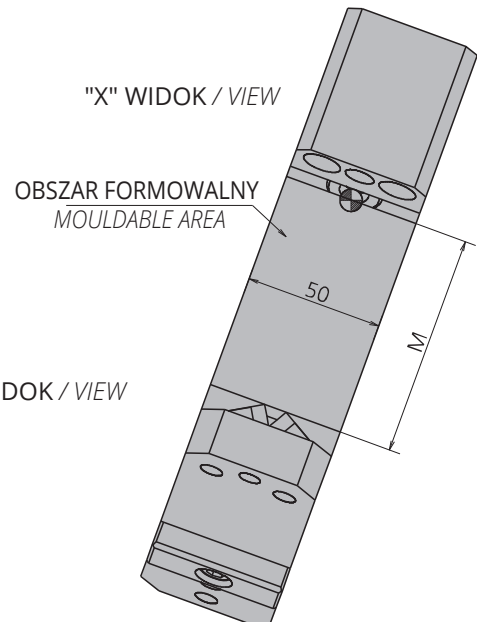
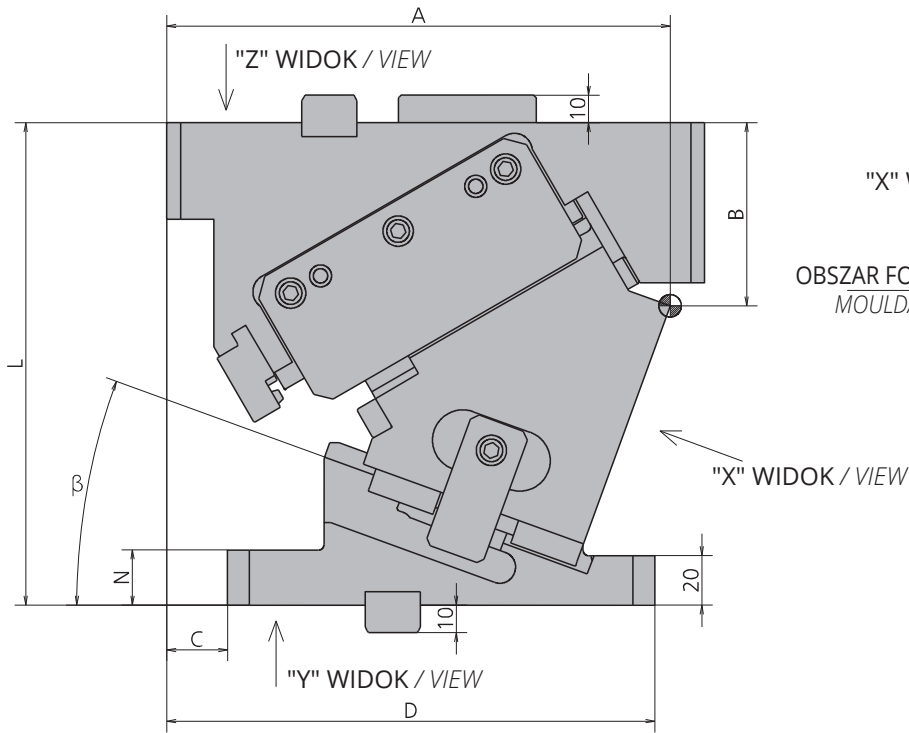
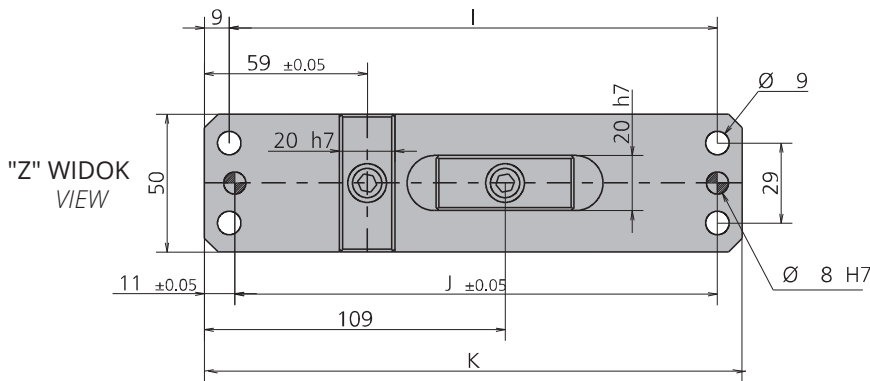
AERIAL CAM UNITS

# K802-06-50 (00 ~ 75mm)



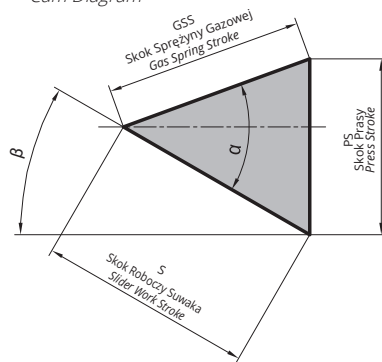
POZ. POS.	OPIS DESCRIPTION	ILOŚĆ QTY
001	KLIN / WEDGE	1
002	SUWAK / SLIDER	1
003	KORPUS SUWAKA / CAM BODY	1
004	MOCOWANIE WSPORNIKA / BRACKET ATTACHMENTS	2
005	PŁYTA / PLATE	1
006	DYSTANS / SPACER	1
007	WSPORNIK / BRACKET	2
008	WPUST / KEY	3
009	PŁYTKA ŚCIERALNA / WEAR PLATE	2
010	PŁYTKA ŚCIERALNA / WEAR PLATE	2
011	SPRĘŻYNA GAZOWA / NITROGEN CYLINDER	1
012	ZDERZAK / BUMP STOP	2
013	CZUJNIK BEZPIECZEŃSTWA / SECURITY SENSOR	1*OPCJA / OPTION
014	PŁYTA / PLATE	1
015	PŁYTA / PLATE	1
016	WYŁĄCZNIKI KRAŃCOWE / LIMIT SWITCHES	1

Suwaki GSB



Symbol: Catalog No:	$\beta$	A	B	C	D	E	F	G	H	I	J	K	L	M	N
K802-06-050.00	0°	170	57	38	193	155	129	120	60	162	160	180	175	75	20
K802-06-050.05	5°	173.89	60.44	35	190	155	129	120	60	167	165	185	175	75	20
K802-06-050.10	10°	177.66	64.77	32	187	155	129	120	60	172	170	190	175	75	20
K802-06-050.15	15°	180.31	67.99	28	183	155	129	120	60	177	175	195	175	75	20
K802-06-050.20	20°	180.87	71.09	22	177	155	129	120	60	177	175	195	175	75	20
K802-06-050.25	25°	180.34	74.06	16	171	155	129	120	60	177	175	195	175	75	20
K802-06-050.30	30°	180.72	76.89	10	165	155	129	120	60	179	177	197	175	75	20
K802-06-050.35	35°	179.04	79.58	3	158	155	129	120	60	179	177	197	175	75	20
K802-06-050.40	40°	176.31	83.12	-9	146	155	129	120	60	179	177	197	175	75	20
K802-06-050.45	45°	172.54	85.51	-18	137	155	129	120	60	177	175	195	175	75	20
K802-06-050.50	50°	161.73	93.74	-33	122	155	129	120	60	172	170	190	180	75	20
K802-06-050.55	55°	168.28	97.72	-39	116	155	129	120	45	172	170	190	185	80	80
K802-06-050.60	60°	173.67	104.06	-49	106	155	129	120	45	172	170	190	190	90	80
K802-06-050.65	65°	169.28	113.98	-53	92	145	119	110	45	172	170	190	195	95	80
K802-06-050.70	70°	166.95	124.76	-63	72	135	109	100	45	172	170	190	195	105	90
K802-06-050.75	75°	165.42	134.11	-68	67	135	109	100	45	172	170	190	195	105	90

Schemat Suwaka  
Cam Diagram



SENSOR Poz No:13



$\alpha$	GSS	S	PS
50°	45,00	28,90	34,47
		31,90	34,60
		35,00	35,00
		38,20	35,69
		41,50	36,68
		45,00	38,04
		48,80	39,80
		53,10	42,08
		57,80	45,00
		63,40	48,75
40,00	62,20	47,67	
55°	34,00	59,30	48,56
60°	30,00	60,00	51,96
65°	25,00	59,20	53,61
70°	20,00	58,50	54,95
75°	15,00	58,00	55,98

Sprężyna Spring	$\theta$	Ilość QTY	Model Model
GS	0-50	1	RV170-050-C
	55-75		RV170-038-C

Suwaki GSB

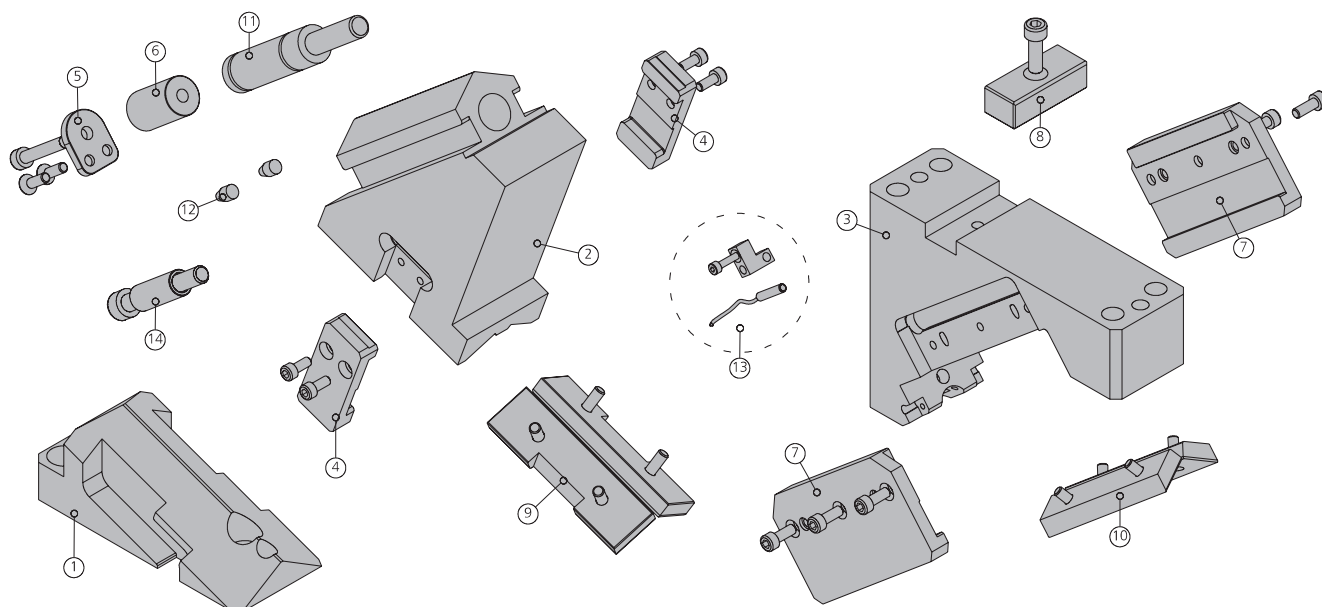
**Przykład Zamówienia:**  
Order Example:

W=50,  $\theta$ =25, GS

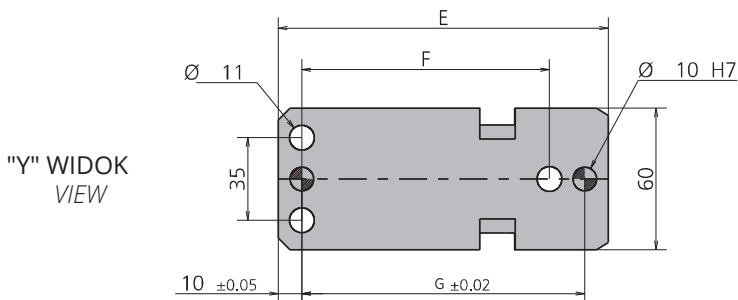
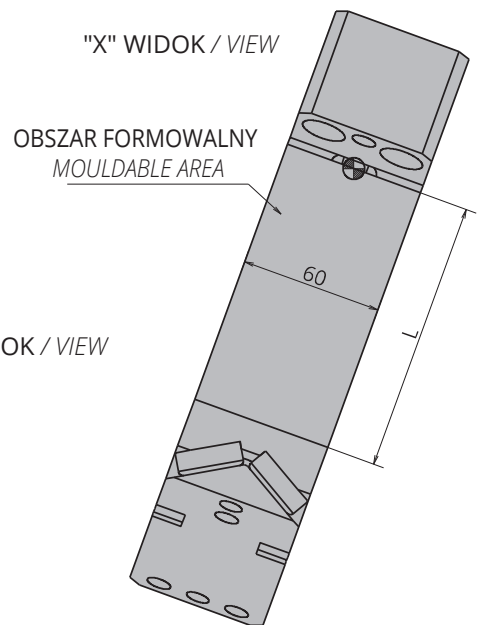
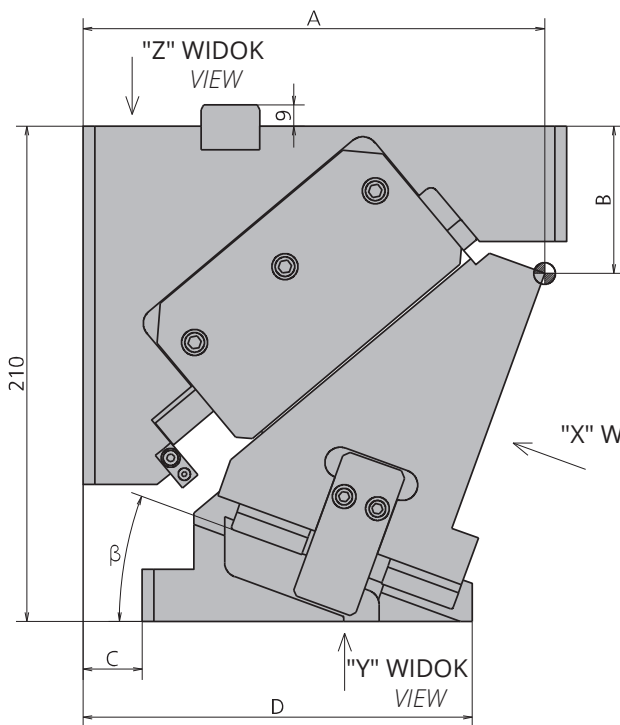
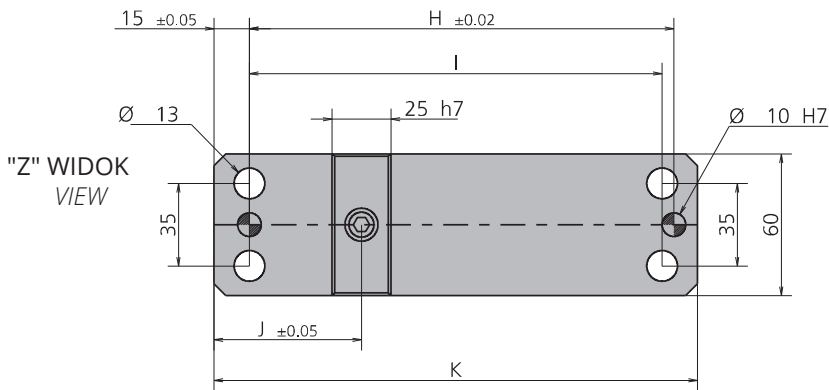
Symbol: K802-06-050-25-GS

Symbol Opcji (SENSOR): 9003.0002

Option Code



POZ. POS.	OPIS DESCRIPTION	ILOŚĆ QTY
001	KLIN / WEDGE	1
002	SUWAK / SLIDER	1
003	KORPUS SUWAKA / CAM BODY	1
004	MOCOWANIE WSPORNIKA / BRACKET ATTACHMENTS	2
005	PŁYTA / PLATE	1
006	DYSTANS / SPACER	1
007	WSPORNIK / BRACKET	2
008	WPUST / KEY	1
009	PŁYTKA ŚCIERALNA / WEAR PLATE	2
010	PŁYTKA ŚCIERALNA / WEAR PLATE	2
011	SPRĘŻYNA GAZOWA / NITROGEN CYLINDER	1
012	ZDERZAK / BUMP STOP	2
013	ZESTAW CZUJNIK BEZPIECZEŃSTWA / SECURITY SENSOR KIT	1*OPCJA / OPTION
014	WYŁĄCZNIKI KRAŃCOWE / LIMIT SWITCHES	1

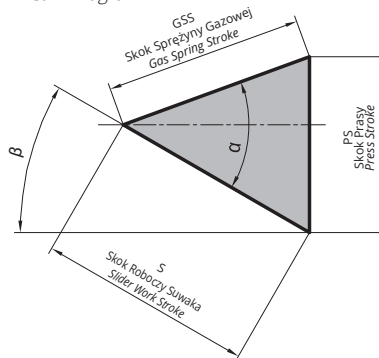




Symbol: Catalog No:	$\beta$	A	B	C	D	E	F	G	H	I	J	K	L
K802-06-060.00	0°	175	55	25	180	155	105	120	180	175	62.5	205	110
K802-06-060.05	5°	179.26	57.37	25	175	150	105	120	180	175	62.5	205	110
K802-06-060.10	10°	183.30	60.10	25	170	145	105	120	180	175	62.5	205	110
K802-06-060.15	15°	189.68	63.51	25	165	140	105	120	180	175	62.5	205	110
K802-06-060.20	20°	190.59	76.57	25	165	140	105	120	180	175	62.5	205	115
K802-06-060.25	25°	193.79	80.25	25	150	125	80	95	180	175	62.5	205	115
K802-06-060.30	30°	196.65	84.20	25	150	125	80	95	180	175	62.5	205	115
K802-06-060.35	35°	199.16	88.38	25	140	115	80	95	180	175	62.5	205	115
K802-06-060.40	40°	198.08	96.60	10	120	110	65	80	195	190	62.5	220	115
K802-06-060.45	45°	225.96	104.39	40	145	105	65	80	210	205	92.5	235	115
K802-06-060.50	50°	211.71	113.44	10	115	105	50	65	195	190	77.5	220	115
K802-06-060.55	55°	212.11	117.54	10	115	105	50	70	195	190	77.5	220	115
K802-06-060.60	60°	203.48	126.65	10	102	92	50	65	195	190	77.5	220	115
K802-06-060.65	65°	202.75	129.98	10	95	85	50	65	195	190	77.5	220	115
K802-06-060.70	70°	205.54	146.39	10	95	85	20	35	195	190	62.5	220	115
K802-06-060.75	75°	204.77	151.21	10	90	80	20	35	210	205	62.5	235	115

$\alpha$	GSS	S	PS
50°	30,00	19,28	22,98
		21,29	23,07
21,54		24,95	
23,79		25,44	
24,46		27,65	
27,12		28,67	
30,00		30,00	
31,72		33,19	
35,49		35,49	
38,45		39,87	
70°	43,86	43,86	
	49,15	50,52	
75°	57,96	57,96	
	68,57	69,91	
85°	25,00	70,60	72,82
	20,00	76,10	76,98

Schemat Suwaka  
Cam Diagram



Suwaki GSB

Sprężyna Spring	$\theta$	Ilość QTY	Model Model
GS	0-30	1	RV170-050-C
	35-75		RV170-038-C

SENSOR Poz No:13



Przykład Zamówienia:  
Order Example:

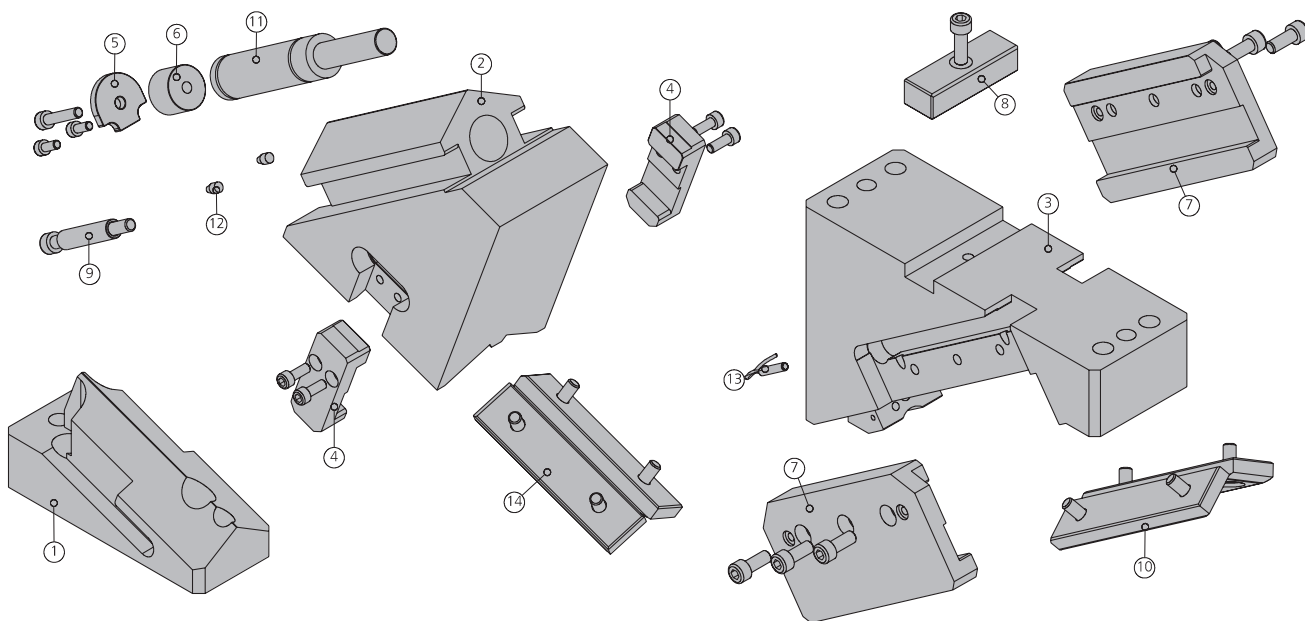
W=60,  $\theta$ =25, GS

Symbol: K802-06-060-25-GS    Symbol Opcji (SENSOR): 9003.0002  
Option Code

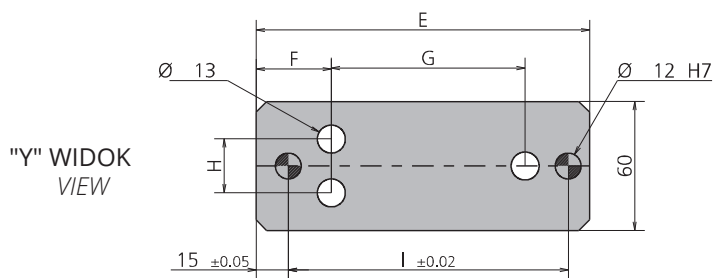
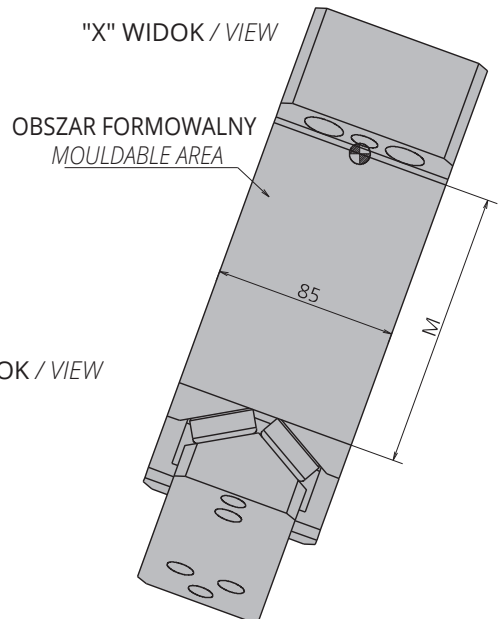
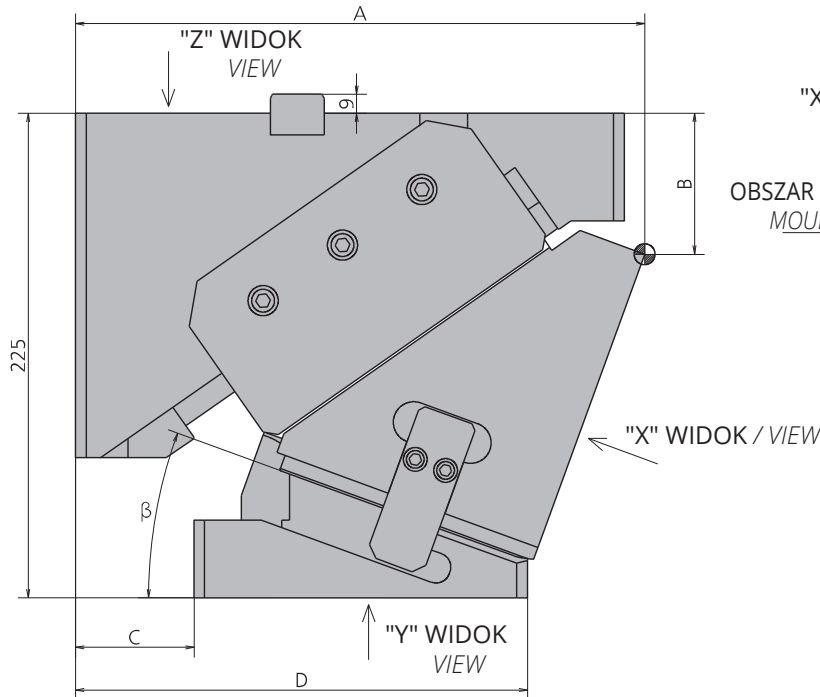
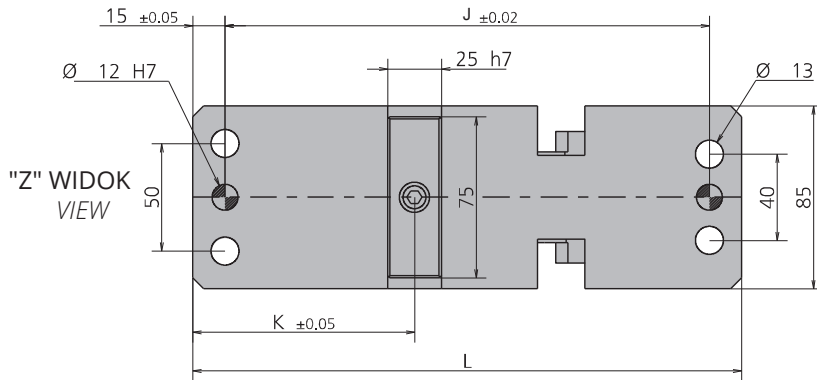
# SUWAKI PODWIESZANE

AERIAL CAM UNITS

## K802-06-85 (00 ~ 75mm)



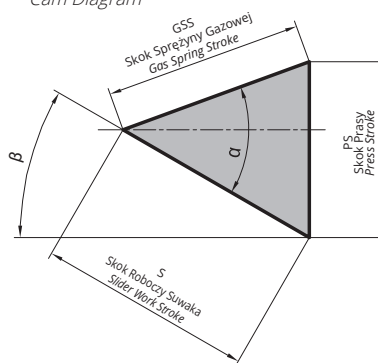
POZ. POS.	OPIS DESCRIPTION	ILOŚĆ QTY
001	KLIN / WEDGE	1
002	SUWAK / SLIDER	1
003	KORPUS SUWAKA / CAM BODY	1
004	MOCOWANIE WSPORNIKA / BRACKET ATTACHMENTS	2
005	PŁYTA / PLATE	1
006	DYSTANS / SPACER	1
007	WSPORNIK / BRACKET	2
008	WPUST / KEY	1
009	WYŁĄCZNIKI KRAŃCOWE / LIMIT SWITCHES	1
010	PŁYTKA ŚCIERALNA / WEAR PLATE	2
011	SPRĘŻYNA GAZOWA / NITROGEN CYLINDER	1
012	ZDERZAK / BUMP STOP	2
013	CZUJNIK BEZPIECZEŃSTWA / SECURITY SENSOR	1*OPCJA / OPTION
014	PŁYTKA ŚCIERALNA / WEAR PLATE	2



Symbol: Catalog No.	$\beta$	A	B	C	D	E	F	G	H	I	J	K	L	M
K802-06-085.00	0°	238	60	55	230	175	35	90	25	130	225	82	255	130
K802-06-085.05	5°	243.28	64.18	55	225	170	35	90	25	130	225	88	255	130
K802-06-085.10	10°	247.73	73.75	55	215	160	35	90	25	130	225	88	255	135
K802-06-085.15	15°	252.64	78.77	55	210	155	35	90	25	130	225	97	255	135
K802-06-085.20	20°	259.24	79.51	55	210	155	35	90	25	130	225	103	255	135
K802-06-085.25	25°	262.37	90.08	40	195	155	35	90	25	130	255	103	285	135
K802-06-085.30	30°	272.11	87.71	40	195	155	35	90	25	130	255	112	285	135
K802-06-085.35	35°	277.45	94.87	40	195	155	35	90	25	130	255	112	285	135
K802-06-085.40	40°	282.59	102.49	40	195	155	35	90	25	130	255	122.5	285	135
K802-06-085.45	45°	245.4	117.6	0	150	150	35	70	25	110	235	92	265	135
K802-06-085.50	50°	247.12	127.38	0	135	135	35	70	25	110	235	96.5	265	135
K802-06-085.55	55°	263	126.74	0	135	135	35	70	25	110	235	96.5	265	140
K802-06-085.60	60°	267.02	136.11	0	135	135	35	70	25	110	235	104	265	140
K802-06-085.65	65°	257.06	147.15	0	126	126	35	60	25	100	235	104	265	140
K802-06-085.70	70°	248.86	160.81	5	114	109	15	40	35	60	245	82.5	275	140
K802-06-085.75	75°	251.61	181.07	5	114	109	15	40	35	60	245	82.5	275	140

$\alpha$	GSS	S	PS
50°	48,00	30,85	36,77
		34,07	36,91
55°	48,00	34,46	36,93
		38,07	40,71
60°	48,00	41,84	41,84
		43,38	45,87
65°	48,00	48,00	48,00
		50,75	53,11
70°	33,00	56,79	56,79
		42,30	43,85
75°	33,00	48,24	48,24
		54,06	55,57
80°	25,00	63,75	63,75
		75,42	76,90
85°	25,00	95,13	96,23

Schemat Suwaka  
Cam Diagram

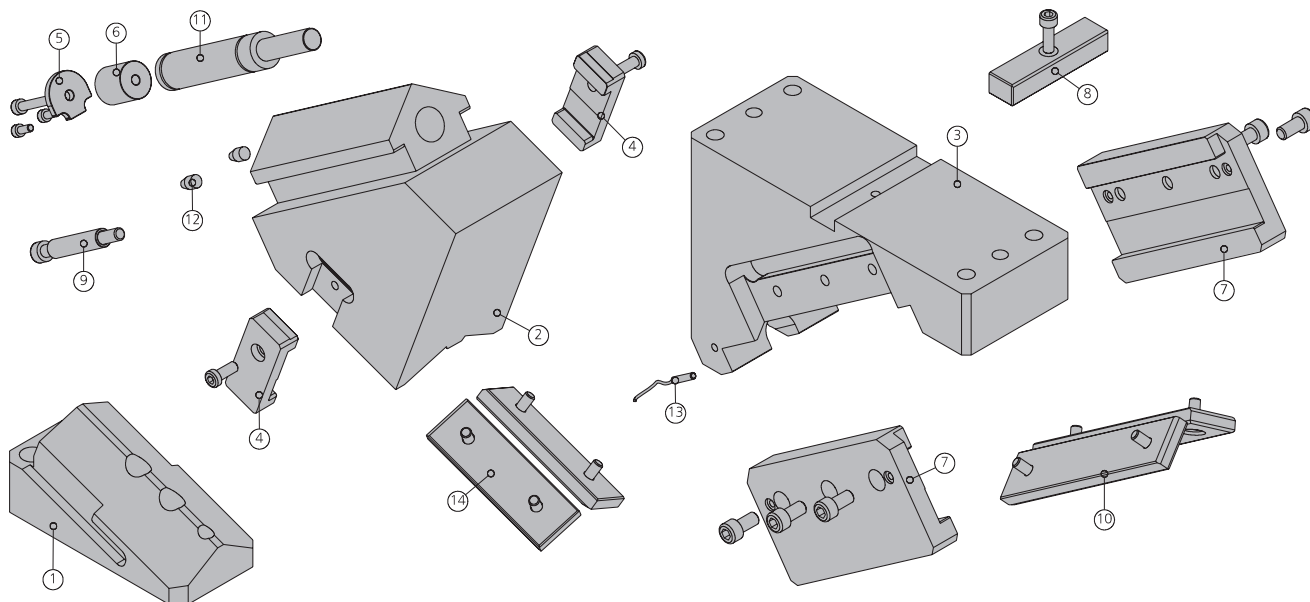


Sprężyna Spring	$\theta$	Ilość QTY	Model Model
GS	0-40	1	RV320-075-C
	45-75		RV320-063-C

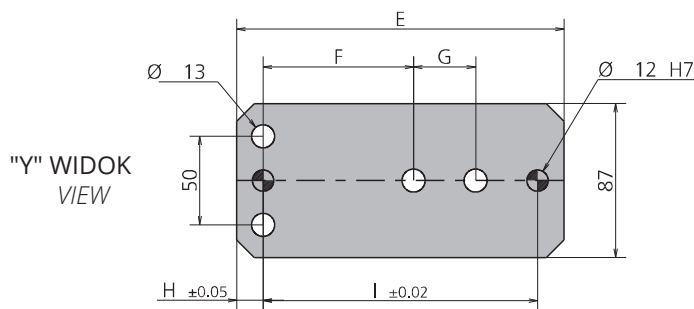
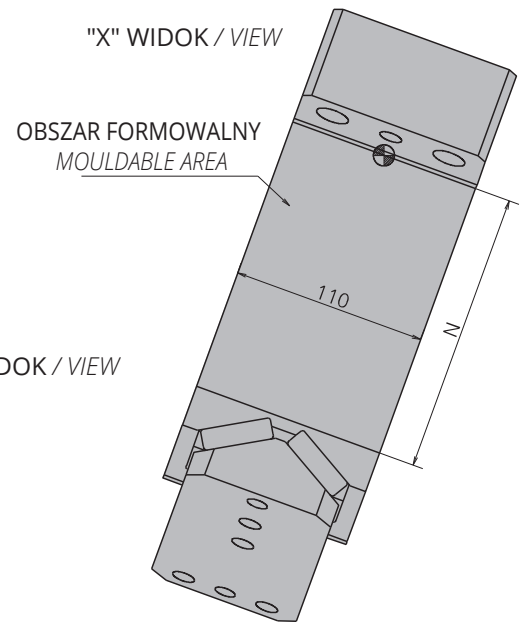
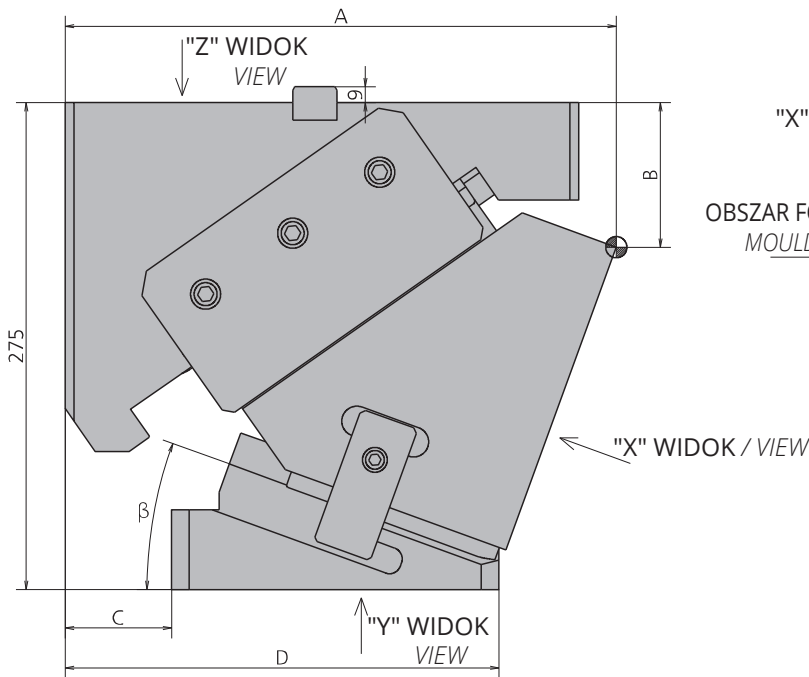
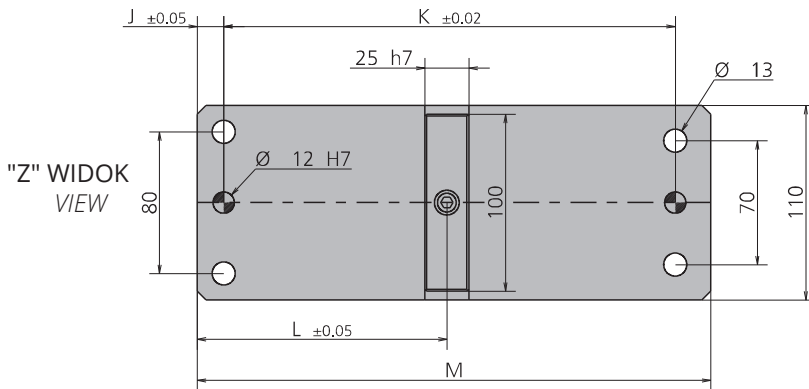
SENSOR Poz No:13



**Przykład Zamówienia:**  
Order Example:  
**W=85,  $\theta$ =25, GS**  
**Symbol: K802-06-085-25-GS    Symbol Opcji (SENSOR): 9003.0002**  
Option Code



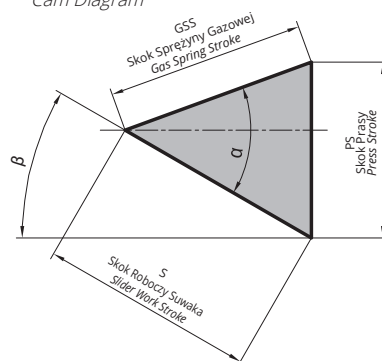
POZ. POS.	OPIS DESCRIPTION	ILOŚĆ QTY
001	KLIN / WEDGE	1
002	SUWAK / SLIDER	1
003	KORPUS SUWAKA / CAM BODY	1
004	MOCOWANIE WSPORNIKA / BRACKET ATTACHMENTS	2
005	PŁYTA / PLATE	1
006	DYSTANS / SPACER	1
007	WSPORNIK / BRACKET	2
008	WPUST / KEY	1
009	WYŁĄCZNIKI KRAŃCOWE / LIMIT SWITCHES	1
010	PŁYTKA ŚCIERALNA / WEAR PLATE	2
011	SPRĘŻYNA GAZOWA / NITROGEN CYLINDER	1
012	ZDERZAK / BUMP STOP	2
013	CZUJNIK BEZPIECZEŃSTWA / SECURITY SENSOR	1*OPCJA / OPTION
014	PŁYTKA ŚCIERALNA / WEAR PLATE	2



Symbol: Catalog No:	$\beta$	A	B	C	D	E	F	G	H	I	J	K	L	M	N
K802-06-110.00	0°	278	70	60	270	210	85	35	15	155	15	255	97.5	290	160
K802-06-110.05	5°	285.45	74.28	60	265	205	85	35	15	155	15	255	117	290	160
K802-06-110.10	10°	292.94	79.21	60	255	195	85	35	15	155	15	255	124.5	290	170
K802-06-110.15	15°	300.41	84.79	60	250	190	85	35	15	155	15	255	133.5	290	170
K802-06-110.20	20°	307.8	91.02	60	245	185	85	35	15	155	15	255	141	290	170
K802-06-110.25	25°	302.93	102.42	50	228	178	40	45	15	135	20	260	140	300	170
K802-06-110.30	30°	309.61	109.72	50	222	172	40	45	15	135	20	260	147.5	300	170
K802-06-110.35	35°	316.06	117.58	50	217	167	40	45	15	135	20	260	155	300	170
K802-06-110.40	40°	322.23	126	50	213	163	40	45	15	135	20	260	162.5	300	170
K802-06-110.45	45°	311.62	131.41	10	193	183	55	45	20	120	15	265	148.5	295	170
K802-06-110.50	50°	309.74	147.6	10	182	172	55	45	20	120	15	265	154.5	295	170
K802-06-110.55	55°	302.27	165.76	10	167	157	55	45	20	120	15	265	175.5	295	170
K802-06-110.60	60°	305.96	174.61	10	165	155	55	45	20	120	15	265	175.5	295	170
K802-06-110.65	65°	285.71	195.11	0	137	137	55	25	20	100	15	265	155.5	295	170
K802-06-110.70	70°	288.18	208.33	0	135	135	55	25	20	100	15	265	155.5	295	170
K802-06-110.75	75°	290.36	211.76	0	134	134	55	25	20	100	15	275	155.5	310	170

$\alpha$	GSS	S	PS
50°	48,00	30,85	36,77
		34,07	36,91
55°	48,00	34,46	39,93
		38,07	40,71
		41,84	41,84
60°	48,00	43,38	45,87
		48,00	48,00
65°	48,00	50,75	53,11
		56,79	56,79
70°	48,00	61,52	63,79
		68,24	68,24
75°	33,00	54,06	55,57
		63,75	63,75
		75,42	76,90
80°	33,00	95,02	95,02
		95,02	95,02
85°	25,00	95,13	96,23

Schemat Suwaka  
Cam Diagram



Sprężyna Spring	$\theta$	Ilość QTY	Model Model
GS	0-45	1	RV320-075-C
	50-75		RV320-063-C

SENSOR Poz No:13



Przykład Zamówienia:  
Order Example:

W=110,  $\theta$ =25, GS

Symbol: K802-06-110-25-GS

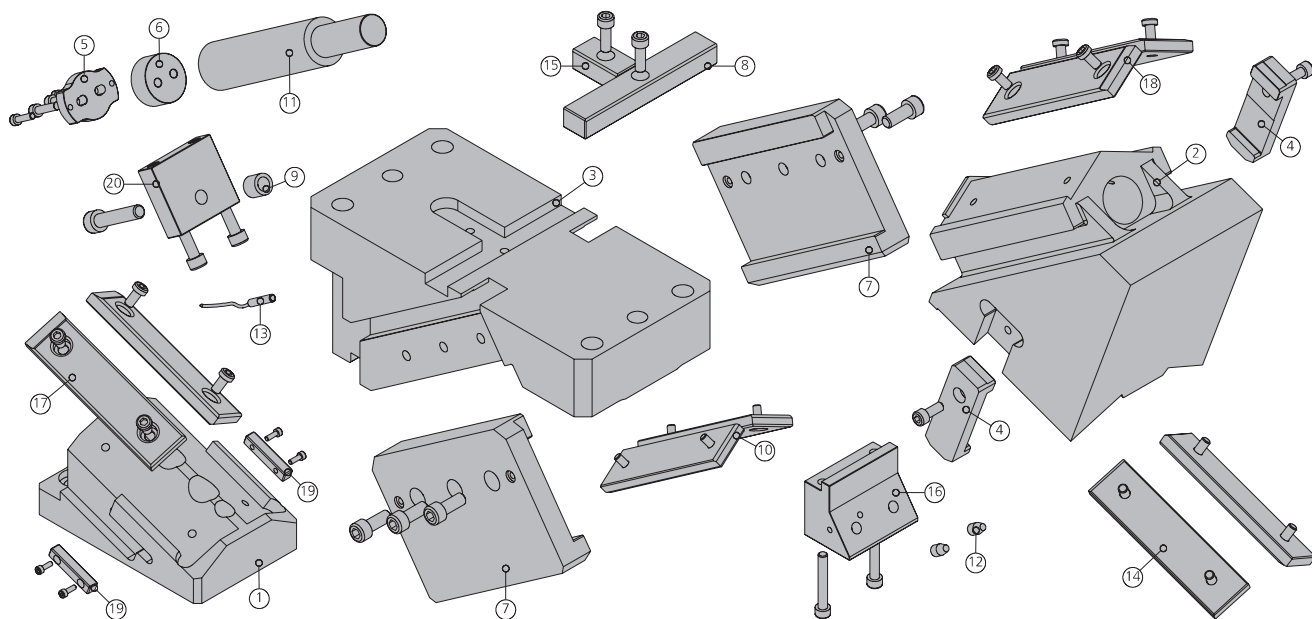
Symbol Opcji (SENSOR): 9003.0002

Option Code

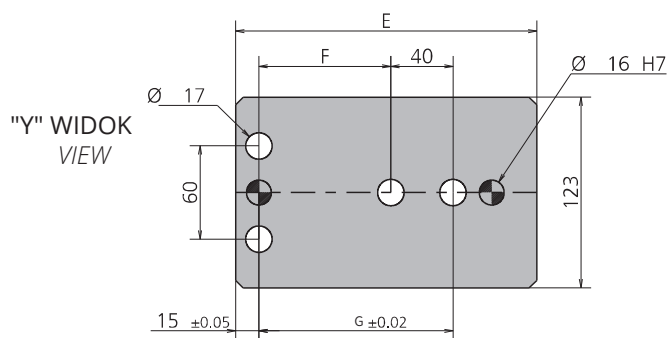
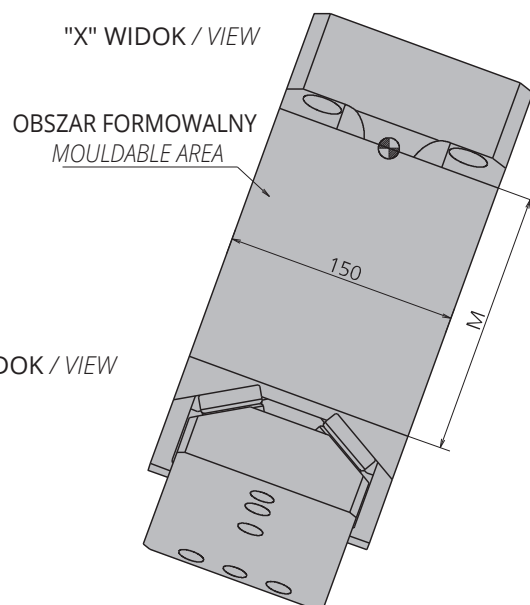
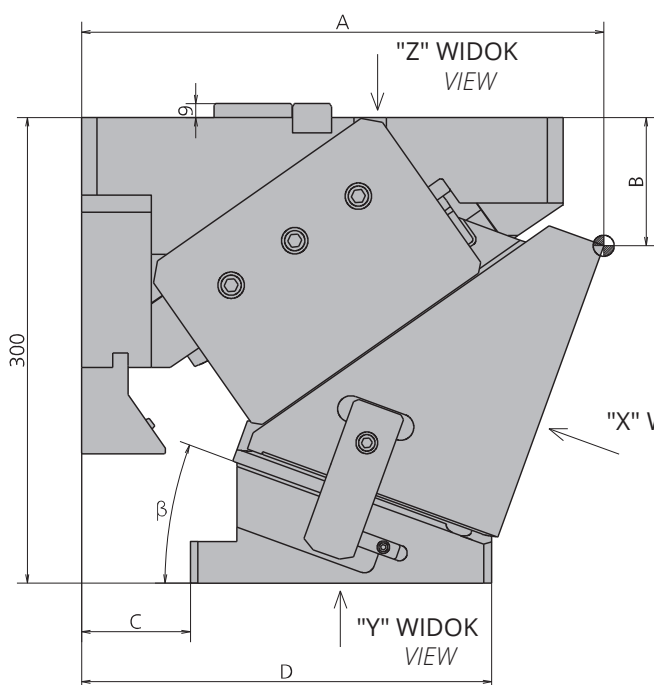
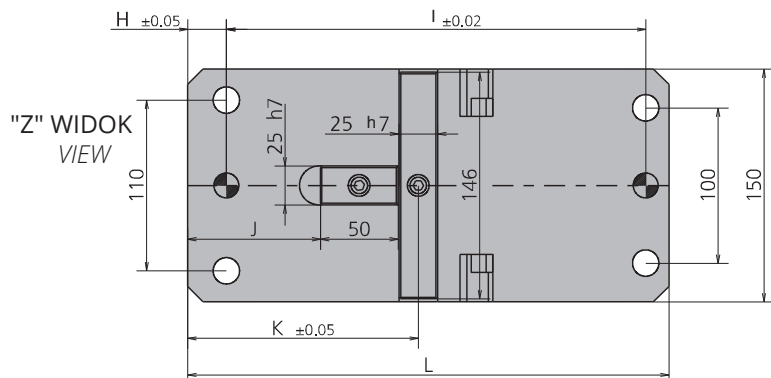
# SUWAKI PODWIESZANE

AERIAL CAM UNITS

# K802-06-150 (00 ~ 75mm)



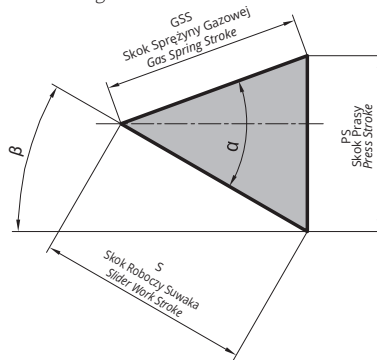
POZ. POS.	OPIS DESCRIPTION	ILOŚĆ QTY
001	KLIN / WEDGE	1
002	SUWAK / SLIDER	1
003	KORPUS SUWAKA / CAM BODY	1
004	MOCOWANIE WSPORNIKA / BRACKET ATTACHMENTS	2
005	PŁYTA / PLATE	1
006	DYSTANS / SPACER	1
007	WSPORNIK / BRACKET	2
008	WPUST / KEY	1
009	WYŁĄCZNIKI KRAŃCOWE / LIMIT SWITCHES	1
010	PŁYTKA ŚCIERALNA / WEAR PLATE	2
011	SPRĘŻYNA GAZOWA / NITROGEN CYLINDER	1
012	ZDERZAK / BUMP STOP	2
013	CZUJNIK BEZPIECZEŃSTWA / SECURITY SENSOR	1*OPCJA / OPTION
014	PŁYTKA ŚCIERALNA / WEAR PLATE	2
015	WPUST / KEY	1
016	WYŁĄCZNIKI KRAŃCOWE / LIMIT SWITCHES	1
017	PŁYTKA ŚCIERALNA / WEAR PLATE	2
018	PŁYTKA ŚCIERALNA / WEAR PLATE	2
019	WPUST / KEY	2
020	WYŁĄCZNIKI KRAŃCOWE / LIMIT SWITCHES	1



Symbol: Catalog No:	$\beta$	A	B	C	D	E	F	G	H	I	J	K	L	M
K802-06-150.00	0°	298	65	70	290	220	85	150	25	270	54	117	310	160
K802-06-150.05	5°	307.2	69.35	70	280	210	85	150	25	270	61.5	124.5	310	160
K802-06-150.10	10°	313.81	89.28	70	270	200	85	150	25	270	69	132	310	180
K802-06-150.15	15°	321.7	94.96	70	265	195	85	150	25	270	78	141	310	180
K802-06-150.20	20°	329.51	101.32	70	264	194	85	150	25	270	85.5	148.5	310	180
K802-06-150.25	25°	342.93	117.42	60	262	202	105	170	15	320	104.5	167.5	350	190
K802-06-150.30	30°	352.11	125.39	60	259	199	105	170	15	320	112	175	350	190
K802-06-150.35	35°	364.66	130.3	60	261	201	105	170	15	320	119.5	182.5	350	190
K802-06-150.40	40°	371.87	144.51	60	257	197	105	170	15	320	127	190	350	190
K802-06-150.45	45°	325.76	152.27	20	202	182	85	150	15	310	73	136	340	190
K802-06-150.50	50°	332.72	168.31	20	199	179	85	150	15	310	79	142	340	190
K802-06-150.55	55°	347.32	179.21	20	206	186	85	150	15	310	64.5	127.5	340	190
K802-06-150.60	60°	353.59	197.11	20	203	183	85	150	15	310	71.5	134.5	340	190
K802-06-150.65	65°	359.15	205.52	20	203	183	85	150	15	310	71.5	134.5	340	190
K802-06-150.70	70°	334.26	226.1	0	168	168	70	135	15	310	71.5	134.5	340	190
K802-06-150.75	75°	338.15	234.94	0	167	167	70	135	15	310	71.5	134.5	340	190

$\alpha$	GSS	S	PS
50°	50,00	32,14	38,30
		35,49	38,45
35,90		41,59	
55°		39,65	42,40
		43,59	43,59
60°		45,19	47,78
		50,00	50,00
65°		52,86	55,32
		59,16	59,16
70°		64,09	66,45
	73,10	73,10	
75°	81,92	84,20	
	96,59	96,59	
80°	40,00	91,42	93,21
85°	30,00	84,73	87,38
	20,00	76,10	76,98

Schemat Suwaka  
Cam Diagram



Sprężyna Spring	$\theta$	Ilość QTY	Model Model
GS	0-60	1	RV500-080-B
	65-75		RV500-063-B

SENSOR Poz No:13

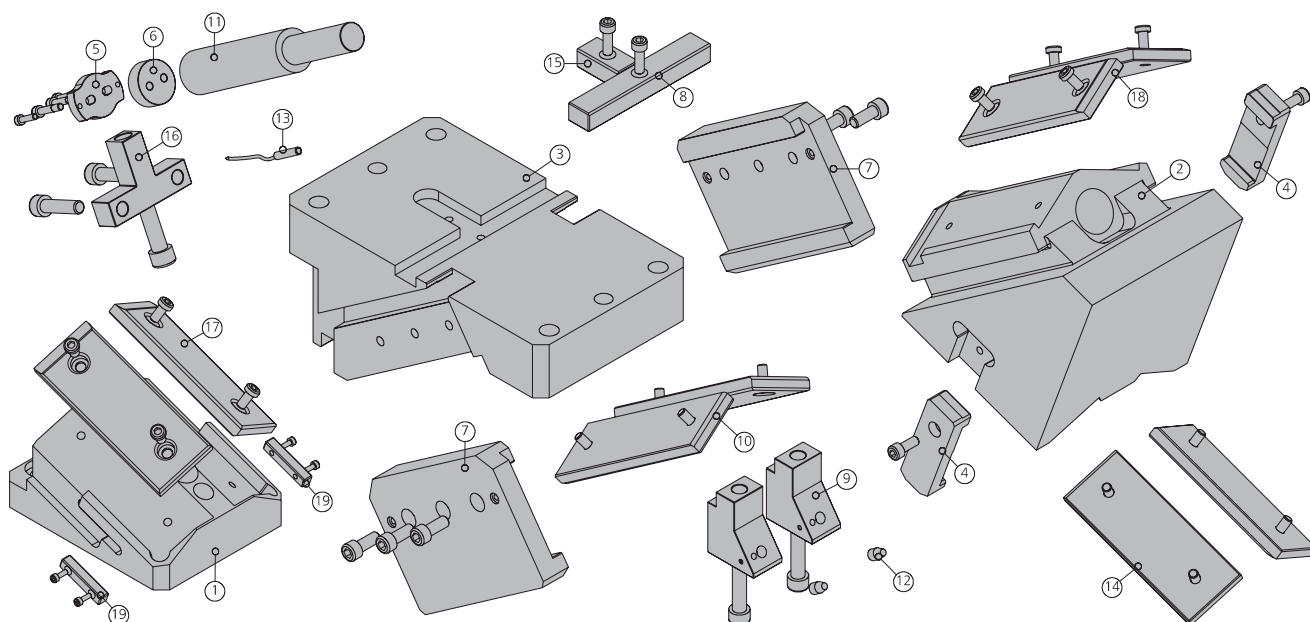


**Przykład Zamówienia:**  
Order Example:  
**W=150,  $\theta$ =25, GS**  
**Symbol:** K802-06-150-25-GS **Symbol Opcji (SENSOR):** 9003.0002  
Option Code

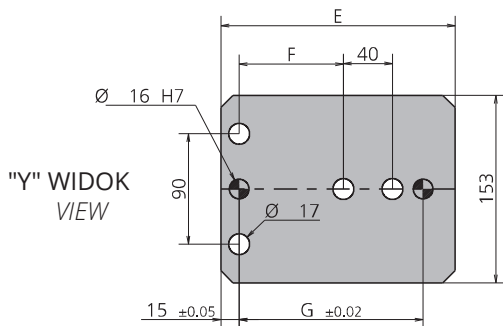
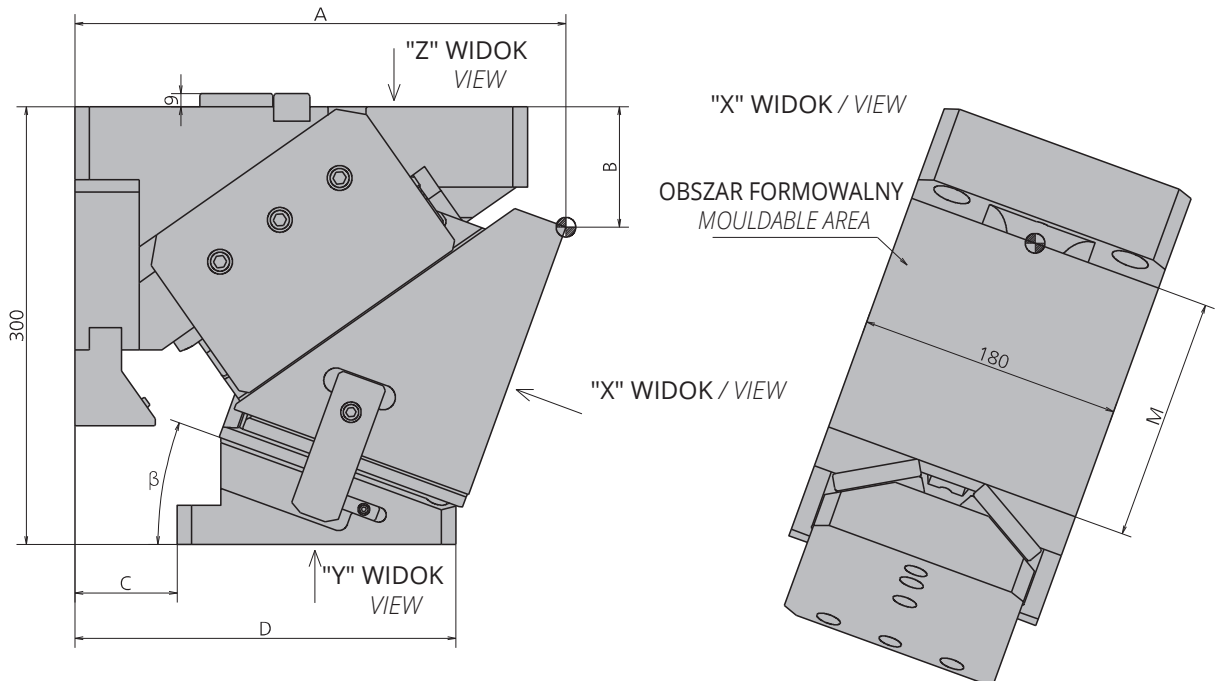
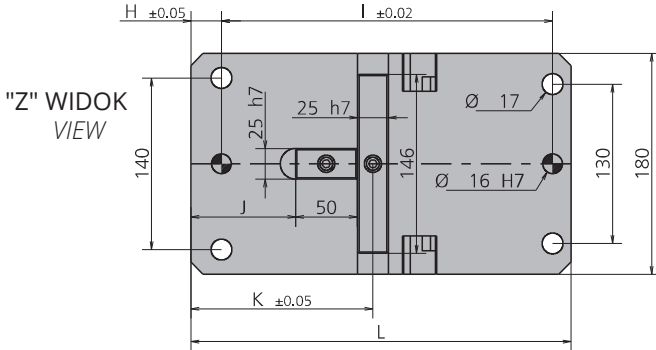
# SUWAKI PODWIESZANE

AERIAL CAM UNITS

## K802-06-180 (00 ~ 75mm)



POZ. POS.	OPIS DESCRIPTION	ILOŚĆ QTY
001	KLIN / WEDGE	1
002	SUWAK / SLIDER	1
003	KORPUS SUWAKA / CAM BODY	1
004	MOCOWANIE WSPORNIKA / BRACKET ATTACHMENTS	2
005	PŁYTA / PLATE	1
006	DYSTANS / SPACER	1
007	WSPORNIK / BRACKET	2
008	WPUST / KEY	1
009	WYŁĄCZNIKI KRAŃCOWE / LIMIT SWITCHES	2
010	PŁYTKA ŚCIERALNA / WEAR PLATE	2
011	SPRĘŻYNA GAZOWA / NITROGEN CYLINDER	1
012	ZDERZAK / BUMP STOP	2
013	CZUJNIK BEZPIECZEŃSTWA / SECURITY SENSOR	1*OPCJA / OPTION
014	PŁYTKA ŚCIERALNA / WEAR PLATE	2
015	WPUST / KEY	1
016	WYŁĄCZNIKI KRAŃCOWE / LIMIT SWITCHES	1
017	PŁYTKA ŚCIERALNA / WEAR PLATE	2
018	PŁYTKA ŚCIERALNA / WEAR PLATE	2
019	WPUST / KEY	2

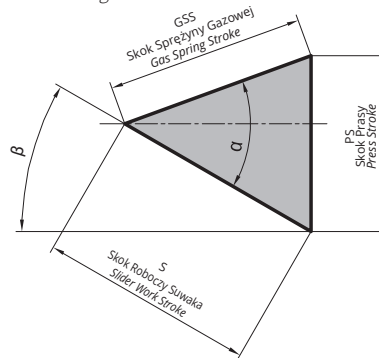




Symbol: Catalog No:	$\beta$	A	B	C	D	E	F	G	H	I	J	K	L	M
K802-06-180.00	0°	298	65	70	290	220	85	150	25	270	54	117	310	160
K802-06-180.05	5°	307.2	69.35	70	280	210	85	150	25	270	61.5	124.5	310	160
K802-06-180.10	10°	313.81	89.28	70	270	200	85	150	25	270	69	132	310	180
K802-06-180.15	15°	321.7	94.96	70	265	195	85	150	25	270	78	141	310	180
K802-06-180.20	20°	329.51	101.32	70	261	191	85	150	25	270	85.5	148.5	310	180
K802-06-180.25	25°	324.93	117.42	60	259	199	105	170	15	320	104.5	167.5	350	200
K802-06-180.30	30°	352.11	125.39	60	259	199	105	170	15	320	112	175	350	200
K802-06-180.35	35°	364.66	130.3	60	261	201	105	170	15	320	119.5	182.5	350	200
K802-06-180.40	40°	371.87	144.51	60	257	197	105	170	15	320	127	190	350	200
K802-06-180.45	45°	325.76	152.27	20	202	182	85	150	15	310	73	136	340	200
K802-06-180.50	50°	332.72	168.31	20	199	179	85	150	15	310	79	142	340	200
K802-06-180.55	55°	347.32	179.21	20	206	186	85	150	15	310	64.5	127.5	340	200
K802-06-180.60	60°	353.59	197.11	20	202	182	85	150	15	310	71.5	134.5	340	200
K802-06-180.65	65°	359.15	205.52	20	201	181	85	150	15	310	71.5	134.5	340	200
K802-06-180.70	70°	334.26	226.1	0	168	168	70	135	15	310	71.5	134.5	340	200
K802-06-180.75	75°	338.15	234.94	0	172	172	70	135	15	310	71.5	134.5	340	200

$\alpha$	GSS	S	PS
50°	50,00	32,14	38,30
		35,49	38,45
35,90		41,59	
55°		39,65	42,40
		43,59	43,59
60°		45,19	47,78
		50,00	50,00
65°		52,86	55,32
		59,16	59,16
70°		64,09	66,45
	73,10	73,10	
	81,92	84,20	
75°	96,59	96,59	
	80°	40,00	91,42
85°	30,00	84,73	87,38
	20,00	76,10	76,98

Schemat Suwaka  
Cam Diagram



Suwaki GSB

Sprężyna Spring	$\theta$	Ilość QTY	Model Model
GS	0-60	1	RV320-075-C
	65-75		RV320-063-C

SENSOR Poz No:13



Przykład Zamówienia:  
Order Example:

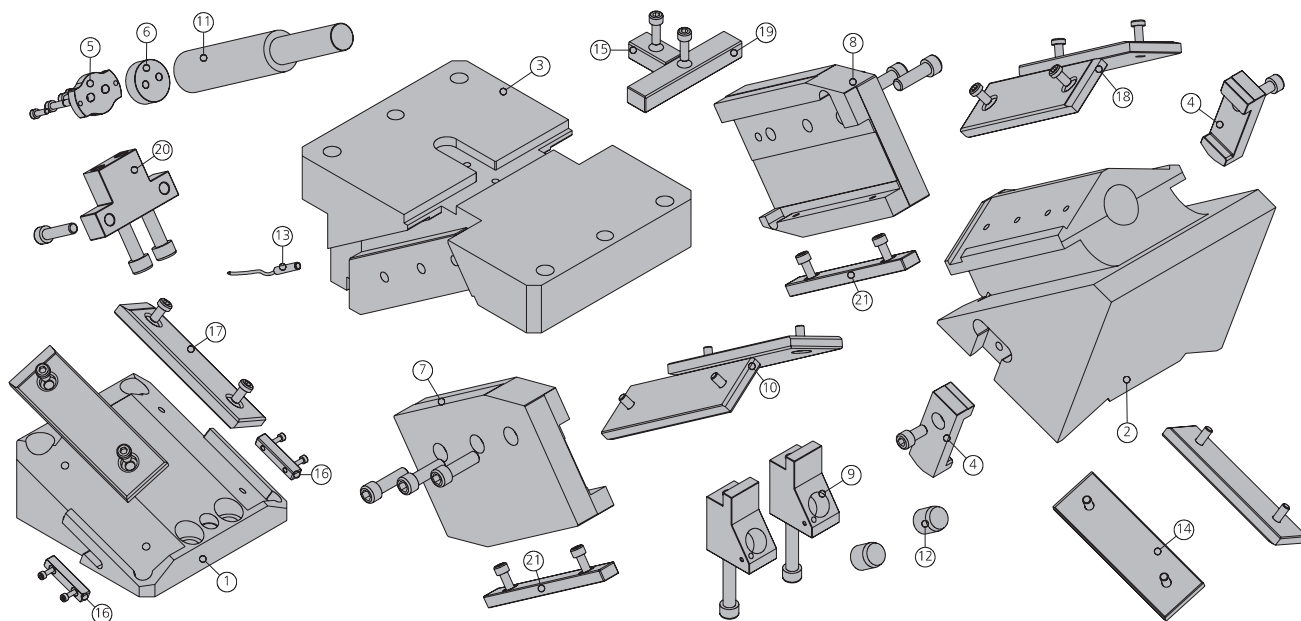
W=180,  $\theta$ =25, GS

Symbol: K802-06-180-25-GS    Symbol Opcji (SENSOR): 9003.0002  
Option Code

# SUWAKI PODWIESZANE

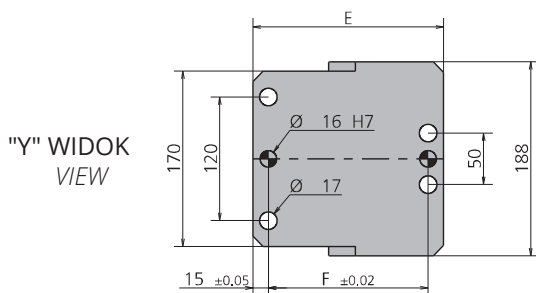
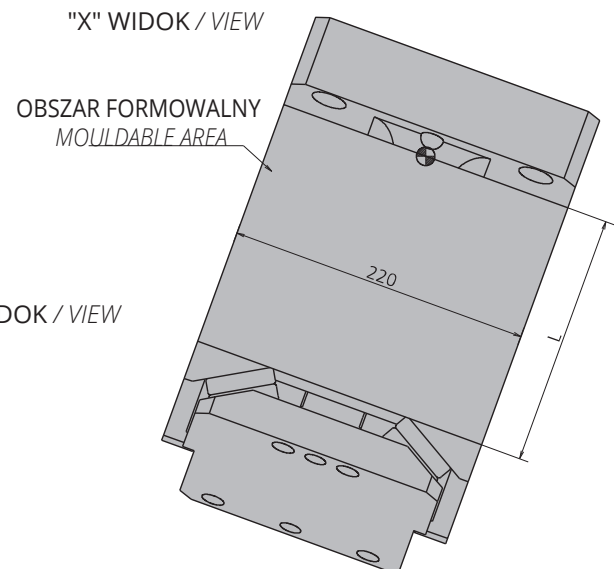
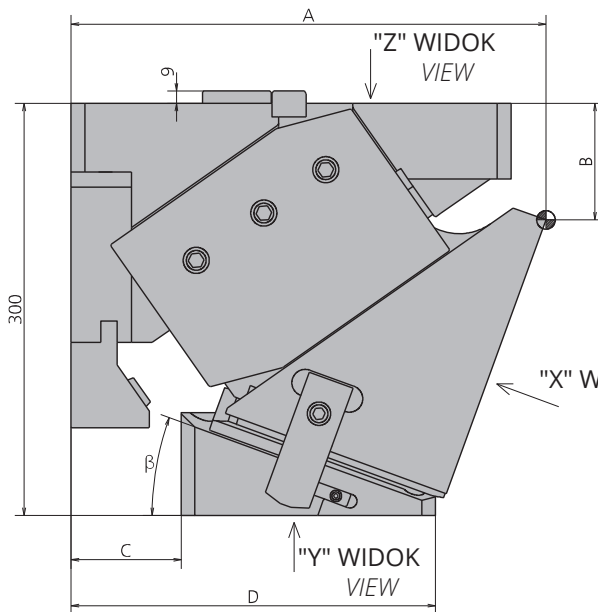
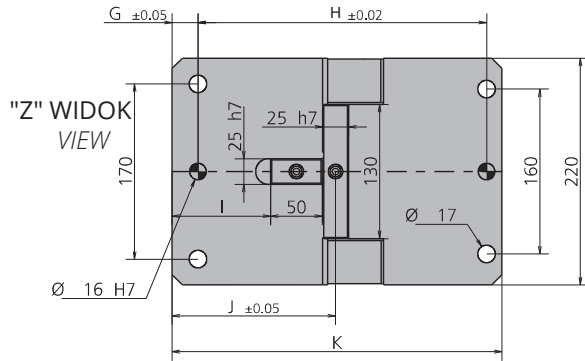
AERIAL CAM UNITS

# K802-06-220 (00 ~ 75mm)



POZ. POS.	OPIS DESCRIPTION	ILOŚĆ QTY
001	KLIN / WEDGE	1
002	SUWAK / SLIDER	1
003	KORPUS SUWAKA / CAM BODY	1
004	MOCOWANIE WSPORNIKA / BRACKET ATTACHMENTS	2
005	PŁYTA / PLATE	1
006	DYSTANS / SPACER	1
007	WSPORNIK / BRACKET	1
008	WSPORNIK / BRACKET	1
009	WYŁĄCZNIKI KRAŃCOWE / LIMIT SWITCHES	2
010	PŁYTKA ŚCIERALNA / WEAR PLATE	2
011	SPRĘŻYNA GAZOWA / NITROGEN CYLINDER	1
012	ZDERZAK / BUMP STOP	2
013	CZUJNIK BEZPIECZEŃSTWA / SECURITY SENSOR	1*OPCJA / OPTION
014	PŁYTKA ŚCIERALNA / WEAR PLATE	2
015	WPUST / KEY	1
016	WPUST / KEY	2
017	PŁYTKA ŚCIERALNA / WEAR PLATE	2
018	PŁYTKA ŚCIERALNA / WEAR PLATE	2
019	WPUST / KEY	2
020	WYŁĄCZNIKI KRAŃCOWE / LIMIT SWITCHES	1
021	PŁYTKA ŚCIERALNA / WEAR PLATE	2

Suwaki GSB



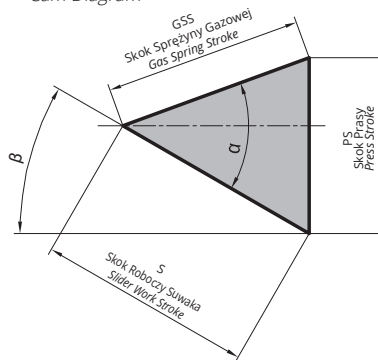
Suwaki GSB



Symbol: Catalog No:	$\beta$	A	B	C	D	E	F	G	H	I	J	K	L
K802-06-220.00	0°	308	60	80	295	215	155	25	280	64	127	320	160
K802-06-220.05	5°	317.63	64.37	80	290	210	155	25	280	71.5	134.5	320	160
K802-06-220.10	10°	323.81	69.28	80	280	200	155	25	280	79	142	320	190
K802-06-220.15	15°	331.7	74.96	80	270	190	155	25	280	88	151	320	183
K802-06-220.20	20°	337.8	81.02	80	265	185	155	25	280	95.5	158.5	320	183
K802-06-220.25	25°	345.05	87.89	60	255	195	150	15	330	104.5	167.5	360	200
K802-06-220.30	30°	357.11	95.73	60	250	190	150	15	330	112	175	360	200
K802-06-220.35	35°	362.94	102.76	60	245	185	150	15	330	119.5	182.5	360	210
K802-06-220.40	40°	373.16	110.98	60	240	180	150	15	330	127	190	360	210
K802-06-220.45	45°	348.64	119.39	45	205	160	130	15	335	98	161	365	210
K802-06-220.50	50°	355.42	128.24	45	205	160	130	15	335	104	167	365	210
K802-06-220.55	55°	361.67	137.67	45	206	161	130	15	335	89.5	152.5	365	210
K802-06-220.60	60°	371.66	147.11	45	204	159	130	15	335	96.5	159.5	365	210
K802-06-220.65	65°	367.84	157.13	45	206	161	130	15	335	96.5	159.5	365	210
K802-06-220.70	70°	372.05	167.55	45	208	163	130	15	335	96.5	159.5	365	210
K802-06-220.75	75°	352.07	178.93	35	180	145	115	15	335	96.5	159.5	365	210

$\alpha$	GSS	S	PS
50°	50,00	32,14	38,30
		35,49	38,45
35,90		41,59	
55°		39,65	42,40
		43,59	43,59
60°		45,19	47,78
		50,00	50,00
65°		52,86	55,32
		59,16	59,16
70°		64,09	66,45
	73,10	73,10	
75°	81,92	84,20	
	96,59	96,59	
80°	40,00	91,42	93,21
	35,00	100,78	100,78
85°	25,00	95,13	96,23

Schemat Suwaka  
Cam Diagram



Sprężyna Spring	$\theta$	Ilość QTY	Model Model
GS	0-60	1	RV750-080-B
	65-70		RV750-075-B
	75		RV750-063-B

SENSOR      Poz No:13



Suwaki GSB

Przykład Zamówienia:  
Order Example:

W=220,  $\theta$ =25, GS

Symbol: K802-06-220-25-GS

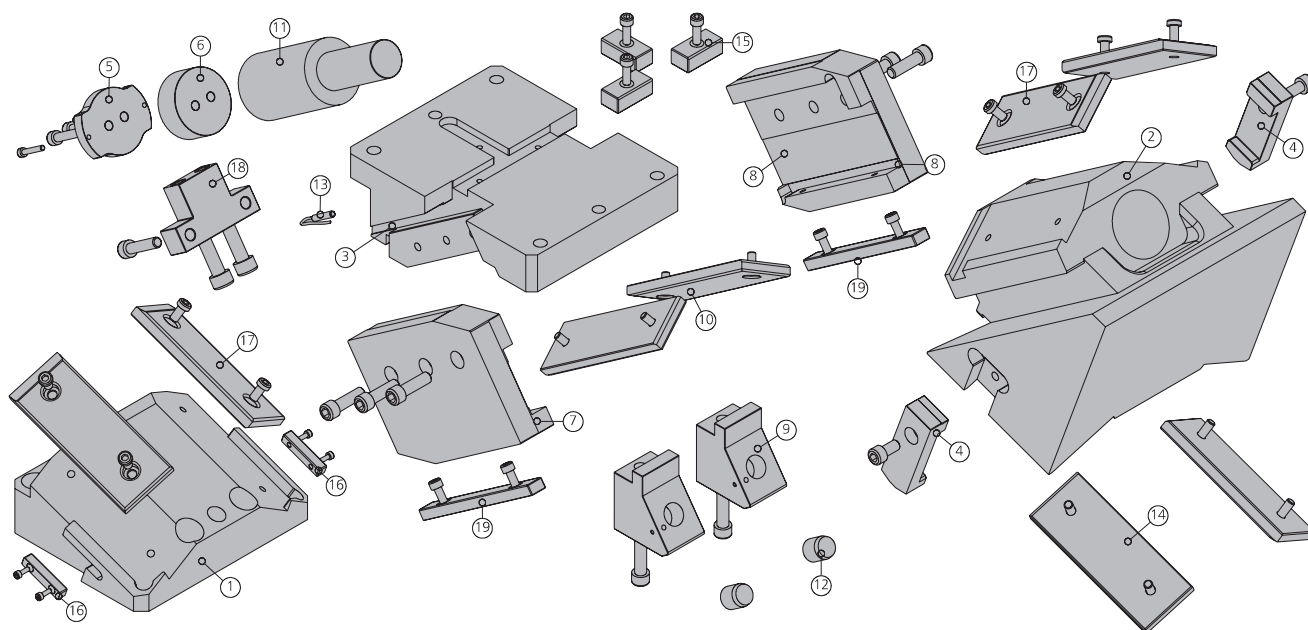
Symbol Opcji (SENSOR): 9003.0002  
Option Code



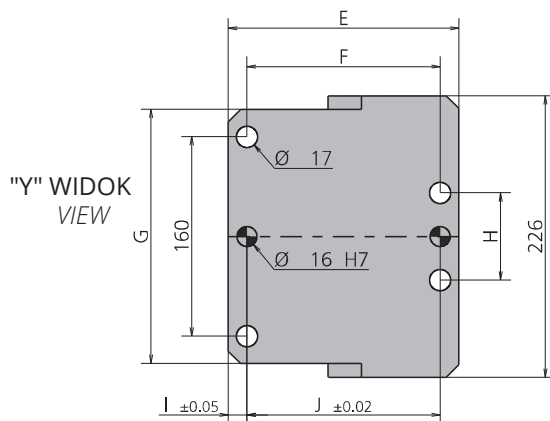
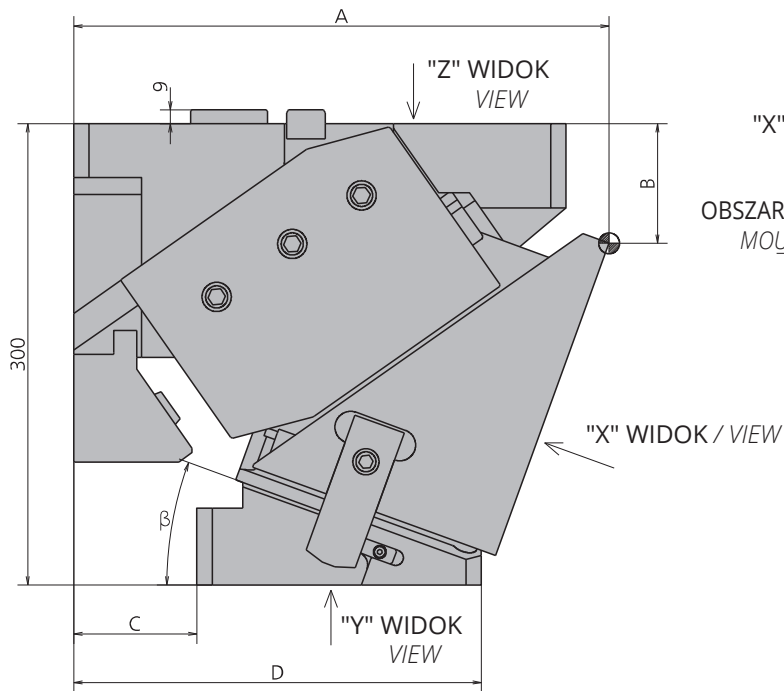
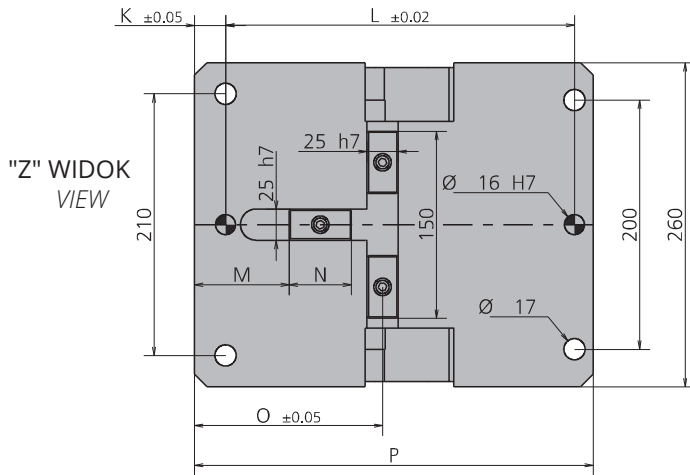
# SUWAKI PODWIESZANE

AERIAL CAM UNITS

## K802-06-260 (00 ~ 75mm)



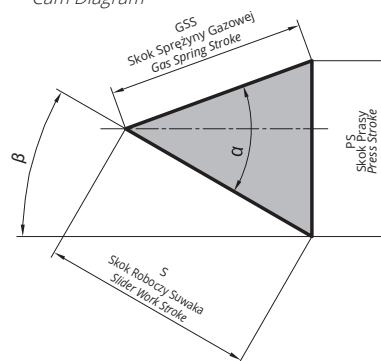
POZ. POS.	OPIS DESCRIPTION	ILOŚĆ QTY
001	KLIN / WEDGE	1
002	SUWAK / SLIDER	1
003	KORPUS SUWAKA / CAM BODY	1
004	MOCOWANIE WSPORNIKA / BRACKET ATTACHMENTS	2
005	PŁYTA / PLATE	1
006	DYSTANS / SPACER	1
007	WSPORNIK / BRACKET	1
008	WSPORNIK / BRACKET	1
009	WYŁĄCZNIKI KRAŃCOWE / LIMIT SWITCHES	2
010	PŁYTKA ŚCIERALNA / WEAR PLATE	2
011	SPRĘŻYNA GAZOWA / NITROGEN CYLINDER	1
012	ZDERZAK / BUMP STOP	2
013	CZUJNIK BEZPIECZEŃSTWA / SECURITY SENSOR	1*OPCJA / OPTION
014	PŁYTKA ŚCIERALNA / WEAR PLATE	2
015	WPUST / KEY	3
016	WPUST / KEY	2
017	PŁYTKA ŚCIERALNA / WEAR PLATE	4
018	WYŁĄCZNIKI KRAŃCOWE / LIMIT SWITCHES	1
019	PŁYTKA ŚCIERALNA / WEAR PLATE	2



Symbol: Catalog No:	$\beta$	A	B	C	D	E	F	G	H	I	J	K	L	M	N	O	P	Q
K802-06-260.00	0°	308	60	80	295	215	155	204	70	15	155	25	280	63.5	50	127	320	160
K802-06-260.05	5°	317.63	64.37	80	290	210	155	204	90	15	155	25	280	70.5	50	134	320	160
K802-06-260.10	10°	323.81	69.28	80	280	200	155	204	70	15	155	25	280	78.5	50	142	320	190
K802-06-260.15	15°	331.7	74.96	80	270	190	155	204	70	15	155	25	280	76	50	151	320	190
K802-06-260.20	20°	337.8	80.02	80	265	185	155	204	70	15	155	25	280	76	50	151	320	190
K802-06-260.25	25°	345.05	85.89	60	255	195	150	204	70	15	150	15	330	52.5	120	167.5	360	190
K802-06-260.30	30°	357.11	92.73	60	250	190	150	204	70	15	150	15	330	60	120	175	360	190
K802-06-260.35	35°	362.94	99.76	60	245	185	150	204	70	15	150	15	330	62.5	130	182.5	360	210
K802-06-260.40	40°	373.16	107.98	60	240	180	150	204	70	15	150	15	330	70	130	190	360	210
K802-06-260.45	45°	348.64	116.39	45	205	160	130	204	70	15	130	15	335	71	100	161	365	210
K802-06-260.50	50°	355.42	125.24	45	205	160	130	204	70	15	130	15	335	79	100	167	365	210
K802-06-260.55	55°	361.67	134.67	45	215	170	130	204	70	15	130	15	335	64.5	100	152.5	365	210
K802-06-260.60	60°	371.66	144.11	45	205	160	130	204	70	15	130	15	335	49.5	120	159.5	365	210
K802-06-260.65	65°	367.84	153.13	45	211	166	120	204	70	20	120	15	335	49.5	120	159.5	365	210
K802-06-260.70	70°	372.05	162.55	45	210	165	130	226	90	15	130	15	335	49.5	120	159.5	365	210
K802-06-260.75	75°	352.07	172.93	35	185	150	115	226	90	15	115	15	335	49.5	120	159.5	365	210

$\alpha$	GSS	S	PS
50°	50,00	32,14	38,30
		35,49	38,45
55°	50,00	35,90	41,59
		39,65	42,40
60°	50,00	43,59	43,59
		45,19	47,78
65°	50,00	50,00	50,00
		52,86	55,32
70°	50,00	59,16	59,16
		64,09	66,45
75°	50,00	73,10	73,10
		81,92	84,20
80°	50,00	96,59	96,59
		40,00	91,42
85°	50,00	35,00	100,78
		25,00	95,13

Schemat Suwaka  
Cam Diagram



Sprężyna Spring	$\theta$	Ilość QTY	Model Model
GS	0-65	1	RV1500-080-C
	70-75		RV1500-063-C

SENSOR Poz No:13



Przykład Zamówienia:  
Order Example:

W=260,  $\theta$ =25, GS

Symbol: K802-06-260-25-GS

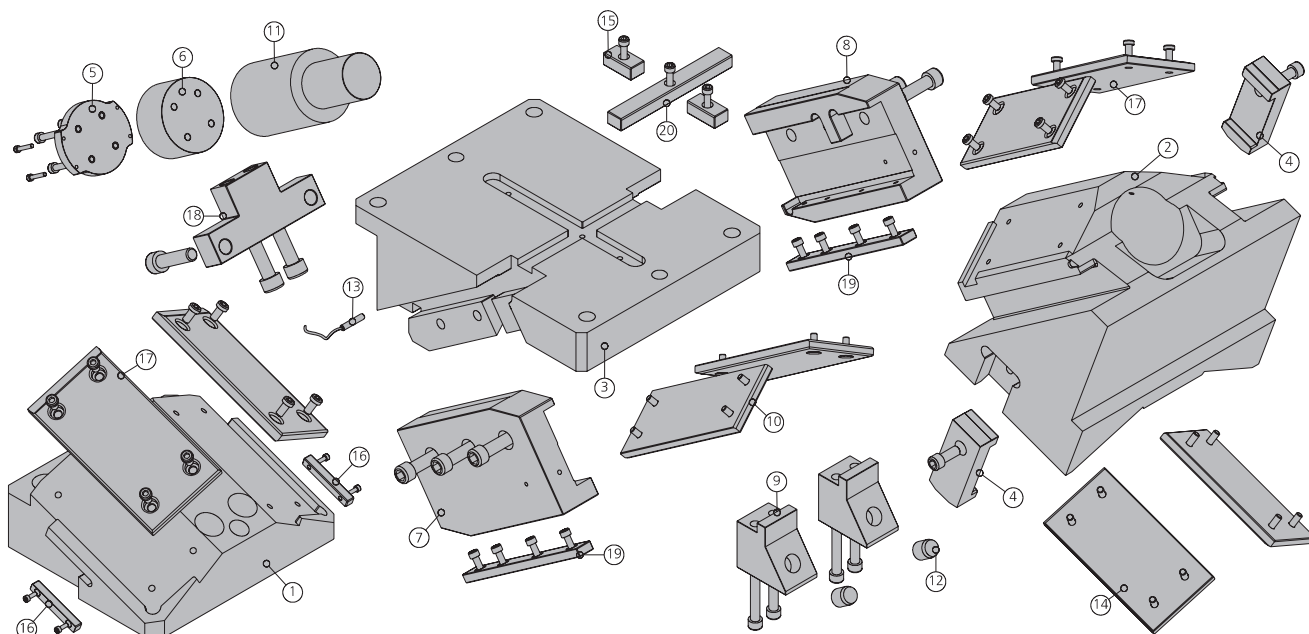
Symbol Opcji (SENSOR): 9003.0002

Option Code

# SUWAKI PODWIESZANE

AERIAL CAM UNITS

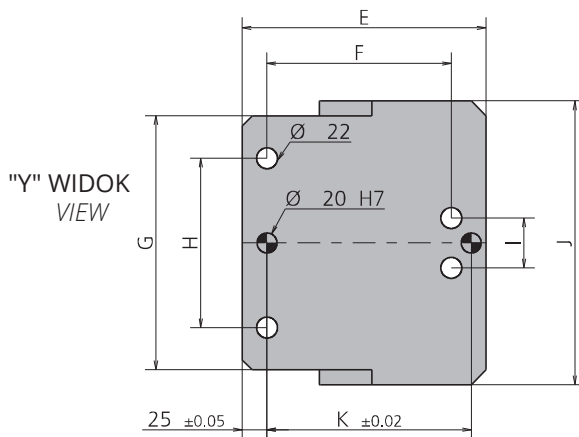
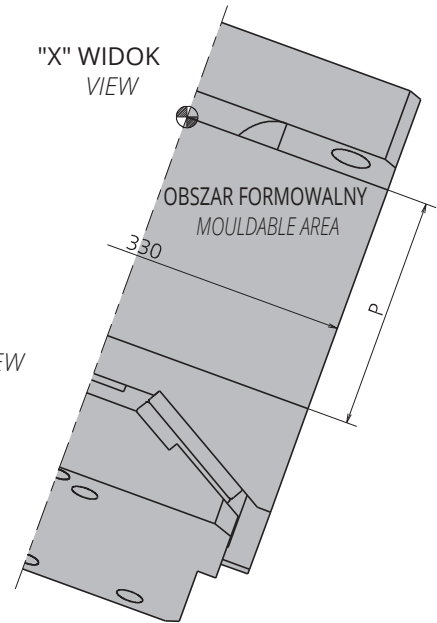
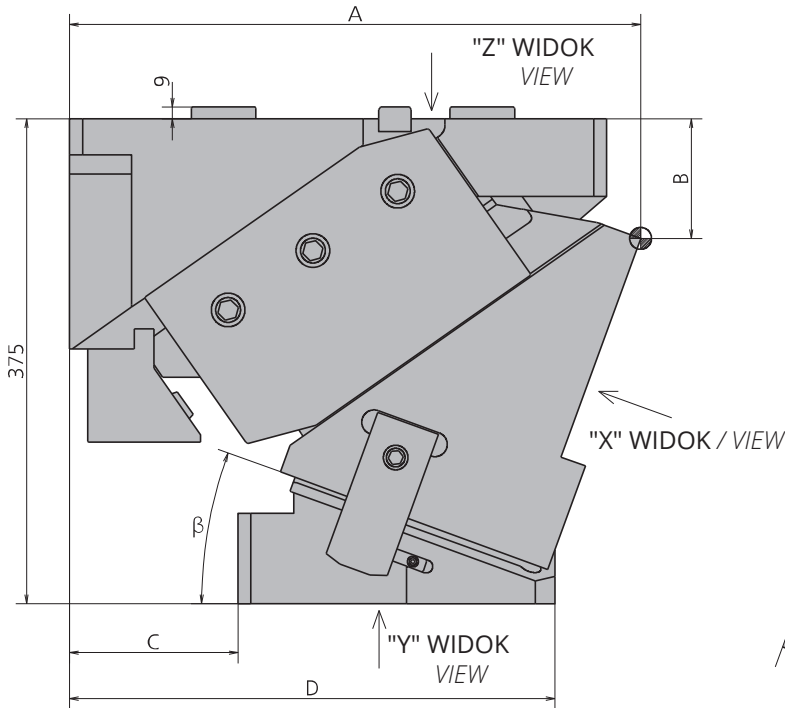
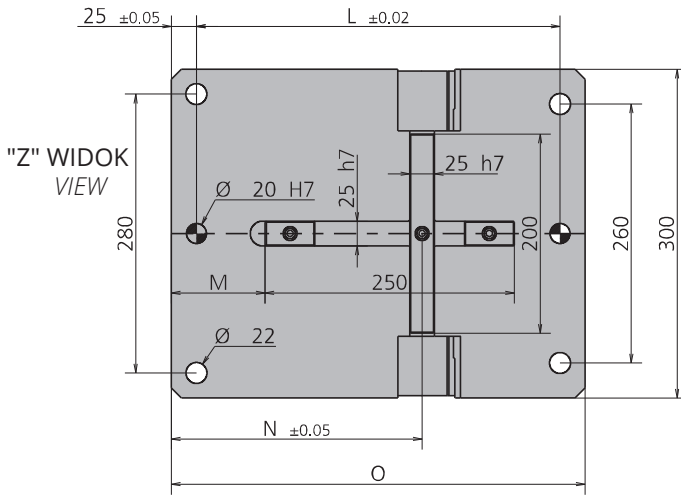
## K802-06-330 (00 ~ 75mm)



POZ. POS.	OPIS DESCRIPTION	ILOŚĆ QTY
001	KLIN / WEDGE	1
002	SUWAK / SLIDER	1
003	KORPUS SUWAKA / CAM BODY	1
004	MOCOWANIE WSPORNIKA / BRACKET ATTACHMENTS	2
005	PŁYTA / PLATE	1
006	DYSTANS / SPACER	1
007	WSPORNIK / BRACKET	1
008	WSPORNIK / BRACKET	1
009	WYŁĄCZNIKI KRAŃCOWE / LIMIT SWITCHES	2
010	PŁYTKA ŚCIERALNA / WEAR PLATE	2
011	SPRĘŻYNA GAZOWA / NITROGEN CYLINDER	1
012	ZDERZAK / BUMP STOP	2
013	CZUJNIK BEZPIECZEŃSTWA / SECURITY SENSOR	1*OPCJA / OPTION
014	PŁYTKA ŚCIERALNA / WEAR PLATE	2
015	WPUST / KEY	2
016	WPUST / KEY	2
017	PŁYTKA ŚCIERALNA / WEAR PLATE	4
018	WYŁĄCZNIKI KRAŃCOWE / LIMIT SWITCHES	1
019	PŁYTKA ŚCIERALNA / WEAR PLATE	2
020	WPUST / KEY	1

**SUWAKI PODWIESZANE**  
AERIAL CAM UNITS

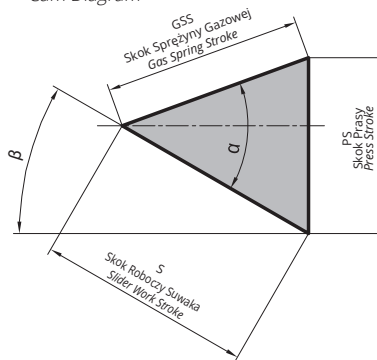
**K802-06-330 (00 ~ 75mm)**



Symbol: Catalog No:	$\beta$	A	B	C	D	E	F	G	H	I	J	K	L	M	N	O	P
K802-06-330.00	0°	403	75	130	410	280	185	254	170	60	285	205	365	72	209.5	415	180
K802-06-330.05	5°	410.89	94.3	130	398	268	185	254	170	50	285	205	365	82.5	220	415	180
K802-06-330.10	10°	418.81	99.28	130	384	254	185	254	170	50	285	205	365	93	230.5	415	200
K802-06-330.15	15°	426.7	104.96	130	385	255	185	254	170	50	285	205	365	103.5	241	415	200
K802-06-330.20	20°	434.51	111.32	130	375	245	185	254	170	50	285	205	365	94	251.5	415	200
K802-06-330.25	25°	417.16	118.36	80	339	259	145	254	170	50	285	175	365	104.5	237	415	210
K802-06-330.30	30°	426.61	131.06	80	330	250	145	254	170	50	285	175	365	95	247.5	415	210
K802-06-330.35	35°	427.78	150.13	80	317	237	145	254	170	50	285	175	365	104	256.5	415	210
K802-06-330.40	40°	438.66	158.34	80	312	232	145	254	170	50	285	175	365	98	265.5	415	210
K802-06-330.45	45°	395.15	172.88	30	255	225	145	254	170	50	285	175	401	62	224.5	450	220
K802-06-330.50	50°	412.72	188.31	30	252	222	145	254	170	50	285	175	401	56	233.5	450	220
K802-06-330.55	55°	423.22	212.08	30	256	226	145	254	170	50	285	175	401	63.4	240.9	450	220
K802-06-330.60	60°	433.59	232.11	30	258	228	145	254	170	50	285	175	401	71	248.5	450	220
K802-06-330.65	65°	434.62	242.64	0	242	242	140	330	293	293	330	175	401	71	248.5	450	220
K802-06-330.70	70°	429.87	254.52	0	232	232	125	330	293	293	330	175	401	71	248.5	450	220
K802-06-330.75	75°	418.49	262.53	0	221	221	105	330	293	293	330	160	401	56	233.5	450	220

$\alpha$	GSS	S	PS
50°	58,00	37,28	44,43
		41,17	44,60
41,64		48,24	
46,00		49,19	
50,56		50,56	
52,42		55,42	
58,00		58,00	
61,32		64,17	
68,62		68,62	
74,34		77,08	
70°	84,79	84,79	
	95,02	97,67	
75°	112,05	112,05	
	102,85	104,86	
80°	45,00	127,09	131,07
85°	30,00	114,15	115,47

Schemat Suwaka  
Cam Diagram

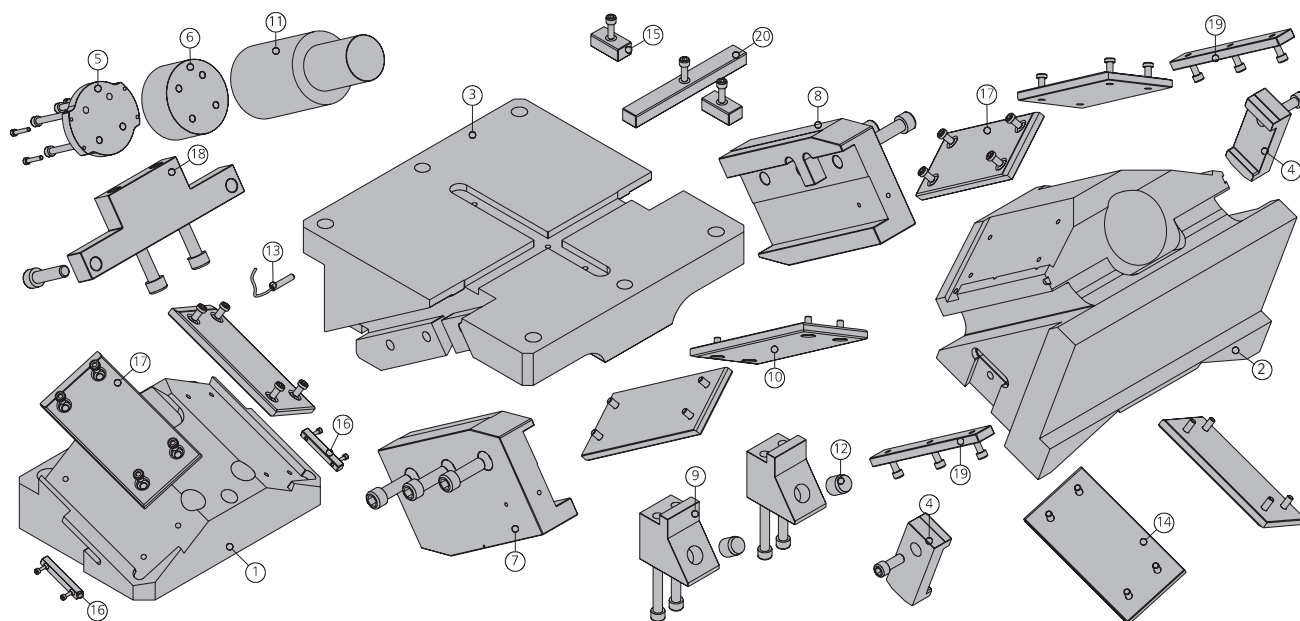


Sprężyna Spring	$\theta$	Ilość QTY	Model Model
GS	0-60	1	SC3000-080-E
	65-75		SC3000-050-E

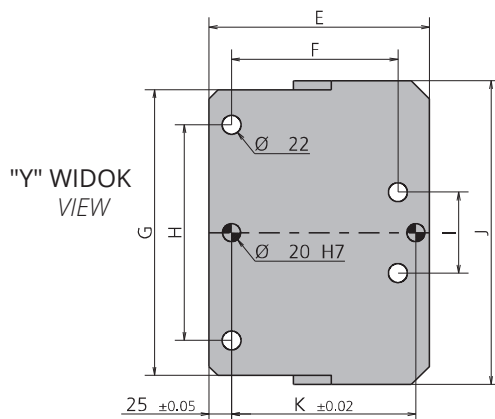
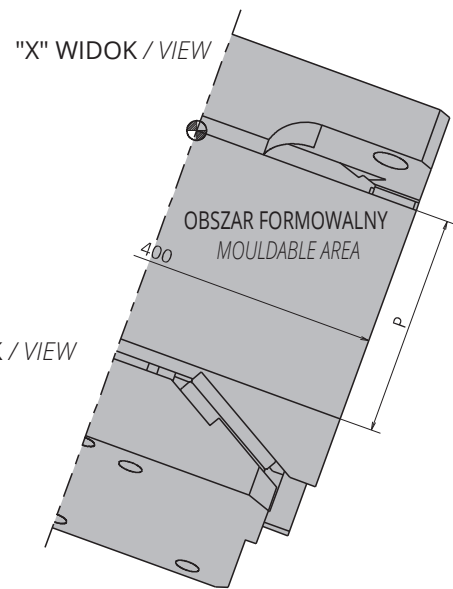
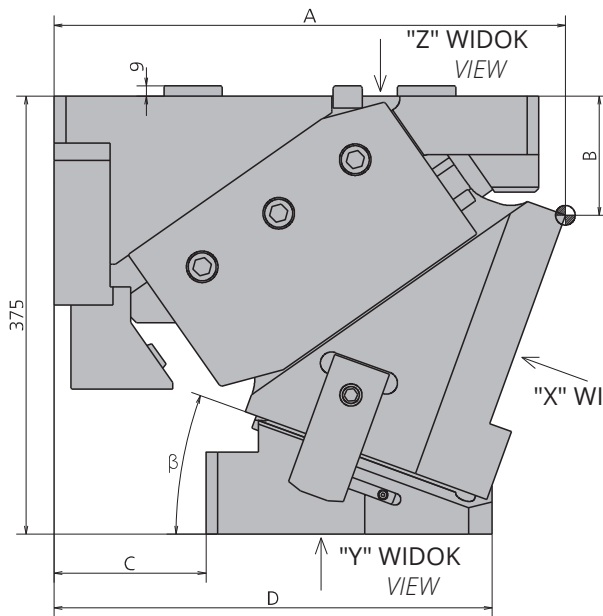
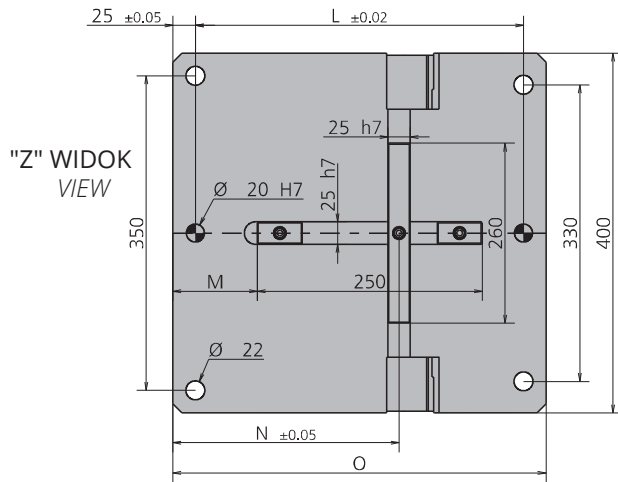
SENSOR Poz No:13



**Przykład Zamówienia:**  
Order Example:  
**W=330,  $\theta$ =25, GS**  
**Symbol:** K802-06-330-25-GS    **Symbol Opcji (SENSOR):** 9003.0002  
Option Code



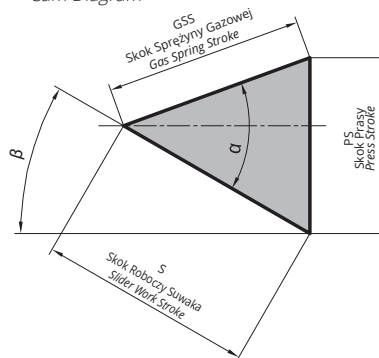
POZ. POS.	OPIS DESCRIPTION	ILOŚĆ QTY
001	KLIN / WEDGE	1
002	SUWAK / SLIDER	1
003	KORPUS SUWAKA / CAM BODY	1
004	MOCOWANIE WSPORNIKA / BRACKET ATTACHMENTS	2
005	PŁYTA / PLATE	1
006	DYSTANS / SPACER	1
007	WSPORNIK / BRACKET	1
008	WSPORNIK / BRACKET	1
009	WYŁĄCZNIKI KRAŃCOWE / LIMIT SWITCHES	2
010	PŁYTKA ŚCIERALNA / WEAR PLATE	2
011	SPRĘŻYNA GAZOWA / NITROGEN CYLINDER	1
012	ZDERZAK / BUMP STOP	2
013	CZUJNIK BEZPIECZEŃSTWA / SECURITY SENSOR	1*OPCJA / OPTION
014	PŁYTKA ŚCIERALNA / WEAR PLATE	2
015	WPUST / KEY	2
016	WPUST / KEY	2
017	PŁYTKA ŚCIERALNA / WEAR PLATE	4
018	WYŁĄCZNIKI KRAŃCOWE / LIMIT SWITCHES	1
019	PŁYTKA ŚCIERALNA / WEAR PLATE	2
020	WPUST / KEY	1



Symbol: Catalog No:	$\beta$	A	B	C	D	E	F	G	H	I	J	K	L	M	N	O	P
K802-06-400.00	0°	403	75	130	410	280	185	318	240	90	338	205	365	72	209.5	415	180
K802-06-400.05	5°	410.89	94.3	130	410	280	185	318	240	90	338	205	365	82.5	220	415	180
K802-06-400.10	10°	418.81	99.28	130	385	255	185	318	240	90	338	205	365	93	230.5	415	190
K802-06-400.15	15°	426.7	104.96	130	385	255	185	318	240	90	338	205	365	103.5	241	415	190
K802-06-400.20	20°	434.51	111.32	130	375	245	185	318	240	90	338	205	365	94	251.5	415	190
K802-06-400.25	25°	417.16	118.36	80	340	260	145	318	240	90	338	175	365	104.5	237	415	200
K802-06-400.30	30°	424.61	131.06	80	330	250	145	318	240	90	338	175	365	95	247.5	415	200
K802-06-400.35	35°	427.78	150.13	80	317	237	145	318	240	90	338	175	365	104	256.5	415	210
K802-06-400.40	40°	438.66	158.34	80	310	230	145	318	240	90	338	175	365	98	265.5	415	210
K802-06-400.45	45°	395.15	172.88	30	255	225	145	318	240	90	338	175	401	62	224.5	450	230
K802-06-400.50	50°	412.72	188.31	30	245	215	145	318	240	90	338	175	401	56	233.5	450	230
K802-06-400.55	55°	423.22	212.08	30	256	226	145	318	240	90	338	175	401	63.4	240.9	450	230
K802-06-400.60	60°	433.59	232.11	30	260	230	145	318	240	90	338	175	401	71	248.5	450	230
K802-06-400.65	65°	434.62	242.64	0	242	242	140	400	363	363	400	175	401	71	248.5	450	230
K802-06-400.70	70°	429.87	254.52	0	226	226	125	400	363	363	400	175	401	71	248.5	450	230
K802-06-400.75	75°	418.49	262.53	0	214	214	105	400	363	363	400	160	401	56	233.5	450	230

$\alpha$	GSS	S	PS
50°	58,00	37,28	44,43
		41,17	44,60
41,64		48,24	
46,00		49,19	
50,56		50,56	
52,42		55,42	
58,00		58,00	
61,32		64,17	
68,62		68,62	
74,34		77,08	
70°	45,00	84,79	84,79
		95,02	97,67
75°	30,00	112,05	112,05
		102,85	104,86
80°	30,00	127,09	131,07
		114,15	115,47

Schemat Suwaka  
Cam Diagram



Suwaki GSB

Sprężyna Spring	$\theta$	Ilość QTY	Model Model
GS	0-60	1	SC3000-050-E
	65		SC3000-063-E
	70-75		SC3000-050-E

SENSOR Poz No:13



Przykład Zamówienia:  
Order Example:

W=400,  $\theta$ =25, GS

Symbol: K802-06-400-25-GS

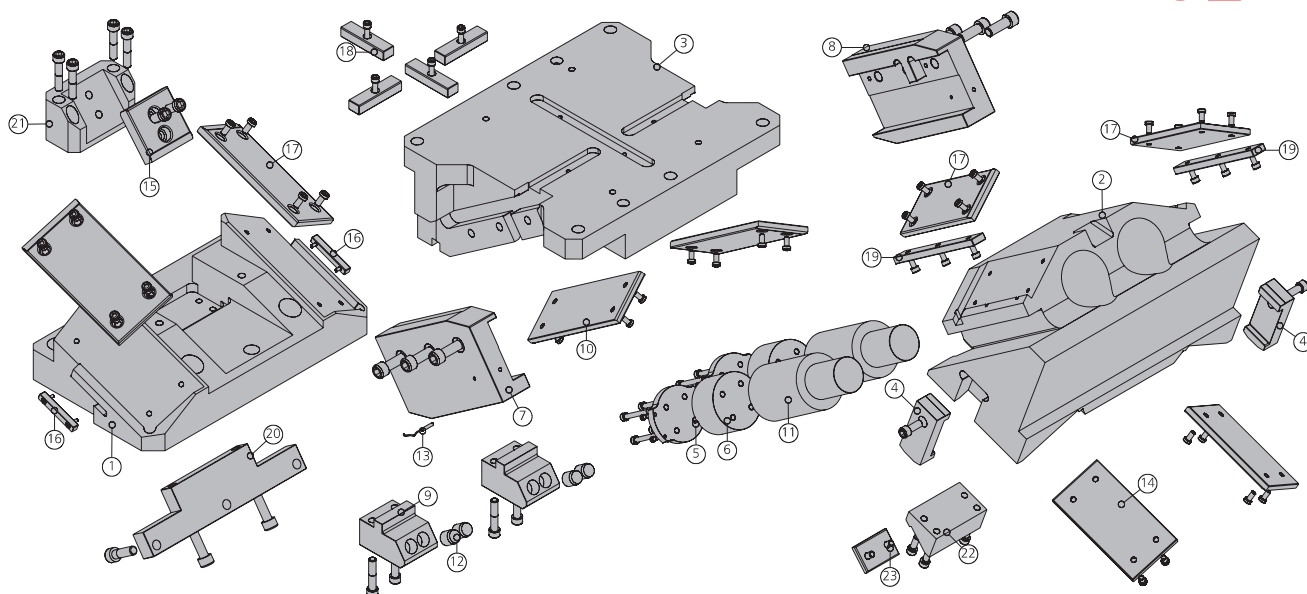
Symbol Opcji (SENSOR): 9003.0002

Option Code

# SUWAKI PODWIESZANE

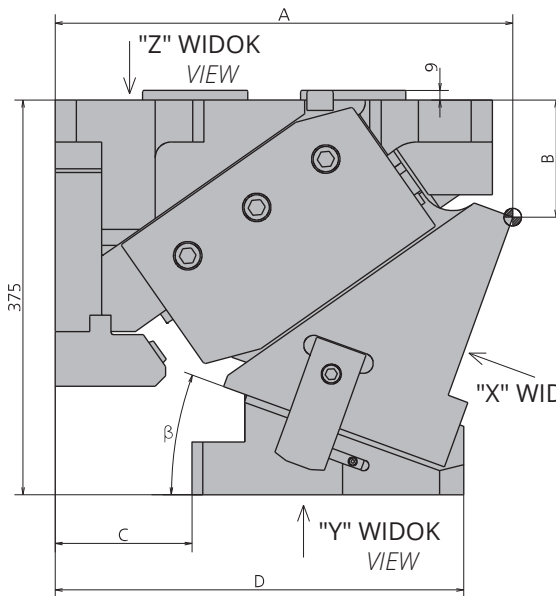
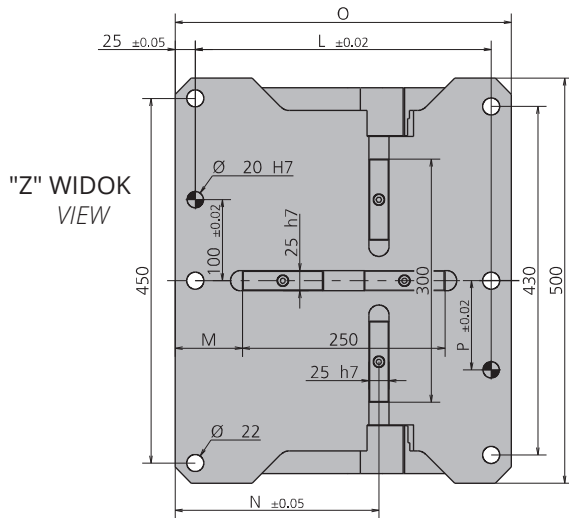
AERIAL CAM UNITS

# K802-06-500 (00 ~ 75mm)

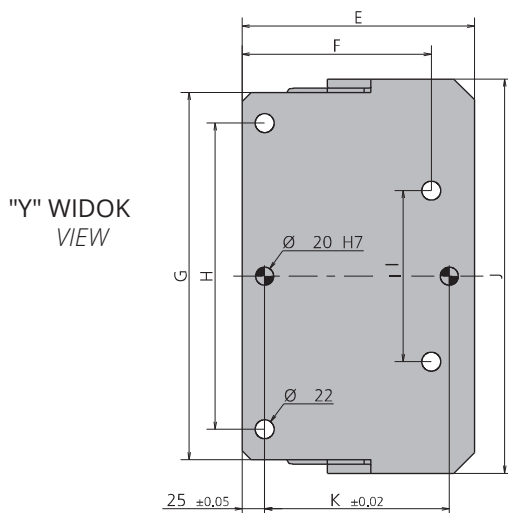
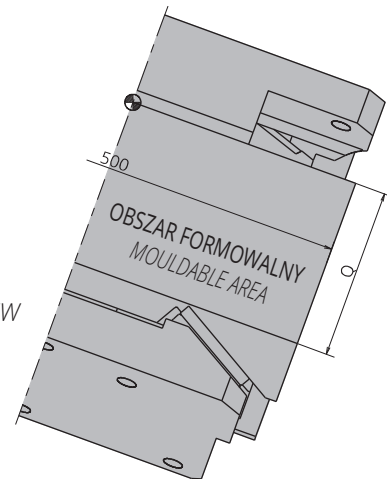


POZ. POS.	OPIS DESCRIPTION	ILOŚĆ QTY
001	KLIN / WEDGE	1
002	SUWAK / SLIDER	1
003	KORPUS SUWAKA / CAM BODY	1
004	MOCOWANIE WSPORNIKA / BRACKET ATTACHMENTS	2
005	PŁYTA / PLATE	2
006	DYSTANS / SPACER	2
007	WSPORNIK / BRACKET	1
008	WSPORNIK / BRACKET	1
009	WYŁĄCZNIKI KRAŃCOWE / LIMIT SWITCHES	2
010	PŁYTKA ŚCIERALNA / WEAR PLATE	2
011	SPRĘŻYNA GAZOWA / NITROGEN CYLINDER	2
012	ZDERZAK / BUMP STOP	4
013	CZUJNIK BEZPIECZEŃSTWA / SECURITY SENSOR	1*OPCJA / OPTION
014	PŁYTKA ŚCIERALNA / WEAR PLATE	2
015	PŁYTKA ŚCIERALNA / WEAR PLATE	1
016	WPUST / KEY	2
017	PŁYTKA ŚCIERALNA / WEAR PLATE	4
018	WPUST / KEY	4
019	PŁYTKA ŚCIERALNA / WEAR PLATE	2
020	WYŁĄCZNIKI KRAŃCOWE / LIMIT SWITCHES	1
021	KLIN / WEDGE	1
022	KLIN / WEDGE	1
023	PŁYTKA ŚCIERALNA / WEAR PLATE	1

Suwaki GSB



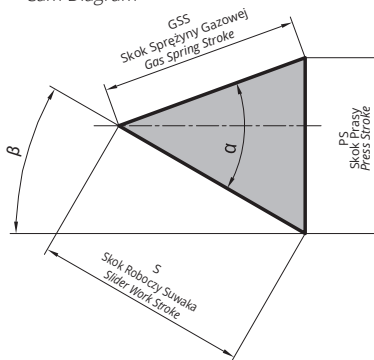
"X" WIDOK / VIEW



Symbol: Catalog No:	$\beta$	A	B	C	D	E	F	G	H	I	J	K	L	M	N	O	P	Q
K802-06-500.00	0°	403	75	130	396	266	185	408	340	190	438	205	365	83	209.5	415	110	180
K802-06-500.05	5°	410.89	94.3	130	398	268	185	408	340	190	438	205	365	83	220	415	110	180
K802-06-500.10	10°	418.81	99.28	130	384	254	185	408	340	190	438	205	365	83	230.5	415	110	180
K802-06-500.15	15°	426.7	104.96	130	385	255	185	408	340	190	438	205	365	83	241	415	110	180
K802-06-500.20	20°	434.51	111.32	130	376	246	185	408	340	190	438	205	365	83	251.5	415	110	180
K802-06-500.25	25°	417.16	118.36	80	339	259	145	408	340	190	438	175	365	83	237	415	110	210
K802-06-500.30	30°	424.16	131.06	80	330	250	145	408	340	190	438	175	365	83	247.5	415	170	210
K802-06-500.35	35°	427.78	150.13	80	317	237	145	408	340	190	438	175	365	83	256.5	415	110	210
K802-06-500.40	40°	438.66	158.34	80	312	232	145	408	340	190	438	175	365	83	265.5	415	110	210
K802-06-500.45	45°	395.15	172.88	30	255	225	145	408	340	190	438	175	401	103	224.5	455	110	230
K802-06-500.50	50°	412.72	188.31	30	245	215	145	408	340	190	438	175	401	100.5	233.5	450	110	230
K802-06-500.55	55°	423.22	212.08	30	256	226	145	408	340	190	438	175	401	100.5	241	450	110	230
K802-06-500.60	60°	433.59	232.11	30	258	228	145	408	340	190	438	175	401	100.5	248.5	450	110	230
K802-06-500.65	65°	434.62	242.64	0	245	245	140	500	463	463	500	175	401	100.5	248.5	450	110	230
K802-06-500.70	70°	429.87	254.52	0	219	219	125	500	463	463	500	175	401	100.5	248.5	450	110	230
K802-06-500.75	75°	418.49	262.53	0	208	208	105	500	463	463	500	160	401	100.5	233.5	450	110	230

$\alpha$	GSS	S	PS
50°	58,00	37,28	44,43
		41,17	44,60
41,64		48,24	
55°		46,00	49,19
		50,56	50,56
60°		52,42	55,42
		58,00	58,00
65°		61,32	64,17
		68,62	68,62
70°		74,34	77,08
	84,79	84,79	
75°	95,02	97,67	
	112,05	112,05	
80°	45,00	102,85	104,86
		127,09	131,07
85°	30,00	114,15	115,47

Schemat Suwaka  
Cam Diagram



Sprężyna Spring	$\theta$	Ilość QTY	Model Model
GS	0-60	2	SC3000-080-E
	65-75		SC3000-063-E

SENSOR Poz No:13

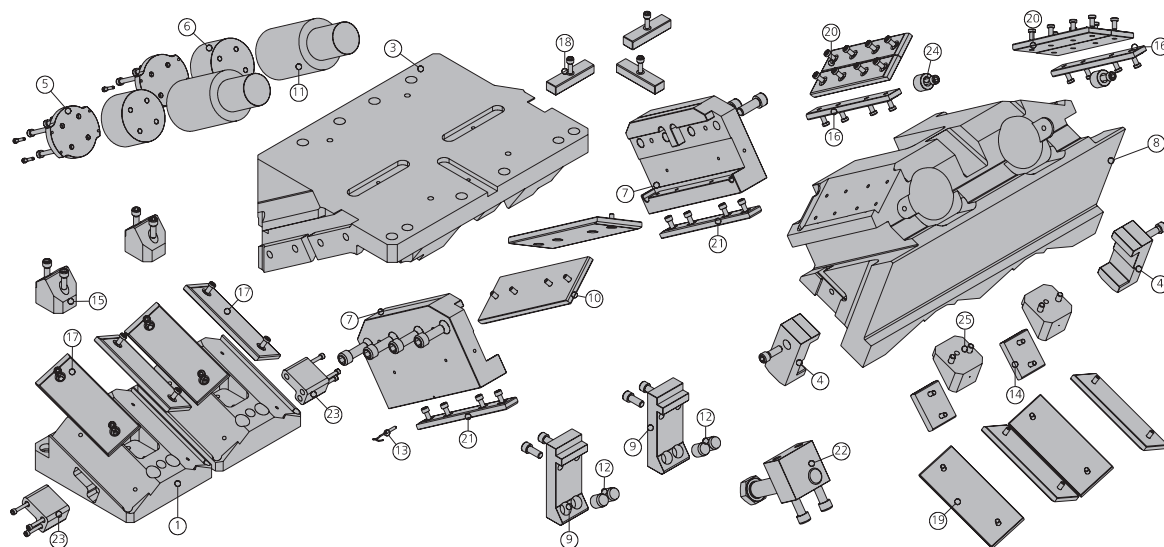


**Przykład Zamówienia:**  
Order Example:  
**W=500,  $\theta$ =25, GS**  
**Symbol: K802-06-500-25-GS    Symbol Opcji (SENSOR): 9003.0002**  
Option Code

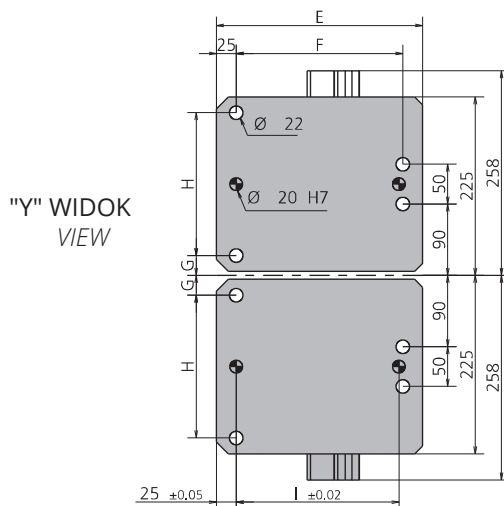
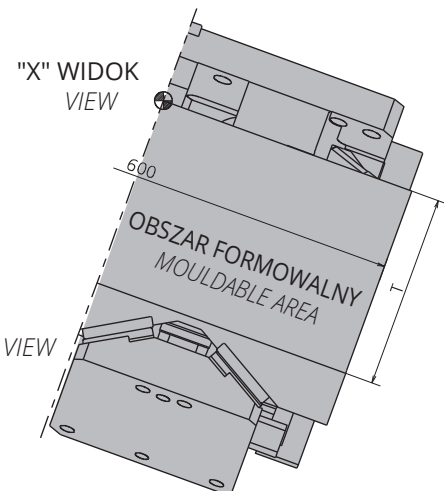
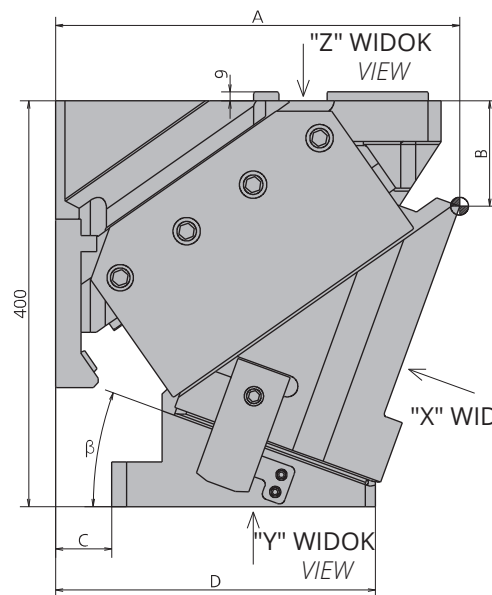
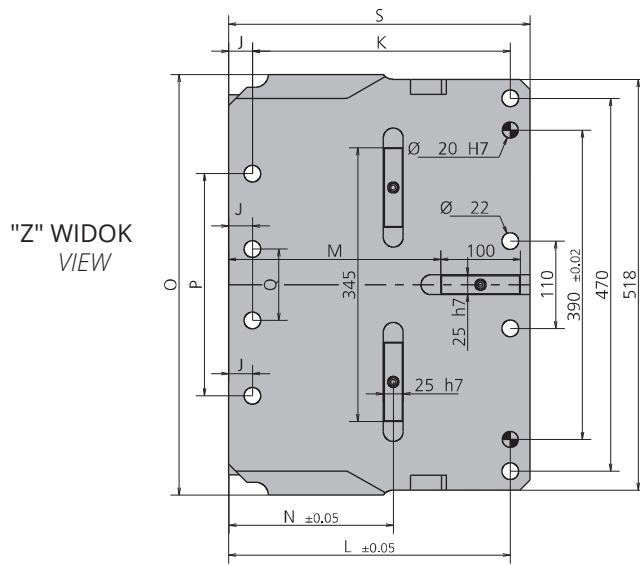
# SUWAKI PODWIESZANE

AERIAL CAM UNITS

# K802-06-600 (00 ~ 75mm)



POZ. POS.	OPIS DESCRIPTION	ILOŚĆ QTY
001	KLIN / WEDGE	2
003	KORPUS SUWAKA / CAM BODY	1
004	MOCOWANIE WSPORNIKA / BRACKET ATTACHMENTS	2
005	PŁYTA / PLATE	2
006	DYSTANS / SPACER	2
007	WSPORNIK / BRACKET	2
008	SUWAK / SLIDER	1
009	WYŁĄCZNIKI KRAŃCOWE / LIMIT SWITCHES	2
010	PŁYTKA ŚCIERALNA / WEAR PLATE	2
011	SPRĘŻYNA GAZOWA / NITROGEN CYLINDER	2
012	ZDERZAK / BUMP STOP	4
013	CZUJNIK BEZPIECZEŃSTWA / SECURITY SENSOR	1*OPCJA / OPTION
014	PŁYTKA ŚCIERALNA / WEAR PLATE	2
015	KLIN / WEDGE	2
016	SPŁYTKA ŚCIERALNA / WEAR PLATE	2
017	PŁYTKA ŚCIERALNA / WEAR PLATE	4
018	WPUST / KEY	3
019	PŁYTKA ŚCIERALNA / WEAR PLATE	4
020	PŁYTKA ŚCIERALNA / WEAR PLATE	4
021	PŁYTKA ŚCIERALNA / WEAR PLATE	2
022	WYŁĄCZNIKI KRAŃCOWE / LIMIT SWITCHES	1
023	WPUST / KEY	2
024	DYSTANS / SPACER	2
025	KLIN / WEDGE	2

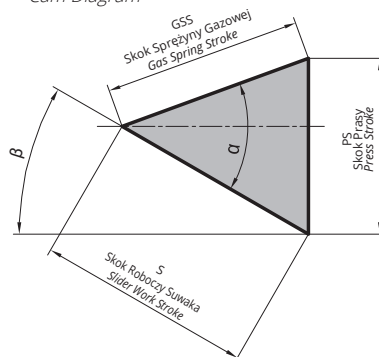




Symbol: Catalog No:	$\beta$	A	B	C	D	E	F	G	H	I	J	K	L	M	N	O	P	Q	R	S	T
K802-06-600.00	0°	368	75	120	375	255	205	25	180	200	30	330	360	272.5	167.5	600	560	250	330	385	200
K802-06-600.05	5°	377.63	89.37	105	363	258	210	25	180	205	30	330	360	272.5	182.5	600	560	250	330	385	200
K802-06-600.10	10°	387.28	99.59	105	350	245	205	25	180	200	30	330	360	272.5	192.5	600	560	250	330	385	220
K802-06-600.15	15°	396.88	110.64	95	340	245	195	25	180	190	30	330	360	272.5	207.5	600	560	250	330	385	220
K802-06-600.20	20°	391.35	122.53	55	315	260	210	25	180	205	30	325	355	267.5	207.5	530	280	90	325	380	220
K802-06-600.25	25°	400.61	135.23	55	305	250	200	25	180	195	30	325	355	267.5	222.5	530	280	90	325	380	230
K802-06-600.30	30°	409.61	138.74	45	295	250	200	25	180	195	30	345	375	287.5	222.5	530	280	90	345	400	230
K802-06-600.35	35°	418.26	153.01	5	285	280	230	25	180	225	30	355	385	302.5	202.5	530	280	90	355	415	250
K802-06-600.40	40°	426.51	168.02	5	280	275	225	25	180	220	30	380	410	322.5	217.5	530	280	90	380	435	250
K802-06-600.45	45°	434.3	183.73	5	270	265	215	25	180	210	30	380	410	322.5	242.5	530	280	90	380	435	250
K802-06-600.50	50°	419.53	180.82	-5	220	225	175	25	180	170	30	400	430	342.5	232.5	530	280	100	400	455	250
K802-06-600.55	55°	427.8	199.87	-5	210	215	165	25	180	160	30	400	430	342.5	247.5	530	280	100	400	455	260
K802-06-600.60	60°	425.24	224.61	-15	200	215	165	25	180	160	30	400	430	342.5	267.5	530	280	100	400	455	260
K802-06-600.65	65°	431.81	244.96	5	190	185	140	35	160	130	55	415	470	382.5	262.5	600	560	250	440	495	260
K802-06-600.70	70°	437.45	270.84	5	185	180	135	35	160	125	55	415	470	382.5	262.5	600	560	250	440	495	260
K802-06-600.75	75°	442.12	292.17	5	180	175	120	35	160	130	55	415	470	382.5	327.5	600	560	250	440	495	260

$\alpha$	GSS	S	PS
50°	58,00	37,28	44,43
		41,17	44,60
55°	58,00	41,64	48,24
		46,00	49,19
60°	58,00	50,56	50,56
		52,42	55,42
65°	58,00	58,00	58,00
		61,32	64,17
70°	58,00	68,62	68,62
		74,34	77,08
75°	58,00	84,79	84,79
		95,02	97,67
80°	45,00	112,05	112,05
		102,85	104,86
85°	30,00	127,09	131,07
		114,15	115,47

Schemat Suwaka  
Cam Diagram



SENSOR Poz No:13



Sprężyna Spring	$\theta$	Ilość QTY	Model Model
GS	0-70	2	SC3000-080-E
	75		SC3000-063-E

**Przykład Zamówienia:**  
Order Example:

W=600,  $\theta$ =25, GS

Symbol: K802-06-600-25-GS

Symbol Opcji (SENSOR): 9003.0002

Option Code