



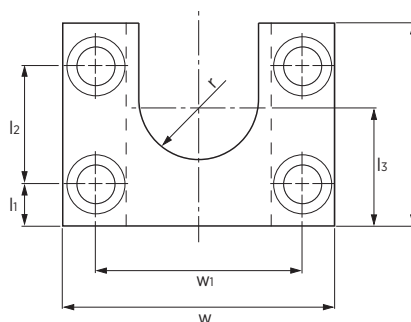
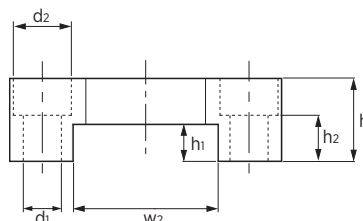
Materiał / Material

CK45

Jak zamówić / How to order

Symbol: M316-01-002

Inne wymiary na żądanie  
Other dimensions on demand



| Symbol      | w   | h  | l   | l1   | l2 | l3 | w1  | w2 | h1 | h2 | d1 | d2 | r  | Śruba<br>Screw |
|-------------|-----|----|-----|------|----|----|-----|----|----|----|----|----|----|----------------|
| M316-01-001 | 80  | 25 | 50  | 11,5 | 27 | 30 | 57  | 38 | 11 | 15 | 11 | 17 | 14 | M10            |
| M316-01-002 | 100 | 32 | 55  | 12,5 | 30 | 35 | 75  | 50 | 15 | 20 | 13 | 20 | 20 | M12            |
| M316-01-003 | 120 | 40 | 65  | 16   | 33 | 45 | 88  | 60 | 20 | 24 | 17 | 26 | 25 | M16            |
| M316-01-004 | 150 | 45 | 100 | 18   | 64 | 64 | 114 | 80 | 20 | 19 | 21 | 33 | 33 | M20            |

Elementy transportowe, mocujące i złączne