

# PŁYTKI PROWADZĄCE SAMOSMARUJĄCE

## SELF-LUBRICATING WEAR PLATES

# PG02

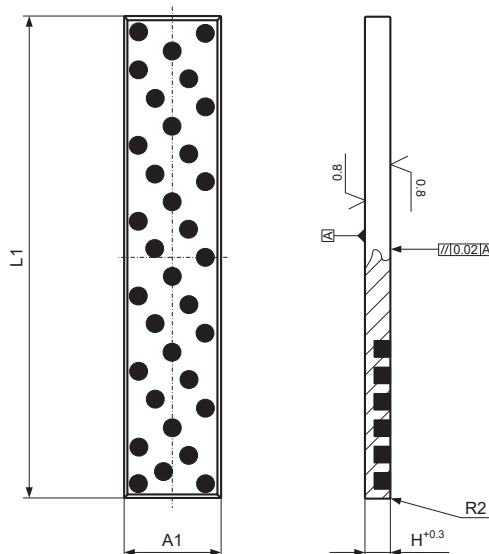
### Materiał / Material

**BRAZ + GRAFIT**  
BRONZE + GRAPHITE  
HB > 190

### Jak zamówić / How to order

Symbol: **PG02.05020.0605**

Inne wymiary na żądanie  
Other dimensions on demand



Symbol	A1	H	L1			
			305	605	1005	
PG02.02004.0305	20	4	X			
PG02.02505.0305	25	5	X			
PG02.03004.0305	30	4	X			
PG02.03006.0305		6	X			
PG02.03006.0605		6		X		
PG02.03008.0305		8	X			
PG02.03008.0605		8		X		
PG02.03010.0305		10	X			
PG02.03010.0605		10		X		
PG02.03010.1005		10			X	
PG02.03012.0305		12	X			
PG02.03012.0605		12		X		
PG02.03012.1005	12			X		
PG02.03510.0305	35	10	X			
PG02.03510.0605		10		X		
PG02.03510.1005		10			X	
PG02.04005.0305		5	X			
PG02.04005.0605		5		X		
PG02.04006.0305		6	X			
PG02.04006.0605		6		X		
PG02.04008.0305		8	X			
PG02.04008.0605		8		X		
PG02.04008.1005		8			X	
PG02.04010.0305	40	10	X			
PG02.04010.0605		10		X		
PG02.04010.1005		10			X	
PG02.04012.0605		12		X		
PG02.04012.1005		12			X	
PG02.04016.0605		16		X		
PG02.04016.1005		16			X	
PG02.05010.0305		50	10	X		
PG02.05010.0605			10		X	
PG02.05010.1005			10			X

Symbol	A1	H	L1		
			305	605	1005
PG02.05012.0605	50	12		X	
PG02.05012.1005		12			X
PG02.05020.0605		20		X	
PG02.05020.1005	20			X	
PG02.06012.0605	60	12		X	
PG02.06012.1005		12			X
PG02.06016.0605		16		X	
PG02.06016.1005		16			X
PG02.08010.0305	80	10	X		
PG02.08010.0605		10		X	
PG02.08010.1005		10			X
PG02.08012.0605		12		X	
PG02.08012.1005		12			X
PG02.08016.0605		16		X	
PG02.08016.1005		16			X
PG02.08020.0605		20		X	
PG02.08020.1005		20			X
PG02.08025.0605		25		X	
PG02.08025.1005	25			X	
PG02.10016.0605	100	16		X	
PG02.10016.1005		16			X
PG02.10020.0605		20		X	
PG02.10020.1005		20			X
PG02.10025.0605	25		X		
PG02.10025.1005	25			X	
PG02.12520.0605	125	20		X	
PG02.12520.1005		20			X
PG02.12525.0605		25		X	
PG02.12525.1005	25			X	
PG02.16025.0605	160	25		X	
PG02.16025.1005		25			X

Elementy prowadzące do tłoczników