

# PLYTKI PROWADZĄCE SAMOSMARUJĄCE

## SELF-LUBRICATING WEAR PLATES

### VDI 3357

# PG06

#### Materiał / Material

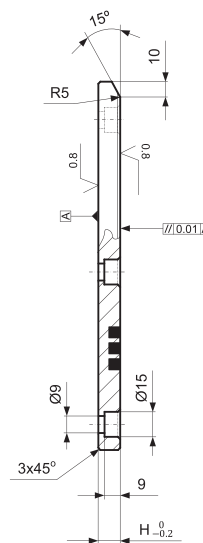
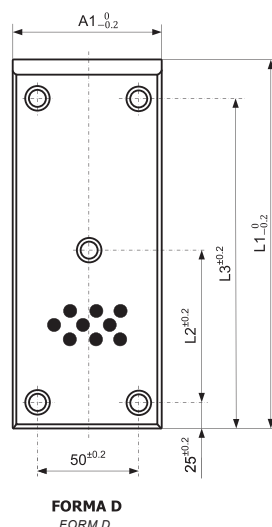
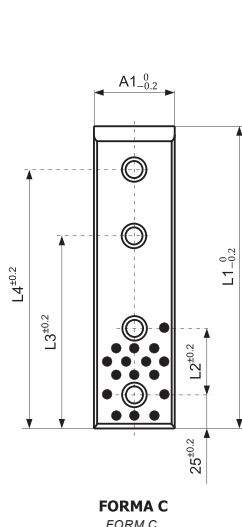
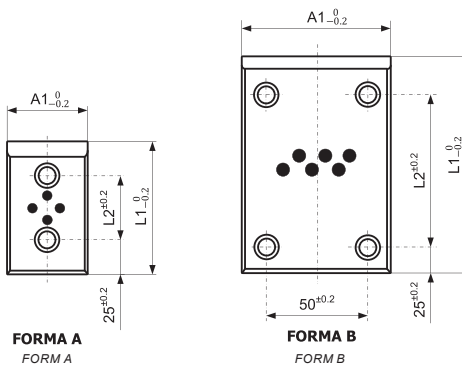
**BRAZ + GRAFIT**  
BRONZE + GRAPHITE  
HB > 190

#### Jak zamówić / How to order

Symbol: **PG06.060125**

Sruby V8 / V12 str. J144  
Screws V8 / V12 page J144

Inne wymiary na życzenie  
Other dimensions on demand



Symbol	A1	H	L1	L2	L3	L4	FORMA FORM
PG06.030080	30	12	80	30	-	-	A
PG06.030100		12	100	50	-	-	A
PG06.030125		12	125	75	-	-	A
PG06.030160		12	160	110	-	-	A
PG06.030200		12	200	150	-	-	A
PG06.040080		40	12	80	30	-	-
PG06.040100	12		100	50	-	-	A
PG06.040125	12		125	75	-	-	A
PG06.040160	12		160	110	-	-	A
PG06.040200	12		200	150	-	-	A
PG06.050080	50		12	80	30	-	-
PG06.050100		12	100	50	-	-	A
PG06.050125		12	125	75	-	-	A
PG06.050160		12	160	110	-	-	A
PG06.050200		12	200	150	-	-	A
PG06.050250		12	250	60	165	225	C
PG06.050300		12	300	80	195	275	C

Symbol	A1	H	L1	L2	L3	L4	FORMA FORM
PG06.050350	50	12	350	100	225	325	C
PG06.050400		12	400	120	255	375	C
PG06.060080	60	12	80	30	-	-	A
PG06.060100		12	100	50	-	-	A
PG06.060125		12	125	75	-	-	A
PG06.060160	80	12	160	110	-	-	A
PG06.060200		12	200	150	-	-	A
PG06.080080		12	80	30	-	-	A
PG06.080100	100	12	100	50	-	-	A
PG06.080125		12	125	75	-	-	A
PG06.080160		12	160	110	-	-	A
PG06.080200		12	200	150	-	-	A
PG06.100125	100	12	125	75	-	-	B
PG06.100160		12	160	110	-	-	B
PG06.100200		12	200	150	-	-	B
PG06.100250		12	250	200	-	-	B
PG06.100300	12	300	125	275	-	-	D

Elementy prowadzące do tloczników

