

# PŁYTKI PROWADZĄCE SAMOSMARUJĄCE

## SELF-LUBRICATING WEAR PLATES

# PG40

### Materiał / Material

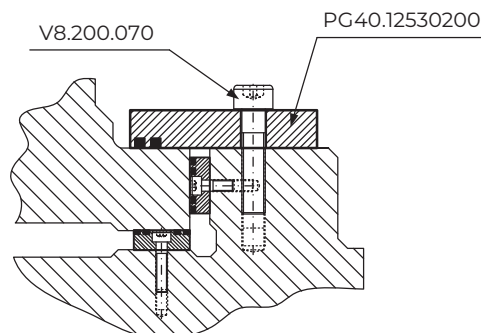
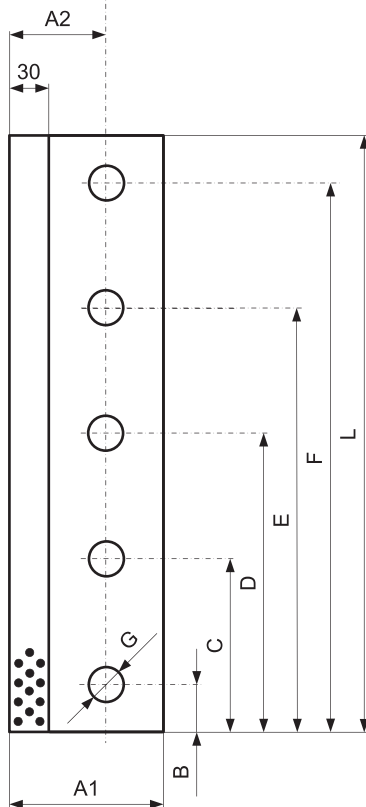
**BRAZ + GRAFIT**  
BRONZE + GRAPHITE  
HB > 190

### Jak zamówić / How to order

Symbol: PG40.12530200

Śruby V8 / V12 str. J144  
Screws V8 / V12 page J144

Inne wymiary na żądanie  
Other dimensions on demand



PRZYKŁAD ZASTOSOWANIA  
APPLICATION EXAMPLE

Symbol	A1	A2	L	H	B	C	D	E	F	G	ŚRUBY SCREWS
PG40.08530160	85	60	160	30	45	-	-	-	115	21	2x M20x70
PG40.08530200		60	200	30	45	-	-	-	155	21	2x M20x70
PG40.08530250		60	250	30	45	-	125	-	205	21	3x M20x70
PG40.08530300		60	300	30	45	-	150	-	255	21	3x M20x70
PG40.08530350		60	350	30	45	-	175	-	305	21	3x M20x70
PG40.08530400		60	400	30	45	125	200	275	355	21	5x M20x70
PG40.12525160	125	75	160	25	45	-	-	-	115	17	2x M16x60
PG40.12525200		75	200	25	45	-	-	-	155	17	2x M16x60
PG40.12525250		75	250	25	45	-	125	-	205	17	3x M16x60
PG40.12525400		75	400	25	45	125	200	275	355	17	5x M16x60
PG40.12530160	125	75	160	30	45	-	-	-	115	21	2x M20x70
PG40.12530200		75	200	30	45	-	-	-	155	21	2x M20x70
PG40.12530250		75	250	30	45	-	125	-	205	21	3x M20x70
PG40.12530300		75	300	30	45	-	150	-	255	21	3x M20x70
PG40.12530350		75	350	30	45	-	175	-	305	21	3x M20x70
PG40.12530400		75	400	30	45	125	200	275	355	21	5x M20x70
PG40.12530450		75	450	30	50	130	225	320	400	21	5x M20x70
PG40.12530500		75	500	30	50	130	250	370	450	21	5x M20x70