

PODKŁADKI SAMOSMARUJĄCE

SELF-LUBRICATING WASHERS

RG

Material / Material

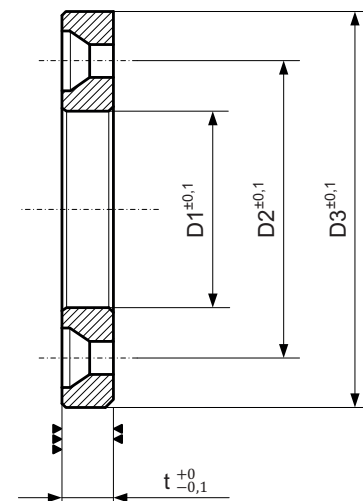
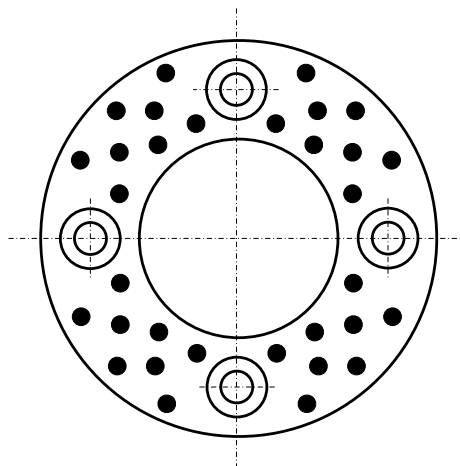
BRAZ + GRAFIT
BRONZE + GRAPHITE
HB > 190

Jak zamówić / How to order

Symbol: **RG.0402.080**

Sruby VS10 str. J146
Screws VS10 page J146

Inne wymiary na żądanie
Other dimensions on demand



| Symbol | D1 | D3 | D2 | t | Śruba Screw | Liczba otworów Nº of holes |
|-------------|-------|-----|------|----|----------------|----------------------------------|
| RG.0102.030 | 10,2 | 30 | - | 3 | - | - |
| RG.0122.040 | 12,2 | 40 | - | 3 | - | - |
| RG.0132.040 | 13,2 | 40 | 28 | 3 | M3 | 2 |
| RG.0162.050 | 16,2 | 50 | 35 | 3 | M3 | 2 |
| RG.0182.050 | 18,2 | 50 | 35 | 3 | M3 | 2 |
| RG.0202.050 | 20,2 | 50 | 35 | 5 | M5 | 2 |
| RG.0252.055 | 25,2 | 55 | 40 | 5 | M5 | 2 |
| RG.0302.060 | 30,2 | 60 | 45 | 5 | M5 | 2 |
| RG.0352.070 | 35,2 | 70 | 50 | 5 | M5 | 2 |
| RG.0402.080 | 40,2 | 80 | 60 | 7 | M6 | 2 |
| RG.0453.090 | 45,3 | 90 | 67,5 | 7 | M6 | 2 |
| RG.0502.100 | 50,2 | 100 | 75 | 8 | M6 | 4 |
| RG.0553.110 | 55,3 | 110 | 85 | 8 | M6 | 4 |
| RG.0603.120 | 60,3 | 120 | 90 | 8 | M8 | 4 |
| RG.0703.130 | 70,3 | 130 | 100 | 10 | M8 | 4 |
| RG.0803.150 | 80,3 | 150 | 120 | 10 | M8 | 4 |
| RG.0905.170 | 90,5 | 170 | 140 | 10 | M10 | 4 |
| RG.1005.190 | 100,5 | 190 | 160 | 10 | M10 | 4 |
| RG.1205.200 | 120,5 | 200 | 175 | 10 | M10 | 4 |

Elementy prowadzące do tioczników