

ŁAPY DOCISKOWE ZĄBKOWANE

TOOTHED CLAMPS

NR 6314Z

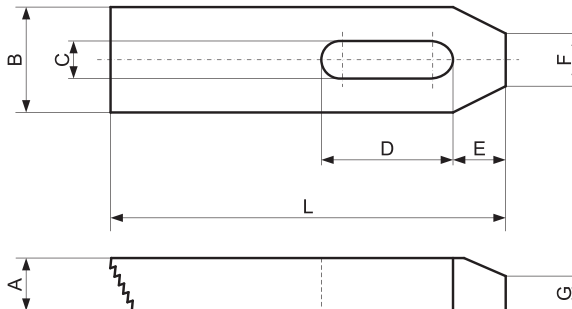
S220

Materiał / Material

Stal hartowana malowana
Hardened painted steel
R > 700N/mm²

Jak zamówić / How to order

Symbol: S220.18125



| Symbol | A | B | L | C | D | E | F | G | Śruba Screw | Waga Weight (g) |
|------------|----|----|-----|----|----|----|----|----|-------------|-----------------|
| S220.07050 | 10 | 20 | 50 | 7 | 20 | 10 | 8 | 6 | 6 | 55 |
| S220.09060 | 12 | 25 | 60 | 9 | 22 | 13 | 10 | 8 | 8 | 125 |
| S220.11080 | 15 | 30 | 80 | 11 | 30 | 15 | 12 | 10 | 10 | 205 |
| S220.14100 | 20 | 40 | 100 | 14 | 40 | 21 | 14 | 12 | 12-14 | 445 |
| S220.18125 | 25 | 50 | 125 | 18 | 45 | 26 | 18 | 15 | 16-18 | 930 |
| S220.22160 | 30 | 60 | 160 | 22 | 60 | 30 | 22 | 18 | 20-22 | 1700 |
| S220.26200 | 30 | 70 | 200 | 26 | 80 | 35 | 26 | 18 | 24 | 2500 |

ŁAPY DOCISKOWE Z REGULOWANĄ ŚRUBĄ PODPOROWĄ

ADJUSTABLE CLAMPS WITH METRIC STANDARD PITCH SCREW

NR 6314V

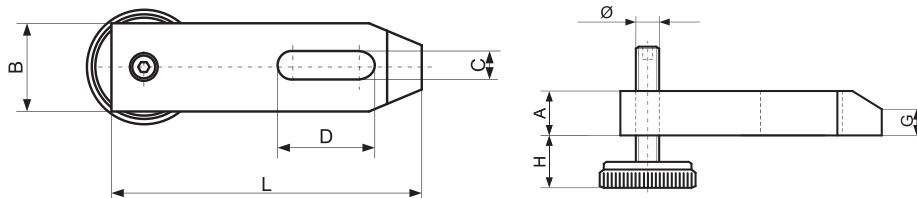
S230

Materiał / Material

Stal hartowana malowana
Hardened painted steel
R > 700N/mm²

Jak zamówić / How to order

Symbol: S230.18125

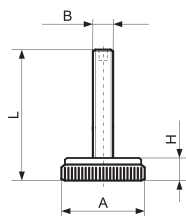


| Symbol | A | B | L | H | C | D | Ø | G | Śruba Screw | Waga Weight (g) |
|------------|----|----|-----|-------|----|----|-----|----|-------------|-----------------|
| S230.11080 | 15 | 30 | 80 | 15-45 | 11 | 30 | M10 | 10 | 10 | 345 |
| S230.14100 | 20 | 40 | 100 | 15-40 | 14 | 40 | M12 | 12 | 12-14 | 680 |
| S230.18125 | 25 | 50 | 125 | 15-45 | 18 | 45 | M16 | 15 | 16-18 | 1185 |
| S230.22160 | 30 | 60 | 160 | 15-50 | 22 | 60 | M20 | 18 | 20-22 | 2030 |

ŚRUBY DO ŁAP S230 (CZĘŚĆ ZAMIENNA)

SCREWS FOR CLAMPS S230 (SPARE PART)

S231



| Symbol | A | B | L | H | Waga Weight (g) |
|------------|----|-----|----|----|-----------------|
| S231.00010 | 40 | M10 | 60 | 15 | 150 |
| S231.00012 | 45 | M12 | 60 | 15 | 210 |
| S231.00016 | 45 | M16 | 70 | 15 | 245 |
| S231.00020 | 45 | M20 | 80 | 15 | 300 |