

NAKRETKI TEOWE

NUTS FOR T-SLOTS

DIN 508 - UNI 5531

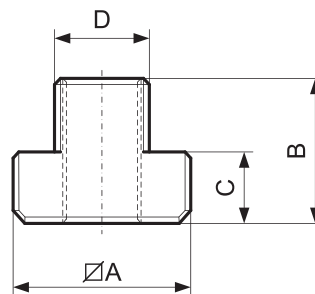
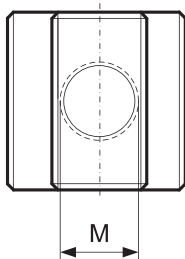
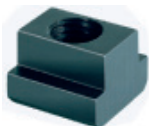
S360

Materiał / Material

Stal hartowana
Tempering steel

Jak zamówić / How to order

Symbol: S360.22028



Symbol	M	D	A	B	C		Waga Weight (g)
S360.06008	6	7,7	13x13	10	6	8	9
S360.08010		9,7	15x15	12	6	10	12
S360.08012		11,7	18x18	14	7	12	22
S360.08014	8	13,7	22x22	16	8	14	41
S360.08016		15,7	25x25	18	9	16	61
S360.08018		17,7	28x28	20	10	18	91
S360.10012		11,7	18x18	14	7	12	20
S360.10014	10	13,7	22x22	16	8	14	37
S360.10016		15,7	25x25	18	9	16	59
S360.10018		17,7	28x28	20	10	18	87
S360.12014	12	13,7	22x22	16	8	14	35
S360.12016		15,7	25x25	18	9	16	56
S360.12018		17,7	28x28	20	10	18	82
S360.14016	14	15,7	25x25	18	9	16	52
S360.14018		17,7	28x28	20	10	18	70
S360.16018	16	17,7	28x28	20	10	18	60

Symbol	M	D	A	B	C		Waga Weight (g)
S360.16020		19,7	32x32	24	12	20	110
S360.16022	16	21,7	35x35	28	14	22	176
S360.16024		23,7	40x40	32	16	24	260
S360.16028		27,7	44x44	36	18	28	383
S360.18020	18	19,7	32x32	24	12	20	100
S360.18022		21,7	35x35	28	14	22	163
S360.20022	20	21,7	35x35	28	14	22	155
S360.20024		23,7	40x40	32	16	24	235
S360.20028		27,7	44x44	36	18	28	355
S360.22024	22	23,7	40x40	32	16	24	220
S360.22028		27,7	44x44	36	18	28	340
S360.24028	24	27,7	44x44	36	18	28	322
S360.24030		29,7	48x48	38	19	30	440
S360.27032	27	31,6	50x50	40	20	32	460
S360.30036	30	35,6	54x54	44	22	36	590
S360.36042	36	41,6	65x65	52	26	42	1010

NAKRETKI TEOWE PÓLPRODUKT

BLANKS T-NUTS

NR 508R

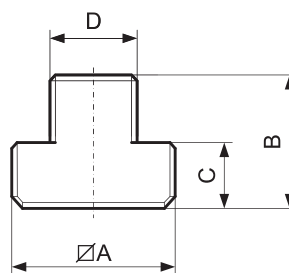
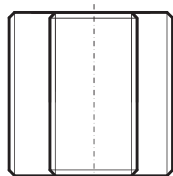
S361

Materiał / Material

Stal hartowana
Tempering steel

Jak zamówić / How to order

Symbol: S361.00020



Symbol	D	A	B	C		Waga Weight (g)
S361.00008	7,7	13X13	10	6	8	10
S361.00010	9,7	15x15	12	6	10	16
S361.00012	11,7	18x18	14	7	12	27
S361.00014	13,7	22x22	16	8	14	50
S361.00016	15,7	25x25	18	9	16	70
S361.00018	17,7	28x28	20	10	18	95
S361.00020	19,7	32x32	24	12	20	150
S361.00022	21,7	35x35	28	14	22	210
S361.00024	23,7	40x40	32	16	24	300
S361.00028	27,7	44x44	36	18	28	430
S361.00032	31,6	50x50	40	20	32	630
S361.00036	35,6	54x54	44	22	36	800
S361.00042	41,6	65x65	52	26	42	1410

Elementy transportowe, mocujące i złączne