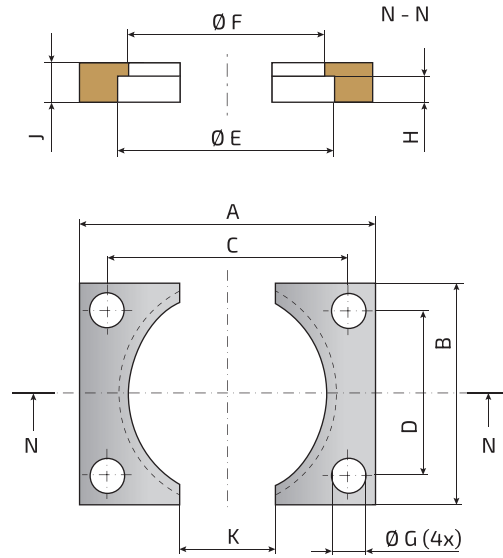


## Mocujące kotnierze półkowe / Fixing half-flanges



Model Model	Zgodne ze Standardami Reference to Standards	Dla modeli... For models...	A mm	B mm	C mm	D mm	Ø E mm	Ø F mm	Ø G mm	H mm	J mm	K mm
SFA 32	-	AGS350, IGS150, TGS700	50	27	40	18	32.5	28.5	6.6	4	7	20
SFA 38	-	AGS500, IGS250, TGS1000	55	33	44	20	38.5	34.5	6.6	4	7	20
SFA 45	-	AGS750, IGS500, LGS500	70	40	57	27	45.5	41.5	9	4	7	25
SFA 50	-	AGS1000, IGS750, TGS2000	75	45	62	32	50.5	44.5	9	8	12	25
SFA 63	-	AGS1500, TGS3000	85	58	69	42	63.5	57.5	11	8	12	30
SFA 75	-	AGS2400, IGS1500, TGS5000	100	70	84	54	75.5	68.5	11	8	12	30
SFA 95	-	AGS4200, IGS3000, TGS8000	120	90	100	70	95.5	88.5	13.5	8	12	40
SFA 120	-	AGS6600, IGS5000, TGS12000	140	115	120	95	120.5	113.5	13.5	8	12	50
SFA 150	-	AGS9500, IGS7500	190	145	165	120	150.5	143.5	17.5	8	12	60
SFA 195	-	AGS20000, IGS10000	210	190	185	165	195.5	188	17.5	8	13	80

### Możliwe mocowania / Fixing possibilities

